



# Eurodelta Vision Catalogue

Next Generation Podium 2021

The Next Generation Podium was a successful first step in engaging people from a variety of sectors in the Eurodelta. The format created awareness and helped to build bridges between research and practice.

By connecting students and young professionals, with vast expertise in the field of planning, the next generation was able to emphasize and showcase their opinions, contribute with their experience and recognise the urgency to work together on the scale of the Eurodelta. This is a fundamental step towards understanding the development of the Eurodelta as a process and not as a product.

## Preface

26<sup>th</sup> September 2021

With the horrific images of water flooding towns and villages in west-Germany, east-Belgium and the southern dutch province of Limburg still sharply imprinted in our collective memory, it has once more become crystal clear that the big challenges of our time do not stop at national borders. Hence, there is simply no way of resolving the underlying problems of climate change, energy transition and healthy as well as sustainable development without cross-border cooperation.

This notion, the necessity as well as the vast potential of cooperation is the starting point of SURE, a network of professionals in the field of urban and rural planning in the Eurodelta megaregion.

However, cooperation is not enough. There is something with the ways we understand these problems. Saying that we are in a stage of transition is saying that systemic, comprehensive changes are evolving. Is saying that we ourselves are part of it. Is saying that we have to come up with radically different approaches and solutions. Is saying that we need all the talent, all the knowledge, all our capacity to innovate and all our power of imagination.

So what better an answer could we put forward but to bring the next generation of planners, designers and engineers together and ask them to generate new ideas for the challenges of the Eurodelta. Look what bright, creative and convincing ideas over a hundred students from all over the Eurodelta have produced in only a few days' time. We need more of this.

Erik Pasveer  
Secretariaat, SURE-Eurodelta Network

## Contents

### Symposium Reflection

(p. 4-5)

### Process of Symposium

(p. 6-9)

### Eurodelta Visions

(p. 10-31)

### Recommendations

(p. 32-37)

### Contributors

(p. 38-39)

# Reflections from the Eurodelta Podium

The Online Symposium Week, 'Next Generation Podium for Eurodelta' explored the future developments for the territory of Eurodelta from the perspectives of the next generation with discussions and insights from eminent speakers. The 5-day conference consisted of three lunch forums and a two-day online symposium, held between 17th – 21st May 2021.

All the presentation videos and discussions from the symposium have been put together. [Check this link](#). You can watch them and send us your ideas if you were not able to attend the symposium. We discussed a lot of urgencies and subjects in detail for the context of the Eurodelta.

The Next Generation Podium for Eurodelta was successfully held as an online symposium in May 2021 from the SURE Network perspective. With a strong consortia of City of Amsterdam, The Hague, Province of South Holland, Deltametropolis Association and Braun-Urban, we offered young students and researchers the stage to express their visions regarding the future of the Strategic Urban Region Eurodelta (SURE). As a result, they developed ideas and strategies to address environmental, technological and infrastructural challenges and presented those publicly with European stakeholders and experts.

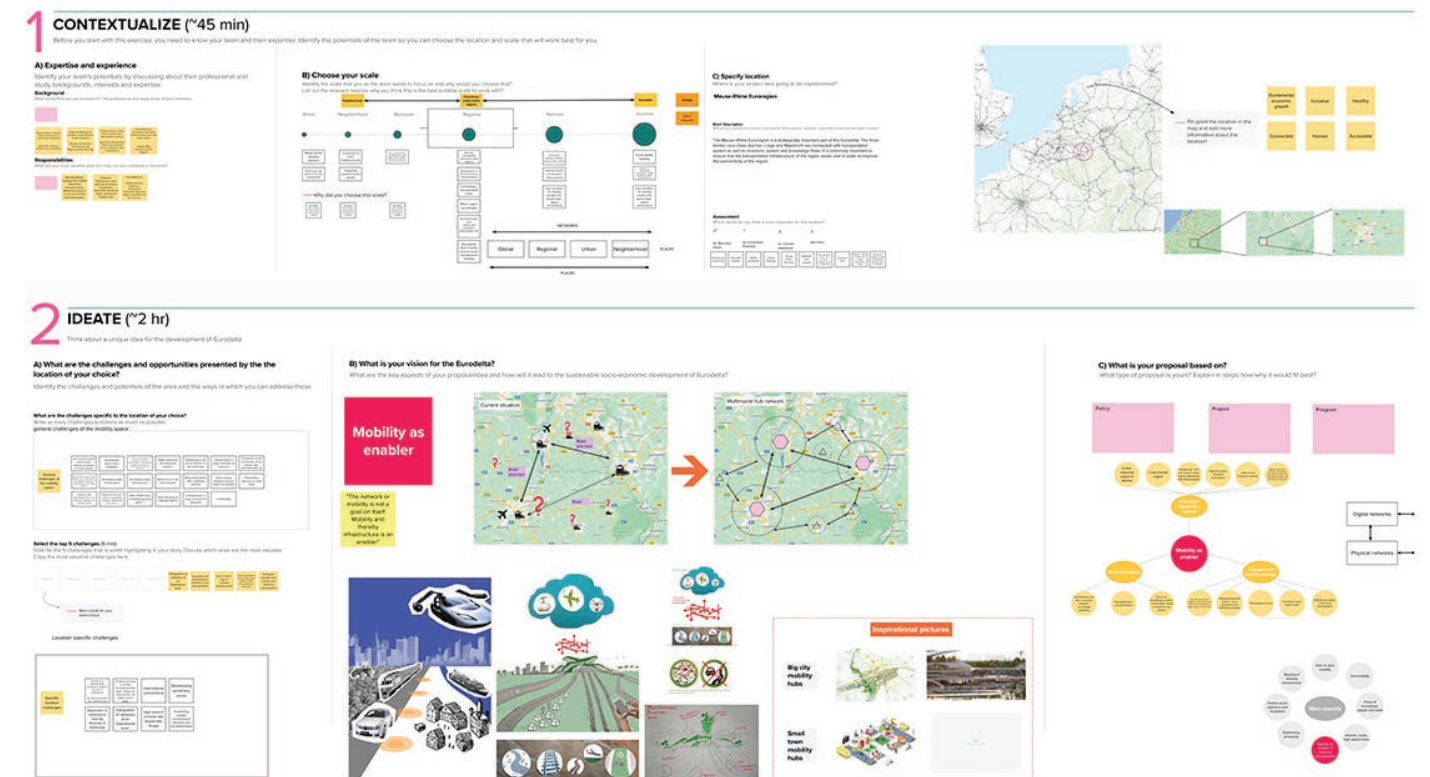
## — Insights from the Symposium

The students and researchers participating in the podium were split into 10 interdisciplinary teams. The teams developed relevant ideas and concepts to be considered and carried out by the SURE Network in the future. Concepts such as the “Rhine Curator”, coherently orchestrate cross-border water-related developments along the main north-south link between Rotterdam and Basel and the “URdelta App”, an idea to launch a digital application with the purpose of informing and engaging people in the design of the Eurodelta.

We envision this discussion from the online symposium towards the development of the **"Eurodelta Knowledge Platform"** for continuous exchange between stakeholders (practitioners from cities, regions and institutions) and students/young professionals from different fields of expertise/practice.

The Podium reflected upon various proposed visions for the territory of the Eurodelta and activities for the SURE Network. It looked at methods to tackle current and upcoming challenges as well as developed strategies to combat climate change, energy transition and enhance economic prosperity, digital transformation and cross-border cooperation (in the field of mobility and infrastructure, water management and resilience, inclusiveness and cohesion, etc.). The teams developed in a short amount of time ad-hoc concepts and strategies leading the Eurodelta towards a dynamic and

innovative cross-border megaregion with knowledge-driven cooperation projects such as; "Co- Triangles" / "Borderless living" in Eindhoven, Liège and Aachen; "Mobility as an Enabler", approach to enhance border traffic between The Netherlands and Germany; "Energy Petals"/"Rhine Maas Energy Landscape", a decentralized energy network from the Port of Rotterdam towards the Rhine Maas Region; "Waste Stock Exchange" across the entire Eurodelta territory and; the "URdelta App", connecting all citizens and enthusiasts to commonly shape and develop the future of the Eurodelta in an inclusive manner.

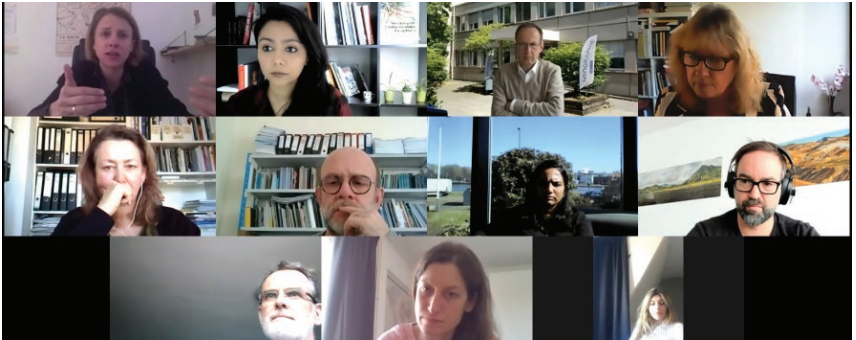




# Process of Symposium

In December 2020, a group of professionals/practitioners within SURE-Eurodelta joined their efforts to foster the involvement of the Next Generation into future activities of the SURE Network. Subsequently, connections were established with over 30 universities and research institutions across Europe, willing to engage in the Next Generation Podium.

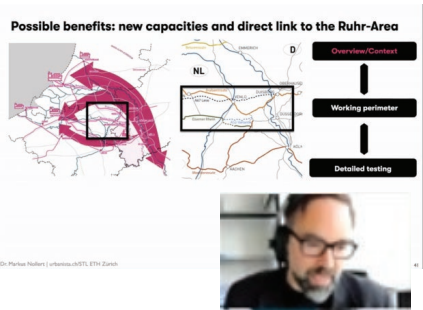
The goal was to organise a symposium where students and young professionals from different academic backgrounds and countries come together to exchange perspectives on the scale of the Eurodelta and develop ideas which may shape the future of the megaregion.



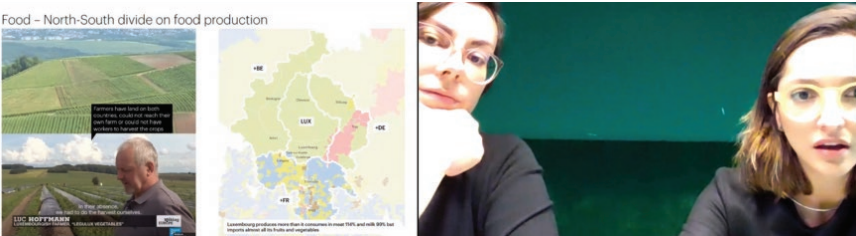
Information meeting and discussions with universities



Information meeting and one on one discussion with speakers



University & Practice presentation by M. Nollert (ETH Zurich/ Urbanista)



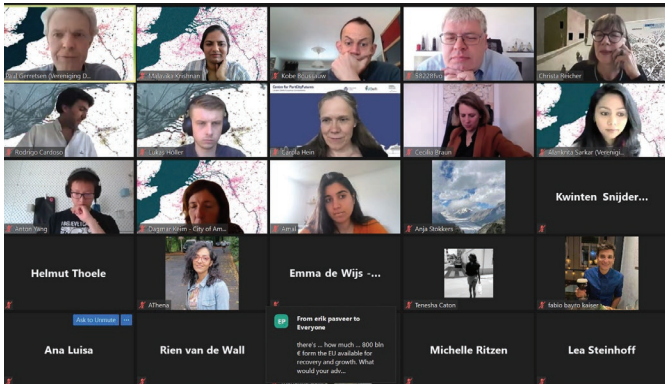
City visions by H. Zarate and K. Knauf (MVRDV) during day 3 of lunch forum



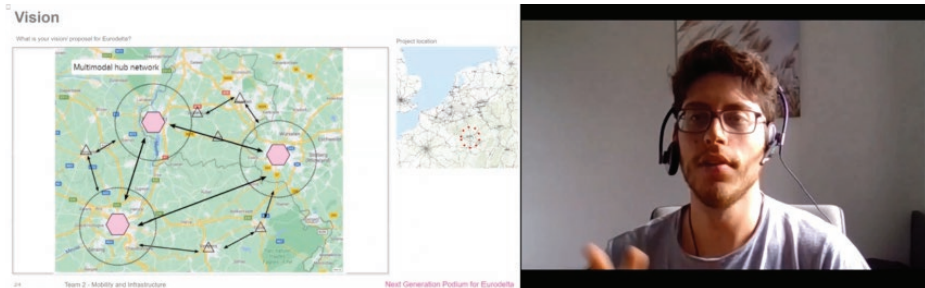
Interview with M. Schaafsma (Board, VDM) by C. Braun (Braun-Urban)



Online Working Conference Day 1



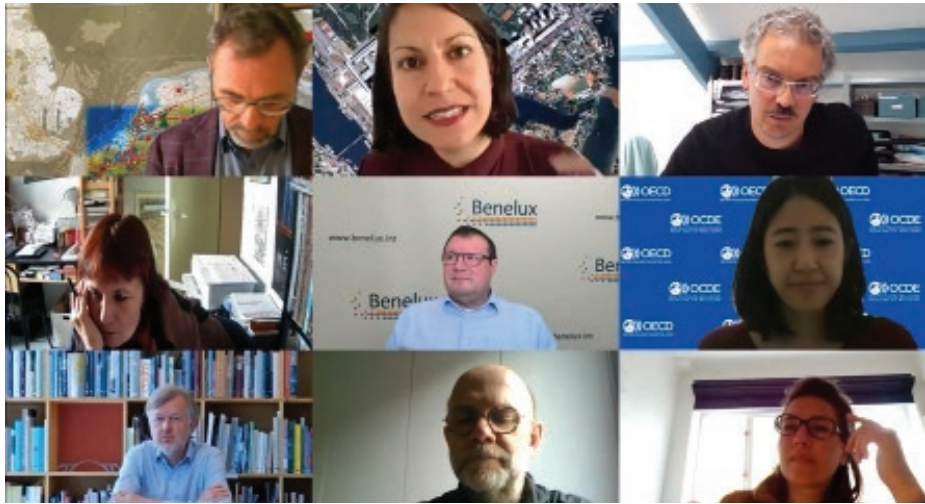
Online Working Conference Day 2



Presentation pitches on visions from participants

With hopefully more Next Generation Podiums taking place in the future, the involvement of different stakeholders, such as third sector organisations as well as public-private partnerships, is needed.

The Next Generation Podium as a format is continuously being developed and shaped according to the needs and expectations of those who actively would like to contribute to the development of the Eurodelta. Become an active part in the process!

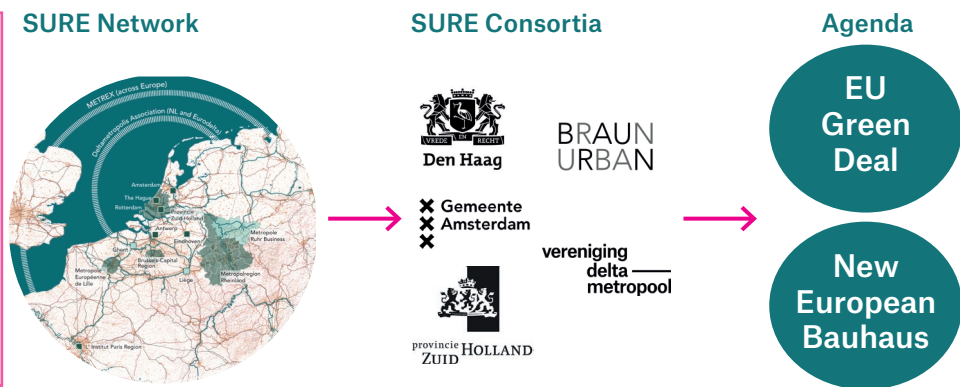


Reflections from jury members on the presentation pitches



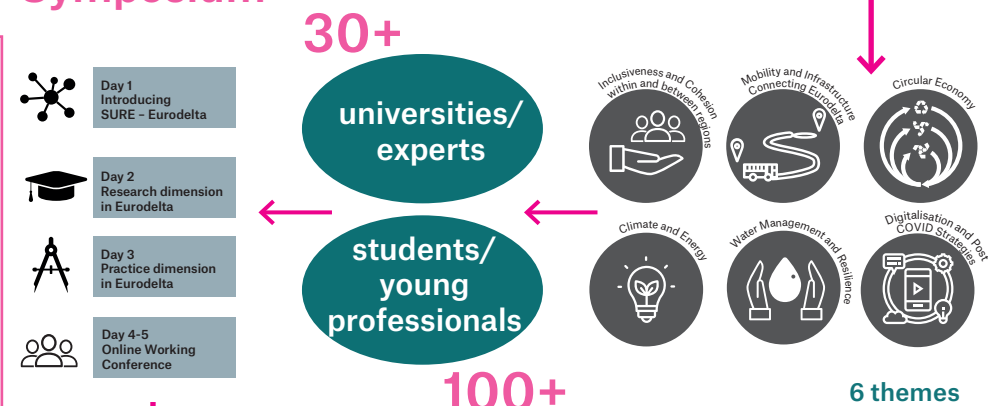
# 1 Pre-symposium

online symposium to create a dialogue between experts practice and academia, from different generations of planners and designers.



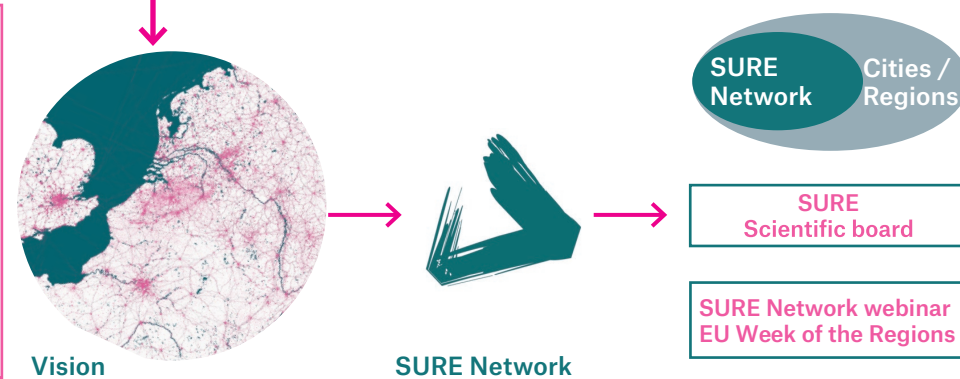
# 2 Symposium

ideate strategies to address environmental, technological and infrastructural challenges together with European stakeholders and experts.

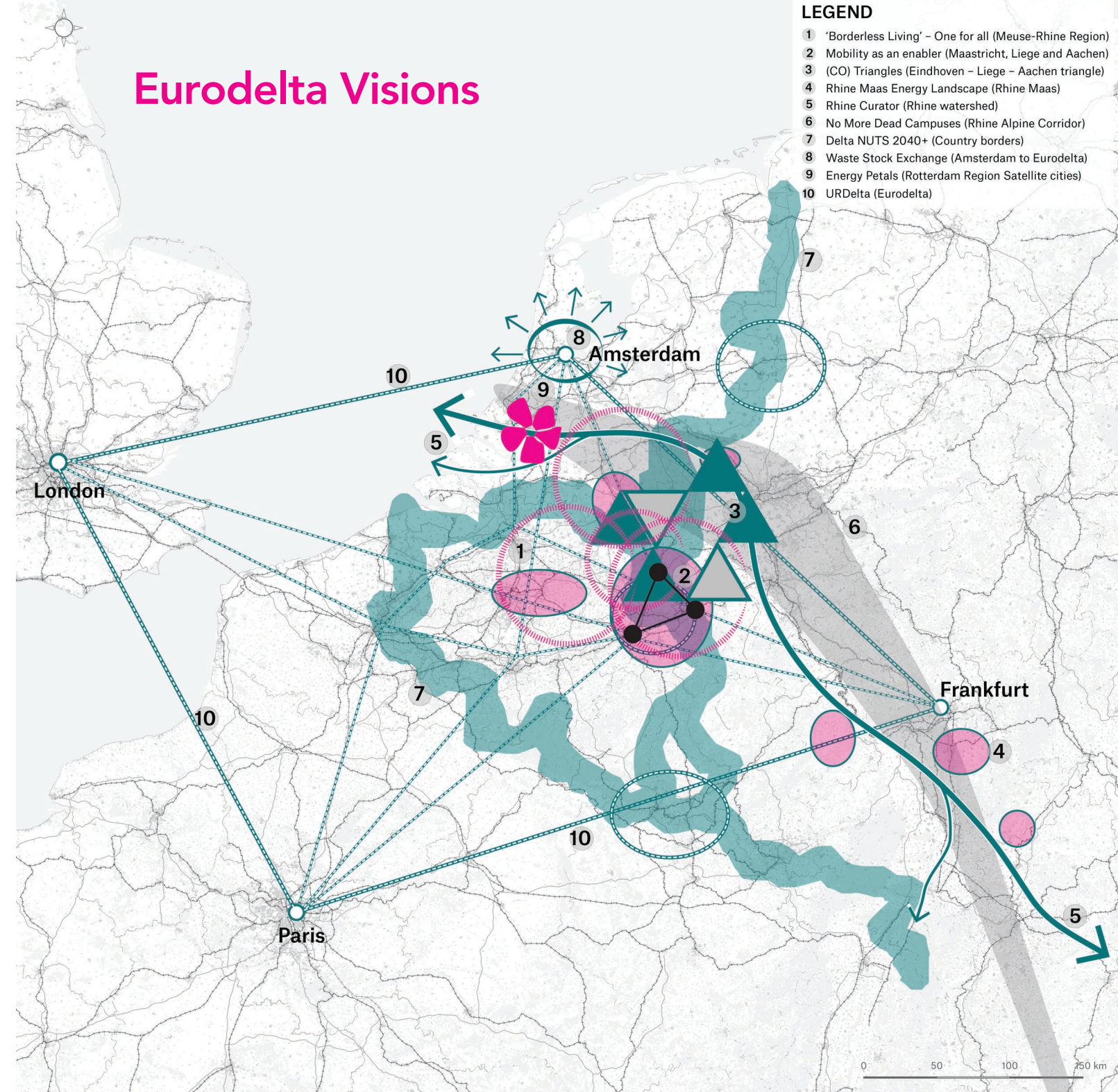


# 3 Next steps

to develop a "sustainable spatial-economic visions for Eurodelta"



## Eurodelta Visions





# Eurodelta visions by Next Generation

Following are some of the visions developed by the participants during the symposium. The participants were divided into ten teams from various universities across the Eurodelta. The teams developed their visions with the assistance from supervisors either from academia or from practice. The visions developed were then presented to the jury and members of SURE Network for reactions. Some of the participants went on to developing the visions in their respective studios as part of their study program. In the following pages, visions from each team are elaborated with images and text from the participants.



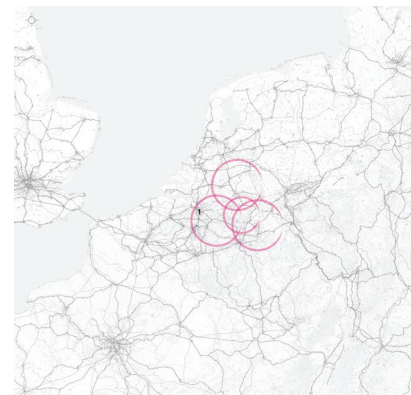


# 1 - One for All

## Meuse-Rhine Euroregion

Ruta Ambewadikar, Ira Kataria, Yujing Ma, Nida Bilgen, Parth Chaudhari, Muhammad Tahir Ali

Supervised by Caroline Newton, Canan Çelik and Arjan Smits



For our topic 'Inclusiveness & Cohesion within and between regions', we chose to work on the Meuse-Rhine region, it's a cross-border region between the Netherlands, Germany and Belgium. So, the challenges we came across with this border region were language barrier, connectivity, and location of opportunities. The main challenge that we found was the **changes in regulations** as we cross the borders from one country to the other. Presently, the inhabitants are not able to access the facilities and services located nearby, but across the borders. '**Borders were prioritised over convenience**'. For example, a hospital (Uniklinik) located in Germany and 1km away from Dutch border. But yet people living in this 1km are not able to benefit.

So, our aim is to create a '**Borderless Living**'. A common ground for people and a region with no boundary. To achieve this, a funding institution working along with a **Digital Application** which will cater and provide a cohesion between these three countries and co-ordinate and make sure the services & facilities are equally distributed between the inhabitants irrespective of the borders.

In the long run, such an institute can then be established for all regions in the Eurodelta.

All team members come from the same background of Architecture and Urban Design. Though living in Germany and Netherlands right now, originally all 6 of us are from nationalities located outside of Europe. So, we get an outsider's perspective on the Eurodelta and for us we already feel that the borders are blurred since a long time between the European member states as compared to other parts of the world like in Asia.



'One for all', vision from team 1

..... and Many More.

## 2 - Mobility as an Enabler

### Maastricht, Liege and Aachen

Ekaterina Plekhanova, Marcelo Matias, Thomas Schram, Tonka Malekovic

Supervised by Manuela Triggianese and Rien van de Wall



Our concept for Eurodelta Mobility and Infrastructure is based on the question - how to maximize connectivity and enable the prosperity of cities as well as their hinterlands, and minimize land/space consumption and CO2 emissions at the same time?

Our approach is based mainly on the railway, muscle-power modes as well as on different electrical modes and smart and shared mobility concepts.

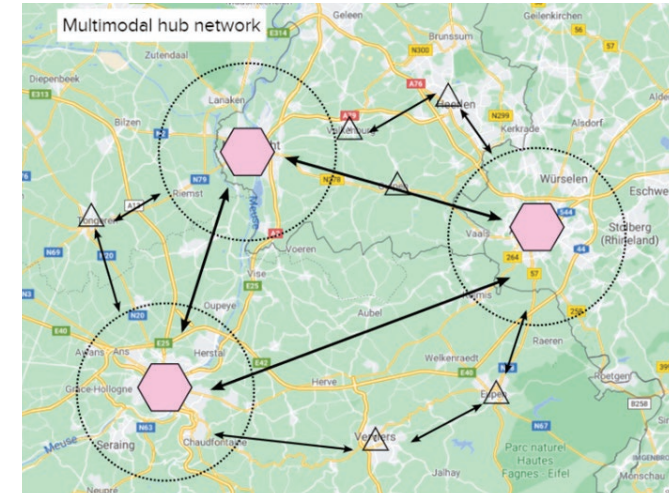
The area in focus is the triangle Aachen-Liege-Maastricht, with their **functional urban areas**. We are using the existing infrastructure and adding missing links while adding new technologies and landmarks. We put a special focus on **multifunctional multimodal hubs** which function as lively places where different modes and concepts of mobility, but also people meet, connect and interact.

The three country border area could function as one **metropolitan area**. By establishing first tier hubs in the cores, the main cities are well

connected. In addition, these core hubs are the access point to the local hubs. This way the periphery of the cities is also included in the greater metropolitan area.

Our goal is to preserve the clean and healthy environment, urban as well as rural, while strengthening the **polycentrism** and thereby enabling an equal and prosperous development in the whole Eurodelta.

The diverse backgrounds in our team were essential to create an overarching territorial strategy which is more than just mobility. We have experts in real estate, urban planning and transport complementing each other. We also had a special presence of an artist with experience in participatory projects that led the translation of the idea to a tangible and visual proposal.



'Mobility as an enabler', vision



'Mobility as an enabler', multimodal hubs





## 3 - (CO) Triangles

### Eindhoven – Liege – Aachen

Madzy Korte, Valeska Götz, Nicoleta Ciobanu, Melike Nur Ülsever, Roberta Cardoso

Supervisors by Marcin Dąbrowski and Ana Luisa Moura

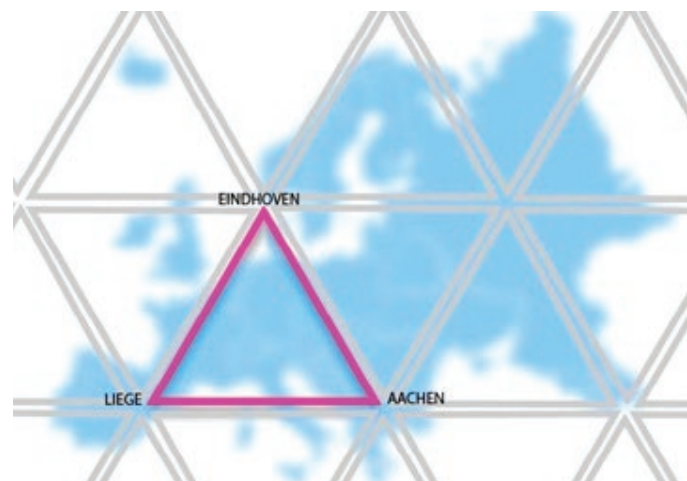


The main issue that is addressed here is to Engage cities of concern in the regional development, innovation, and the research ecosystem, and to increase industrial resilience in a sustainable and circular way.

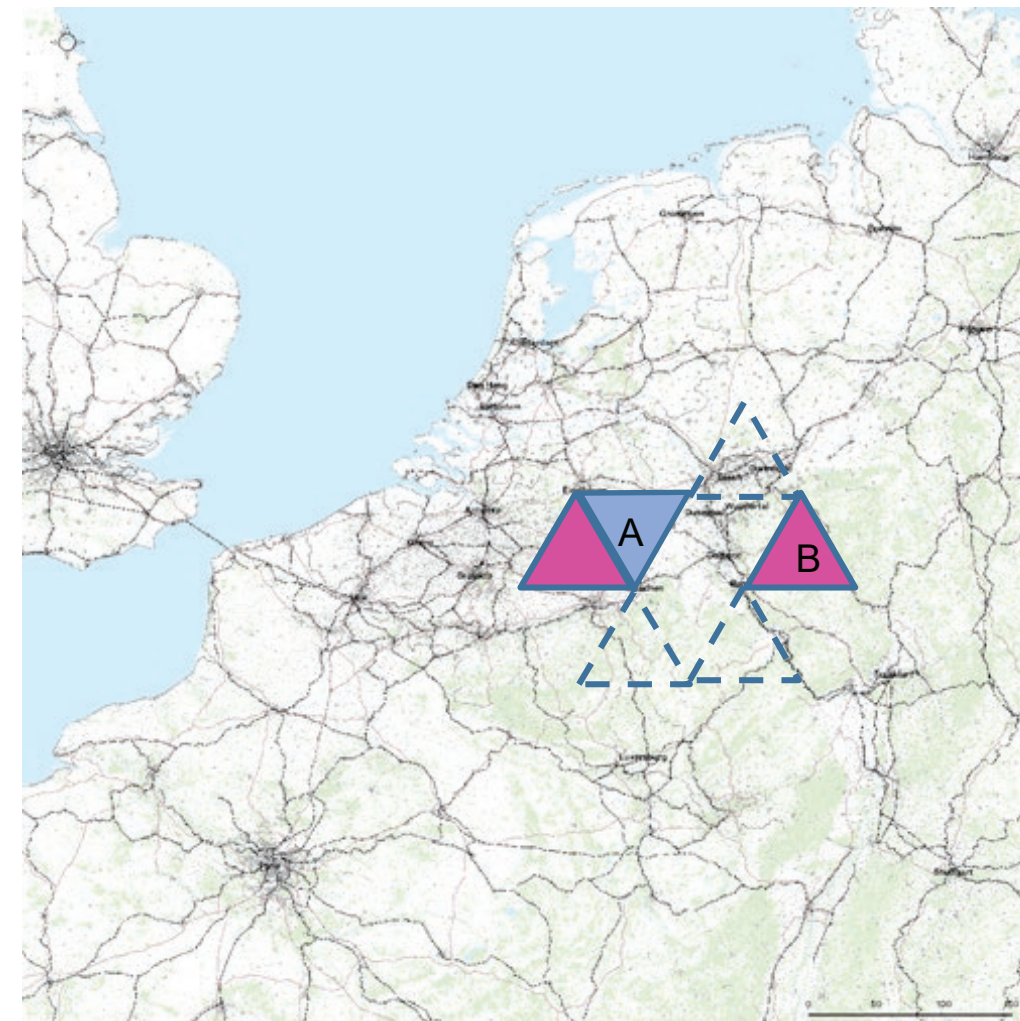
The project aims to establish a **network of complementary hubs** that work together by sharing expertise, knowledge, and know-how. Furthermore, the project aims to establish a pool of patents, intellectual property, and other intellectual assets for **cross-collaboration in areas of interest**: new materials, AI, big data, predicting algorithms, and other cutting-edge technologies.

There is a gap between fundamental research and industry. This project aims to mitigate this gap by creating a **mechanism of circular knowledge transfer process** that validates emerging tools and readapting obsolete tools to the necessity of the new realities of the industry. Each element has its own distinctiveness. Aachen can offer academic power.

Eindhoven will contribute with its existing technology platform. Liege has existing infrastructure that can be repurposed and an industrial park.



'(CO) Triangles', concept and pilot



'(CO) Triangles', vision



## 4 - Rhine Maas Energy Landscape

### Rhine Maas

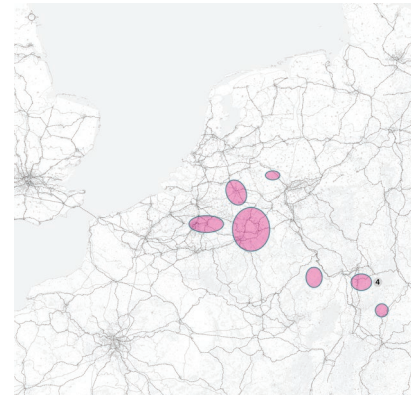
Seher Ulusoy, Marie-Theres Kewitz, Michelle Ritzen, Anton Yan

Supervised by Fabio Bayro Kaiser and Lea Soret

In the project “Rhine-Maas-Energy-Landscape” the main global issues of **climate adaptation/mitigation and sustainable energy systems** are addressed on a regional level. They have the ability to tackle several problems:

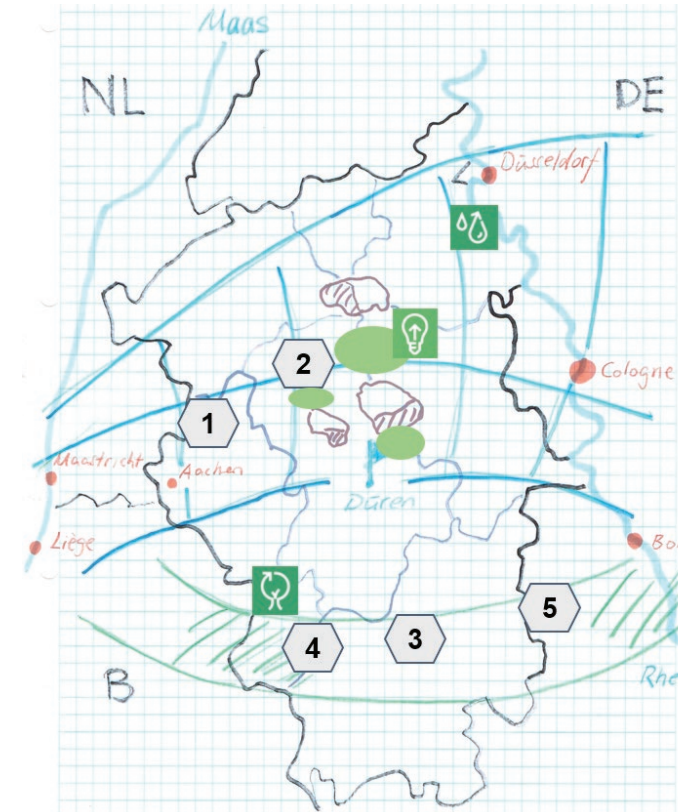
1. Increase of **health damage** due to climate change
2. **Fragmentation** of landscape and settlements
3. Loss of **agriculture soil** and decrease of soil quality
4. **Biodiversity** loss and change of habitats
5. Increase of the frequency and intensity of **floods and droughts**

Using green spaces that have a high potential of carbon storage (such as forests) and renewable energy systems based on water (such as pump systems or hydrogen plants) as a connector, cross-border regions between rivers are developed towards being carbon-free in 2050. Every landscape is based on an ecosystem, and within this new ecosystem it is important to leave no one behind, but to educate former workers in the fossil energy industry sector towards new job

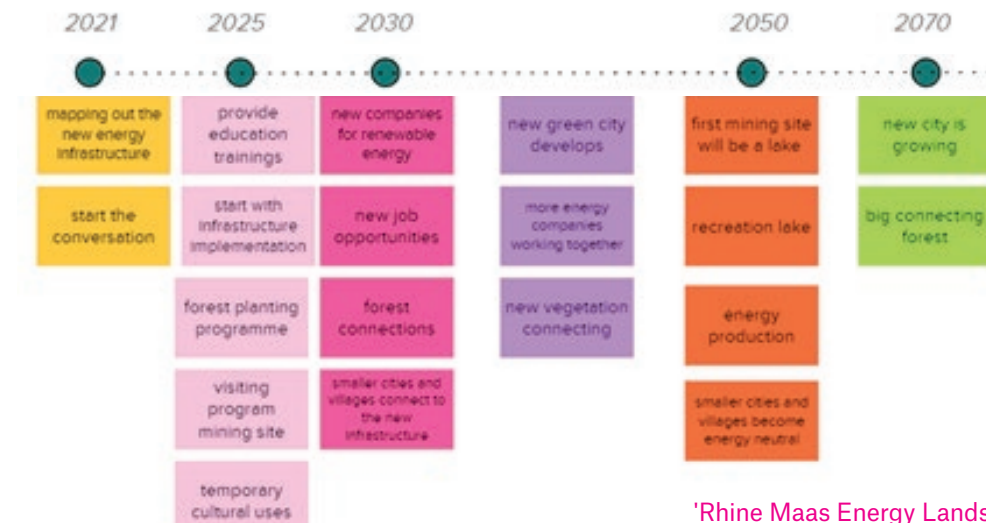


opportunities. Within the **green and blue energy landscape**, this could be in the form of working in new business models that produce climate adaptation/mitigation solutions or in the renewable energy sector. The ‘Rheinische Revier’ is used as a model region, as the region is in the midst of a structural change towards **sustainable land use and new economies**, after a lot of land has been destroyed by lignite mining.

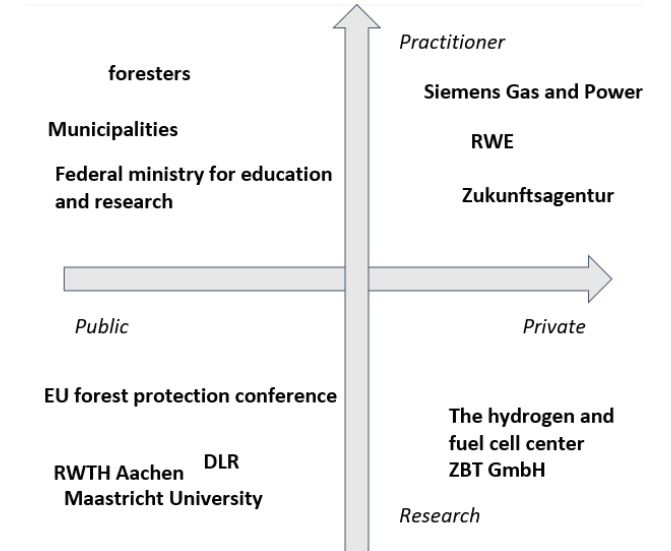
The proposal addresses regions across different borders and independently from the location of big cities. It highlights how fragmentation can be tackled while also working on major European agendas such as the EU Biodiversity Strategy for 2030, European Green Deal (2050) and the Paris Climate Agreement (2050). Backgrounds of the team as urban planners, designers and geomatic engineering have helped to discuss relevance of topics and possible solutions.



‘Rhine Maas Energy Landscape’, vision



‘Rhine Maas Energy Landscape’, phasing



Power vs interest diagram



## 5 - Rhine Curator

## Rhine watershed

Lucasz Bakowski, Rob Naulaers, Rita Ventimiglia

Supervisors: Hendrik Jansen and Malavika Krishnan



## "Rhine Curator - Beyond the administrative borders into the territory of the water"

The Rhine Curator acts as an independent advisory organisation that crosses all administrative borders and works on the scale of the watershed. Based on the idea of the 'BWMSTR' office in Flanders, the organisation acts both as a jury and an instigator for projects that have an impact on the water system. The goal is to help policy makers and spatial planners across scales with understanding their relation to the **wider water system** and work together towards a resilient relation between land and water. By overviewing the **large scale** the curator can help with the **small steps**.

The curator will have accurate stakeholders definition and will have policy functioning mechanisms knowledge with professional background in municipalities. Experience towards the real functioning of water systems, specifically rivers, allowed us to have an effective comprehension of the needs of territory, both anthropic and natural.

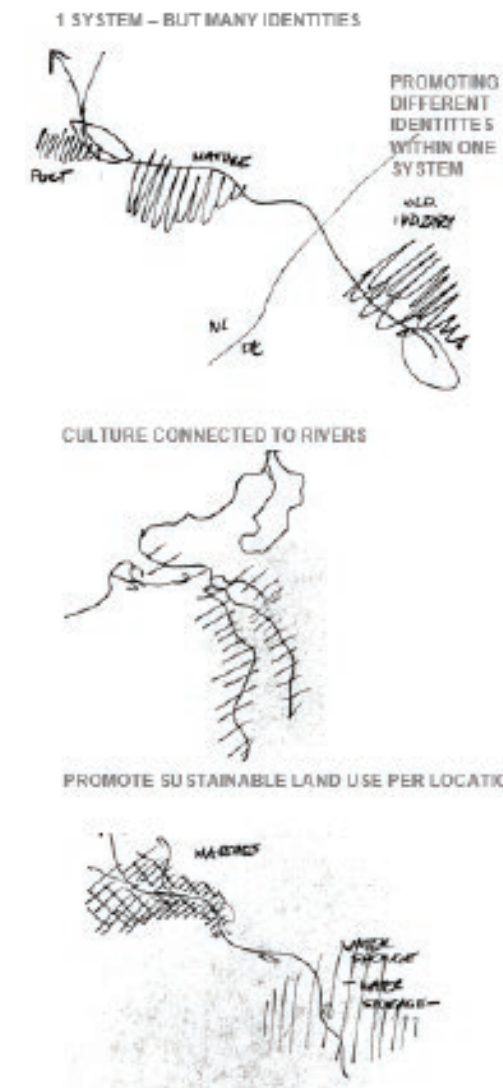
The Rhine Curator can:

- **advocate** a coherent water system together with its complexities
- **promote local identity** and culture linked to the water system
- be a **catalyzer** for a resilient rethinking of the relationship with water

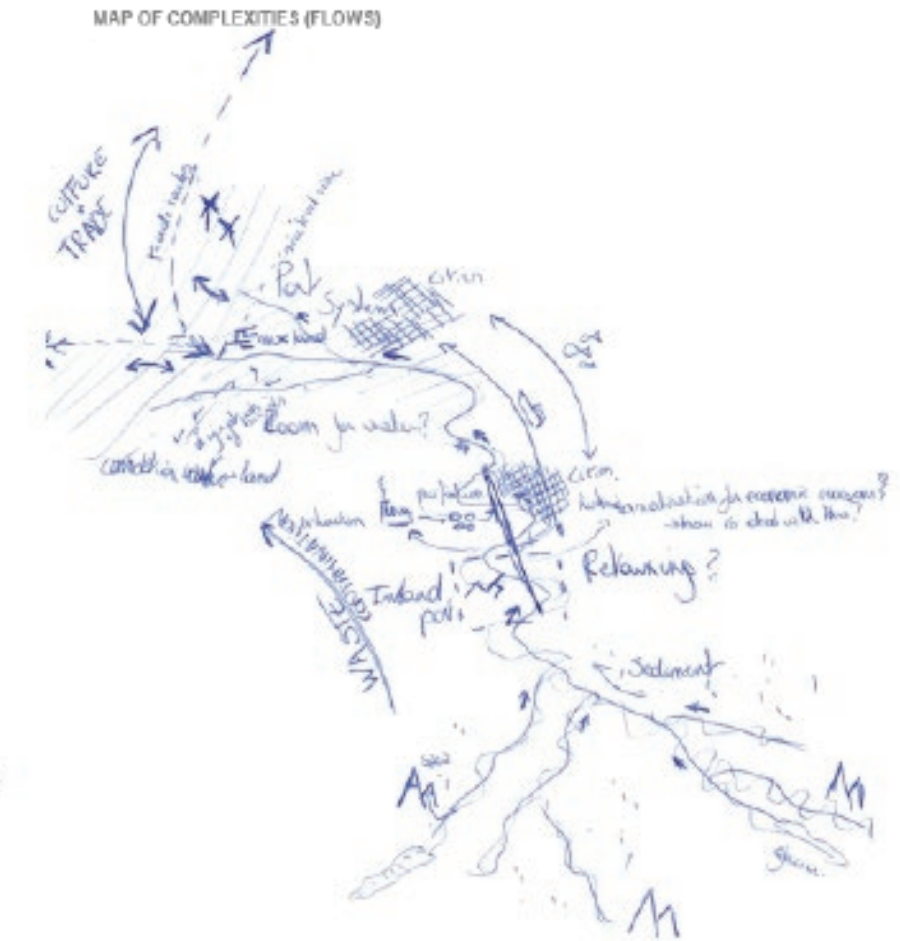
The Rhine Curator role as **independent, cross-boundaries body**, can be multiplied within other regions. Representing the large scale flows, it could become a separate stakeholder on the smaller scale. It could act as a **connector** between scales.



'Rhine Curator',  
interpretation



'Rhine Curator', concept



Example of 'De Biesbosch': local relation with the water depends on the relation with the larger water and sediment system.

# 6 - No More Dead Campuses

## Rhine Alpine Corridor

Amal Al Balushi, Athena Akbari, Nienke Strikwerda, Raghdha Elromy, Gökçe Demiral, Ibtsam Saeed

Supervisors: Hendrik Jansen and Malavika Krishnan

Digitalization and technological advancement have always been a force affecting changes in cities, and the COVID-19 created an unprecedented boom to digital-dependency. Resilient measures and strategies are needed for adaptive planning that better responds to both **local and regional changes**.

As international students, the group addressed the personal challenges experienced within the digital revolution, identifying the 'DEAD CAMPUS' as monofunctional areas that found themselves neglected throughout the pandemic. Contrarily, the Remote working trend brings great potential and opportunity for individuals to experience life in different locations and cultural communities.

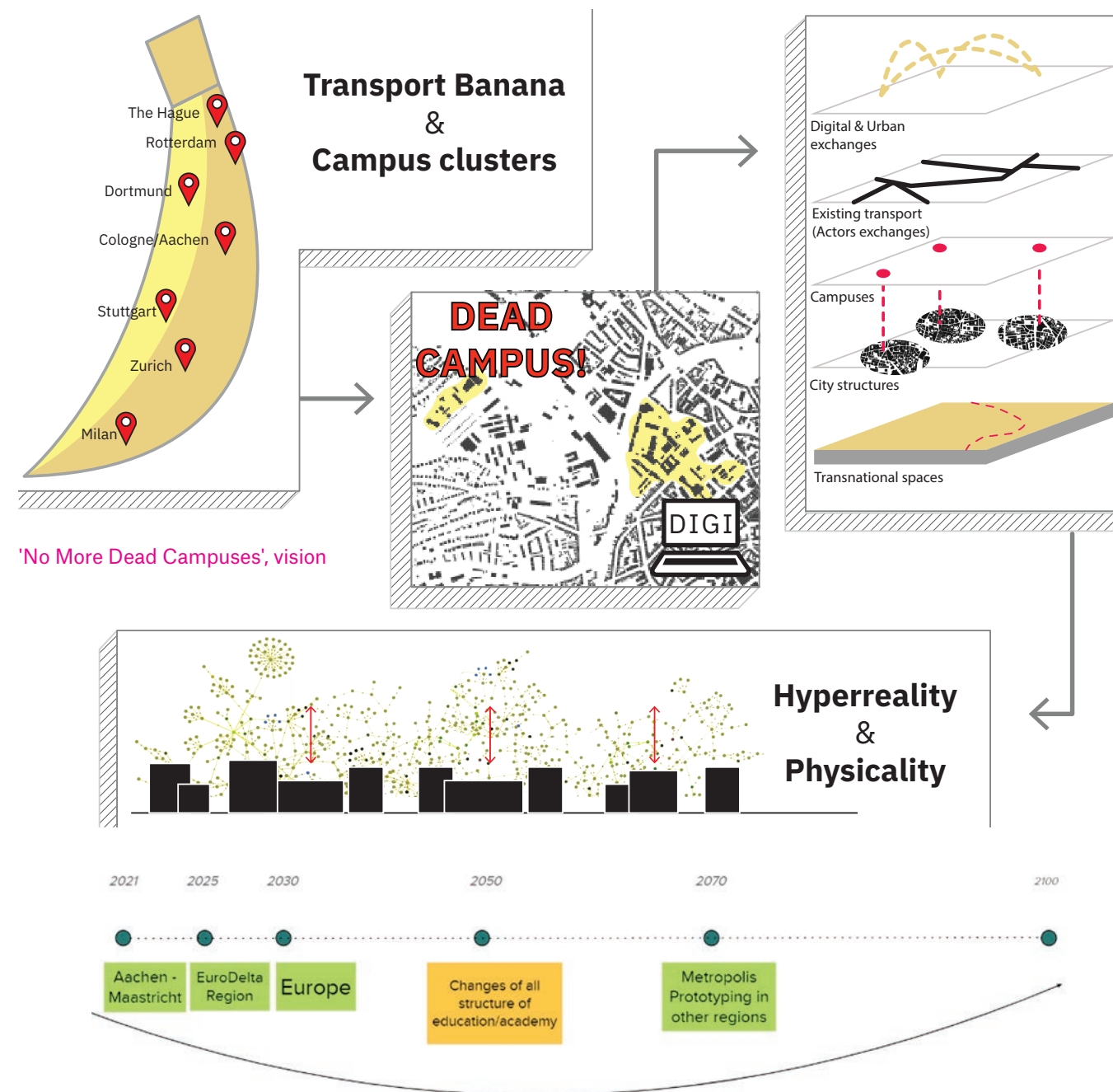
Next, existing opportunities within the Rhine-Alpine delta were analyzed, finding its interconnectivity, campus clusters, and transport routes as potential. We present a concept for an **interface system** that connects the digital and 3D-world; **bringing together digital nomads on university campuses**.



Supporting people's movements through a **myriad of campuses** can help urban retrofitting of these neglected areas, as they would constantly need to evolve to new user needs. These changes in land-use within campuses, (such as neglected offices to dormitories and common rooms, parking lots to urban gardening etc.), can happen on the uni-neighborhood level, and can be upscaled to a regional level as connections between institutions are honed.

Contribution to the development of Eurodelta:  
— **urban retrofitting** for urban neglected areas  
— mutual benefit for the community and digital nomads by investing in **productive activities**  
— effectiveness of existing land uses with **multi-functionality and multi-structure**

The project can be upscaled: Enhance and invest in the Metropolis concept, surrounding Universities' cities







## 7 - DELTA NUTS 2040+

### Eurodelta megaregion

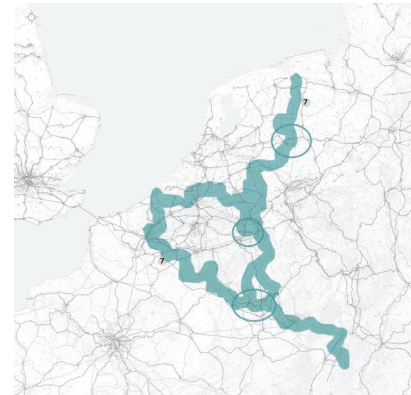
Dominik Kilburger, Maurice Glarmin, Wilko Stornebrink, Nahed Nabhan, Marianne Gatti

Supervised by Tim Holthaus, Kobe Boussauw and Rien van de Wall

#### "A new Territorial Nomenclature for the SURE-Eurodelta - Bringing together physical and formal Interconnectedness"

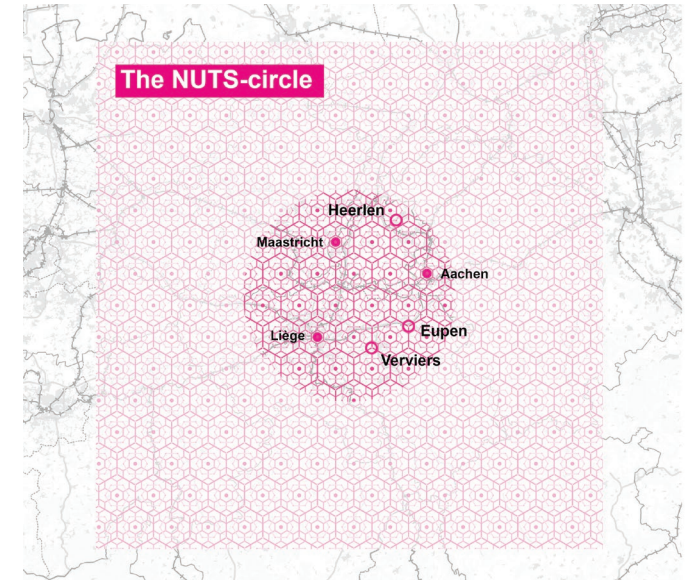
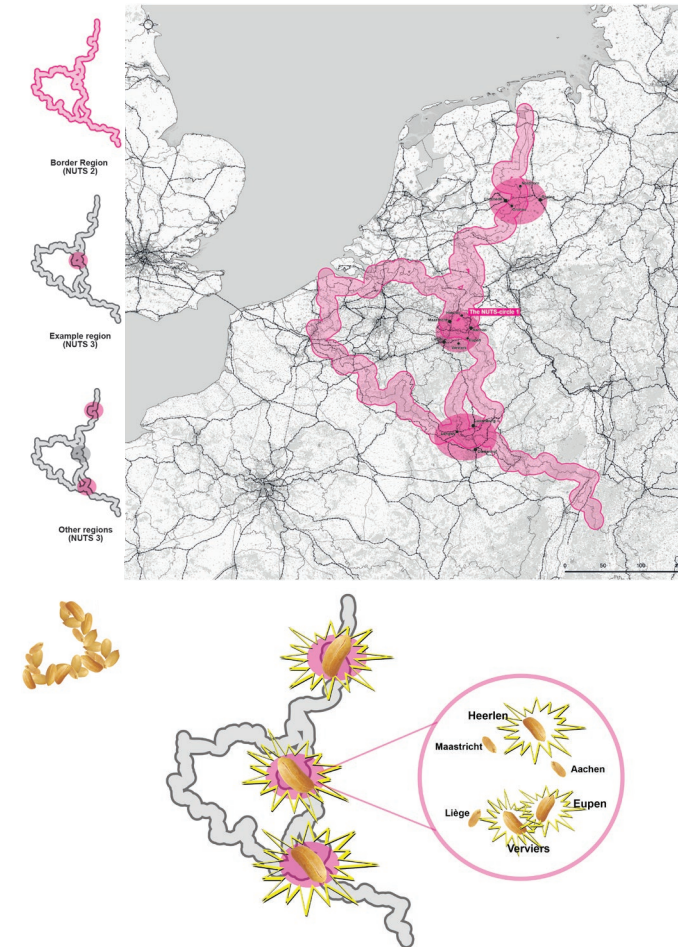
Looking at the Eurodelta region we can see how formally disconnected the physical space is along the national borders. Sufficient cross-border interconnectedness is typically only guaranteed by high-speed transnational infrastructures at peculiar crossing points. However, when zooming in on these border areas, local transport networks, despite existing infrastructures and geographical proximity, act far from **incentivizing public transport as an economic alternative** to motorized individual transport.

Pursuing the overarching goal to make Eurodelta more perceivable as one megaregion (DELTA-NUTS0), the change starts at the micro-level (DELTA-NUTS3) by **revamping local connectedness** alongside national borders and competences. Our approach does not centre a particular mode of transport as every mode (bus, rail, water-bound, shared mobility and new mobility trends) are highly dependent on the local



morphology, topography, culture and political ideology. DELTA NUTS 2040+ rather forms as a stimulant to provide a **transnational territorial policy framework** to facilitate the implementation of any effective mode of transport on a local/regional scale in order to push forward the current undersupply of cross-border projects in the sector of Infrastructure & Mobility without being affected by national issues to find agreements.

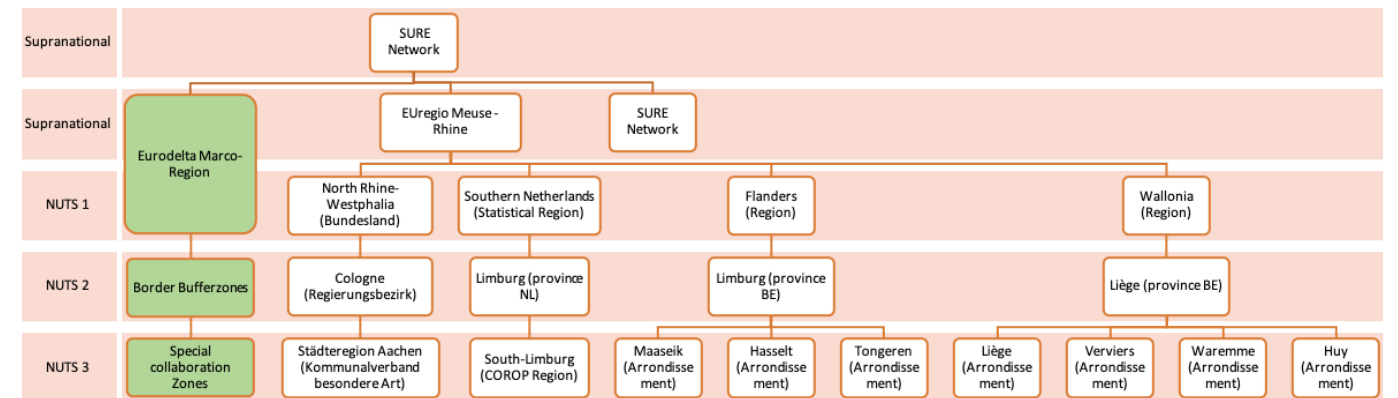
As targeted analysis, we identified specific areas with existing urban and transport networks and, thus, with an urgent need for new offerings in cross-border transportation offers as these areas form as **gateways** for the whole Eurodelta. We labelled these DELTA-NUTS3 regions (e.g. Aachen-Maastricht-Liège) as **Special Collaboration Zones** where our narrative could be formally realized on the short-term and collaboration projects, directly linked to the Eurodelta-Roadmap strategy, are more likely to receive EU-project funding and territorial cohesion.



'DELTA NUTS 2040+', vision and concept

New Potential Cities ○  
Main cities ●  
Cities, Towns, Villages . . .

'DELTA NUTS 2040+', organisational hierarchy





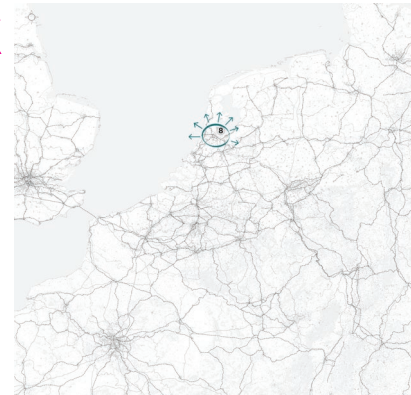


# 8 - Eurodelta Waste Stock Exchange

## Eurodelta megaregion

Alvaro Defalque, Laurin Scheid, Tanja Potezica, Kwinten Snijders Blok, Léa Swier

Supervised by Henning Wilts and Ana Luisa Moura



The Eurodelta waste stock exchange is powered by a cloud of elements for exchanging, transparently and at all scales, reusable building waste materials of the construction/demolition sector. A Co2 calculator to balance the worthiness of the exchange of the reusable materials (is the logistics and transport cost of the material bigger or smaller than the use of new construction materials?). With **geo-referencing** and moment of availability allows for **optimal exchange of the goods**.

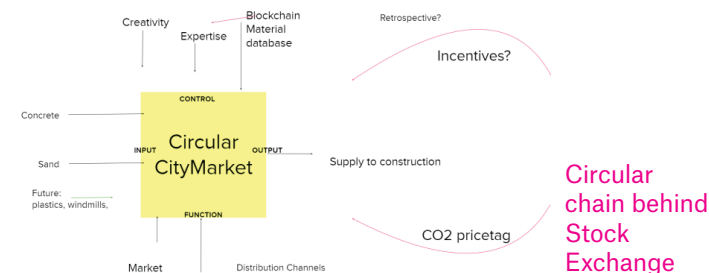
The platform is managed by a network of municipal governments while all interested stakeholders contribute (private sector, citizens, public sector).

In order for initiative to come to light, the **reusable material database collection** needs to (1) be transparently accessible to everyone, (2) be framed like a 'market place' that puts buyers and sellers within the Eurodelta in contact, (3) an **inventorisation** needs to be put in place in a 'pilot city' starting from a newly constructed infrastructure and buildings and develop the database through this inventorisation (Brussels? Amsterdam?), (4) ideally the logistical distribution

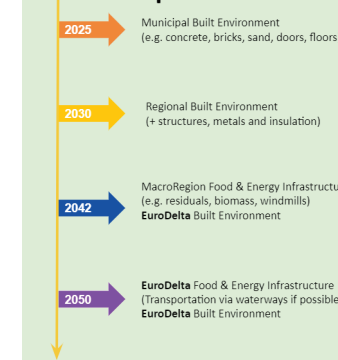
hub of those materials needs to be located in a **strategic location** such as a city harbour (inland waterways), a train station (freight multimodal transport). Crucial in the process is the involvement of research and design institutions to bring forward the **new aesthetics of reuse**.

The added value of our USP aims to boost the (1) **eurodelta identity** feeling, (2) **macro-region economics prospects**, and (3) **both local and EU** ecological targets.

Through the Eurodelta stock exchange, the different neighbourhoods, cities and regions within the Eurodelta are able to find a common ground for circular economy efforts as well as improving trade between the all scales of the mega-region?



## Development



'Eurodelta Waste Stock Exchange', development



'Eurodelta Waste Stock Exchange', scale and timeline



'Eurodelta Waste Stock Exchange', conceptualization



'Eurodelta Waste Stock Exchange', vision





## 9 - Energy Petals

### Meuse-Rhine Euroregion

Julia Pichard, Yanjiao Wang, Mauricio Barriga

Supervised by Carmen Aalbers and Lea Soret

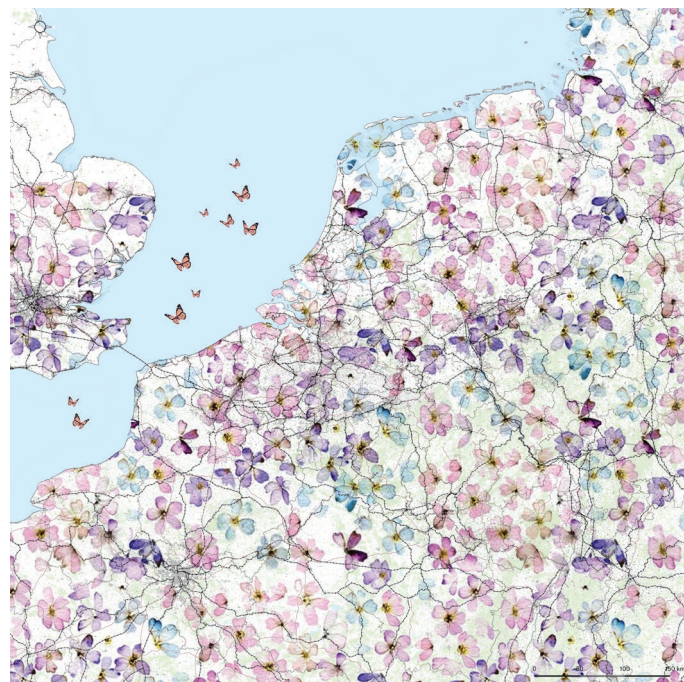
Energy petals is a proposal to show a **relation among cities** from climate mitigation/adaptation and energy generation/distribution perspective.

Cities in the new region provide nutritions to each other in a mutual and balanced way, like these 5 petals in one bulb. Apart from that, the new region consisting of a so-called **core city and satellite** cities could be developed as a whole to address climate change issues and energy distribution while creating additional collaboration and co-design opportunities to reach a **100% renewable energy system** that promotes climate action. We want to help to additionally reduce energy poverty and other social issues created with the energy systems, as well as carefully plan infrastructure to preserve and promote the natural environment.

Leverage a **decentralized energy system** that integrates **collaboration and co-design processes** between partner cities to help satisfy demand but also consider social and environmental dependencies.



Our team includes Landscape Designers, Geographers and Energy professionals as well as Natural resources managers. We make the **energy supply resilient, fair and flexible**.



'Energy petals', concept

**2021** - common vision on energy bulb within these 5 cities



**2025** - define and agree on roles of each city



**2027** - start infrastructure changes - pilot



**2030** - start infrastructure changes for the defined region



**2050** - carbon neutrality in energy production. Full scope of the energy framework completed



**2070** - decentralized model successfully extended the to the Megaregion

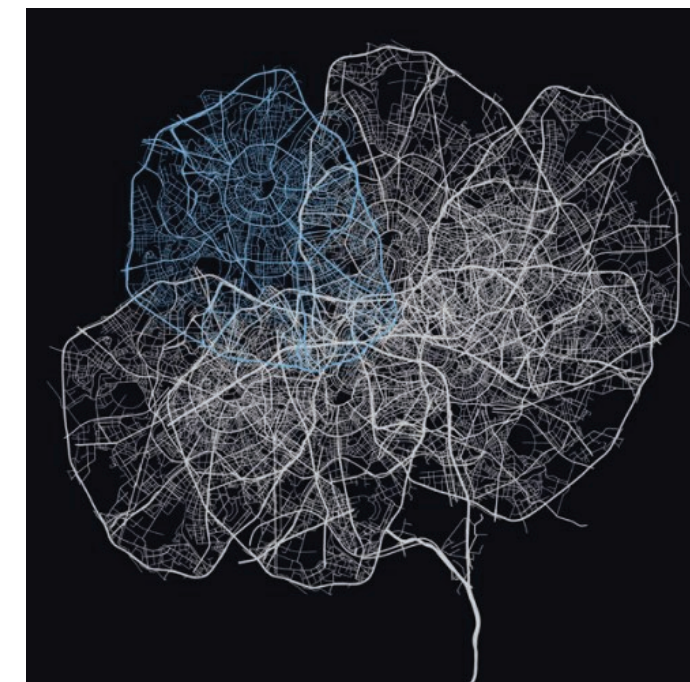


**2100** - decentralized model successfully extended the to the rest of Europe

'Energy petals', timeline and approach



'Energy petals', vision on Eurodelta







# 10 - URDelta

## Eurodelta Megaregion

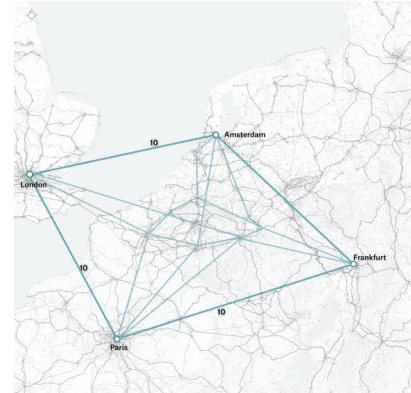
Yasemen Akça, Taif Al-Bassam, Lea Steinhoff, Lisheng Jiang, Sercan Demirpolat

Supervised by Wilbert den Hoed and Malavika Krishnan

### “Together for a healthy and sustainable Eurodelta region! - Be a part of URDelta.app”

Cities are complex, highly sensitive organisms that function through interaction with their inhabitants. As history shows, they are capable of learning and adapting. For example, the physical structure of the built environment has changed as a result of natural disasters or wars. As the current COVID 19-crisis isolates people from each other, it is also affecting cities mentally and shows an increasing awareness and interest of residents in urban issues. Challenges such as health or promoting urban development, inclusion, mobility and infrastructure, economy, climate change and resilience building are moving into the focus of **sustainable urban development**.

The vision is a Eurodelta that responds to all these challenges through the interaction of diverse groups of people and offers future-proof, sustainable and smart solutions. This is made possible by the mobile phone-based URDelta.app, **a digital participation, knowledge and exchange platform for citizens, planners, government**

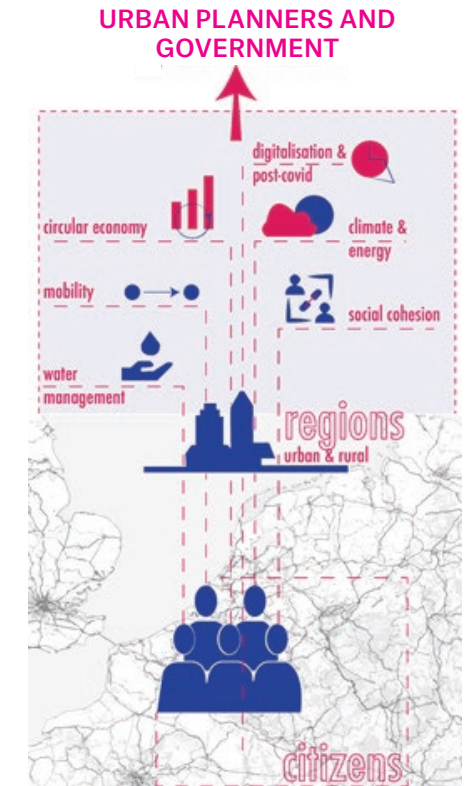


**and other stakeholders.** It contains up-to-date maps and information about existing ideas, visions and plans for the Eurodelta region to solve the aforementioned challenges.

Interested parties can participate digitally in these processes, contribute their own ideas or needs, share their experiences and take part in discussions. **A virtual public space** is created that enables a lively exchange on **urban planning topics** between citizens and experts at any time. In the process, problems and strategies can be discussed and elaborated on all **conceivable scale levels**, thus contributing to the development of the region as a whole. This new, inclusive form of participation increases **acceptance for future planning processes and thus accelerates the development of the Eurodelta** into a sustainable megaregion in all the areas mentioned.



'URDelta', application for smartphones



'URDelta', vision

- 2021 Legality/ Government Permission
- 2025 Using of URDelta.app in the pilot region
- Spreading to the whole Eurodelta region
- 2030 Transformations in Regions, developing voting procedure for plans for cities
- 2050 spreading to other regions in the world
- 2070 Worldwide network
- Becomes a source for history writing
- 2100 The goal is reached; The world is inclusive ,sustainable and healthy

'URDelta', timeline and approach



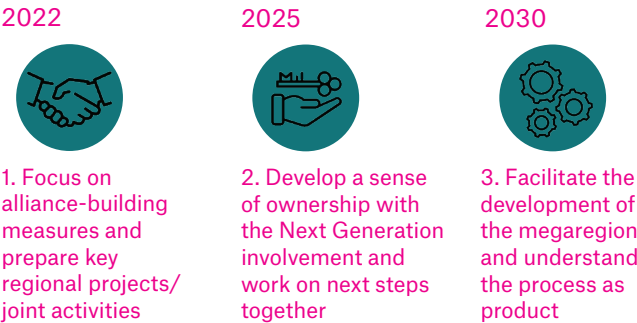
# Recommendations

This is a summary of all the recommendations that has been put forward as the consortia of the first Next Generation Podium for SURE-Eurodelta.

## — SURE Network

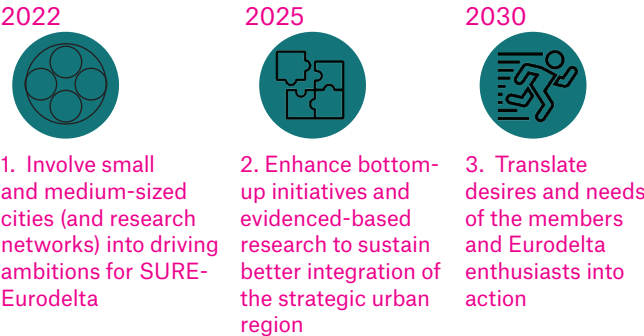
With the Next Generation Podium the SURE Network gains new insights into innovative approaches on how to commonly shape the Eurodelta in the upcoming years and decades. The network primarily exchanges **ideas and best-practices on common challenges and provides foresight** on how we would like to deal with the existing and upcoming societal and environmental challenges. By involving the Next Generation a **sense of ownership** (bottom-up development) is generated which may help to unfold the **underlying values and driving goals** of the way we want to live together in the future. It is up to the SURE Network to leverage the outcomes into strategies and actions which aim to develop **a borderless, balanced, integrated, inclusive as well as sustainable megaregion**. In the course of the development of the megaregion ('process as product'), the results shall be translated into targeted concepts for the **spatial-economic strategy** for the Eurodelta. The idea is to lay the foundation for the **operationalization of key (regional) projects, development programmes** and thereby, foster **cross-border collaboration** on all levels of (co-)operation (local, regional and

transnational). The SURE Network can act here as the **facilitator, connector and incubator** for joint activities by providing the framework and accessing as well as directing EU-funds into key projects for the well-being and integration of the Eurodelta. In other words, focussing on investments which facilitate the development of the megaregion by financing **alliance-building measures** which enhance and accompany the **development process**.



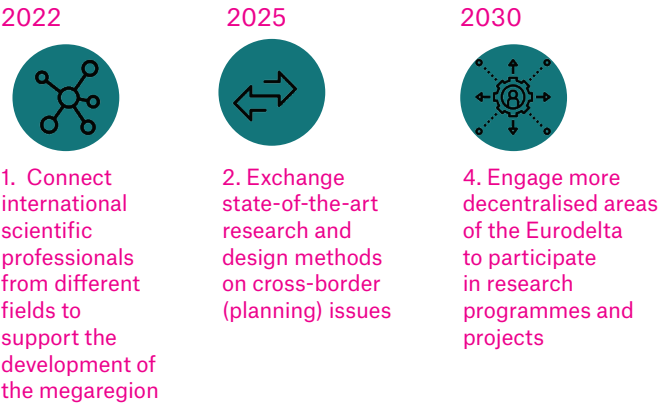
## — Cities and Regions in Eurodelta

The results of the Next Generation Podium provide a first insight into the areas of the Eurodelta which are crucial for **better integration of the strategic urban (mega)region**. For example, in the Rhine-Maas Region, where a so-called “mini-delta” was identified by one of the teams. The mini-delta can be regarded as a inter-linked cross-border region between Aachen (DE), Liège (BE) and Maastricht (NL) and encompasses the challenges and potential which the entire Eurodelta is facing - on a smaller scale. Therefore, involving more small and medium-sized cities (and research networks) from this area into the driving ambitions of the SURE Network on a bigger scale can help to provide the Network with **bottom-up initiatives and evidence-based findings** on what is necessary for a functional urban region (i.e. in the field of education, health care). Cities like Aachen, Liège and Maastricht can play a key role in defining needs and setting standards for **a better cross-border integration of services** (mobility, health care) and regulations (planning, infrastructure). It is important for the network to listen and to act towards the desires and requirements which are addressed by the **“base”**, experienced through day-to-day cohabitation.



## — SURE Scientific Board

With the SURE Scientific Board we intend to establish a group of international scientific professionals from different countries, planning cultures, fields of practice, i.e. planning, urbanism, architecture, design, as well as energy, transport, mobility and circular economy. The aim is to exchange **state-of-the-art research and design methods** as well as best-practices that help to shape the sustainable spatial-economic future of the Eurodelta. By involving universities and research institutes from different countries/ areas within the Eurodelta (i.e. Kick-off exchange with RWTH Aachen, Delft University, Leuven University), the SURE Network intends to foster research and transfer by enriching the curriculum of different study programmes with the dialogue about the scale of Eurodelta. This helps to strengthen the common planning understanding and integration within the territory as a whole. Other universities, based in more decentralized/ peripheral areas of the Eurodelta, shall be able to participate in research programmes and projects to learn about their gain (or loss) in cooperating within the Eurodelta.



## — Eurodelta Knowledge Platform

The Eurodelta Knowledge Platform aims to become an **interactive space** where all kind of Eurodelta enthusiasts are able to express and exchange their ambitions (as well as drawbacks) in the course of the development of the megaregion. It is foreseen as an open-source platform which will be continuously **shaped by its users**; the people living, travelling and working in the Eurodelta. The SURE Network provides the basic facilitation/ organisation/ structure and direction, however, the users/ contributors/ visionaries are frequently asked to reflect and to remediate the course of its development. It contains information and material on **common and cross-border themes, projects and programmes for territorial development**. A blog feature will allow to share content and to provide a voting system in order to **identify projects and arrangements of mutual interest and benefit**. The underlying goal of the platform will be to promote **research and transfer** between universities, practitioners and research networks in the field of spatial planning, urban design, transport and mobility, circular economy, water management and climate adaptation on the scale of the Eurodelta.

2022



1. Promote research and transfer of knowledge and best-practices within the Eurodelta

2025



2. Continuously develop Eurodelta Knowledge Platform with different stakeholders (public and private initiatives)

2030



3. Users can reflect and remediate the course of action in the Eurodelta - online

## — Universities and Students

The idea behind the Eurodelta Knowledge Platform and various other activities steered by the SURE Network and the SURE Scientific Board is to support and facilitate the **engagement of the Next Generation** (young researchers and professionals) in setting and implementing the European goals and agenda. The students, collaborating in **cross-border research projects**, may provide practitioners and decision-makers with **evidence-based findings and strategies** which in turn support the legislative bodies to direct their investments and regulatory measures towards a sustainable and socially-just as well as productive market economy.

2022



1. Foster engagement of the Next Generation

2025



2. Collaborate in EU cross-border research projects on planning issues

2030



3. Strategies based on evidenced-based findings from universities and students

## — Next Generation Podium 2022

Despite a lack of planning reliability due to the Corona pandemic, the SURE Network plans to host a physical/or hybrid event for the second Next Generation Podium for Eurodelta in spring 2022. Just as participation was kept open to all universities and research institutes across the globe in the first round, the upcoming event actively invites everyone to contribute with

innovative ideas to continuously shape the future of the Eurodelta. The key prospect of this event, however, is to provide ideas which **substantiate the visions developed** during the first round in order to **enrich the existing course of action and continuously develop the NextGen editions**. Nevertheless, ideas which turn out to be prone to non-feasibility or new on the agenda may openly be identified, challenged and overruled. In fact this integrative and reappraised approach allows to test ideas and solutions (highlight) in pilot actions and addresses the necessary **flexibility and adaptability** in the course of developing a **dynamic and integrated megaregion**.

2022



1. Apply an integrative and reappraised approach

2025



2. Enrich the existing course of action and continuously develop the NextGen formats, themes and outcomes

2030



3. Test ideas and solutions through pilot projects

## — Network Communication Strategy

The Eurodelta is in need of a coordinated communication strategy which is commonly developed by members of SURE and Eurodelta enthusiasts in cooperation with the creative industries. The idea is to develop a **strong project identity and design strategies** to accompany the ongoing activities and guiding principles of the SURE - Eurodelta Network. Industry cooperation, can activate progress and policy change. The goal is to create attention, spark interest, build desirability and stimulate action in order to engage people and **develop sustainable relationships**.

2022



1. Identify cooperation partners from the creative industries (in NL, BE, GER, FR)

2025



2. Develop project identity and cross-border communication strategy

2030



3. Stimulate action to engage in the development of the Eurodelta

These are a few points of advice towards taking further steps with the members (cities, regions and networks) of SURE Network and about the interaction and communication with potential collaborations. We foresee these recommendations translating into actions in the coming years.



**With the inputs from the consortia, here are some of the reflections and suggestions from the audience and participants from the Next Generation Podium for Eurodelta.**

Sustainable solutions are possible when we set aside disciplinary and geographical boundaries.

Unique experience being able to participate in such a wide range of professionals and students in an in-depth format.

Participants are interested to help the symposium to invite local offices/studios for more practical cases or cooperation opportunities with different stakeholders. This step could make a symposium more like a practical lab, instead of fighting in our brain.

Include more international background oriented researchers and young professionals, so that language could be less obstacle at least.

Despite the 'NextGen' in the title of the symposium- student's contributions with a quite short presentation time came a bit short and at least we in our group thought of few additional considerations regarding the development of the Eurodelta-region.

It was like a brainstorm with people from different fields. Open-minded perspective to view a phenomenon.

Act as a platform to connect policymakers, academics and students, and ideally also communicate its intentions very clearly to a wider society.

A very communicative and, in my eyes, complete forum with an open exchange between (usually busy) experts (both in a personal and in the public chat).

More particular practical perspectives both from the attending planning practitioners and 'special guests', for example environmentalists or a representative from a farmer's organization, implementing planning regulation.

Next time, civil society actors could be brought in to build momentum on what binds the Eurodelta and how cooperation could benefit citizens more.

My takeaway is that there is a shared vision in development for the Eurodelta.

You could give more specific assignments so students develop more specific ideas/ solutions. Now we just had a theme. This allowed for creativity and a wide variety of outcomes but they remained quite superficial.

It helped me to understand Eurodelta Region in general and the concept of the development of Eurodelta with different type of perspectives and aspects. My groupmate and I took the outcome of the group work and developed it to the next level.

It was great to communicate with the experts that are open for different type of ideas. I think more political people could be invited for the next years, because at the end of the process the decision-making chains decided the end solutions.

The symposium was a very informative and inspiring "window" to recent and progressive practices in the realm of territorial transformations. It was my first "real-world" experience in the realm where, apart from learning about amazing projects and interesting stakeholders, I learned a lot about prospects of transnational collaboration and developing common visions. It was inspiring to see how important it is to bring together small pieces-actors/projects to one place, and how by doing so, the bigger image of (future) Eurodelta becomes more distinct, imaginable, realizable.

More time to discuss with peers and experts within smaller groups. In general, closer collaboration with Universities and study programs would improve the quality of students' ideas and contributions. Students could work on a particular tasks related to Eurodelta area, and these results could be then presented and discussed rather than the results of ad-hoc workshops.

# Contributors

## PARTICIPANTS

### Team 1:

Ruta Ambewadikar - RWTH Aachen  
Ira Kataria - RWTH Aachen  
Yujing Ma - Vrije Universiteit Amsterdam  
Nida Bilgen - RWTH Aachen  
Parth Chaudhari - RWTH Aachen  
Muhammad Tahir Ali - RWTH Aachen

### Team 2:

Marcelo Carreiro Matias - ARUP and TUDelft  
Tonka Malekovic - RWTH Aachen  
Thomas Schram- AMS/TU Delft/Wageningen UR  
Ekaterina Plekhanova - RWTH Aachen

### Team 3:

Madzy Korte - Wageningen University &Research  
Valeska Götz - University of Applied Sciences Cologne & Wuppertal Institute  
Nicoleta Ciobanu - RWTH Aachen  
Melike Nur Ülsever - RWTH Aachen  
Roberta Cardoso - RWTH Aachen

### Team 4:

Seher Ulusoy - RWTH Aachen University  
Marie-Theres Kewitz - RWTH Aachen University  
Michelle Ritzen - Rotterdamse Academie van Bouwkunst  
Anton Yan - ETH Zürich

### Team 5:

Lucasz Bakowski - City of Rotterdam  
Rob Naulaers - VUB Brussels  
Rita Ventimiglia - Politecnico di Torino

### Team 6:

Amal al Balushi - RWTH Aachen  
Raghda Amr Elromy - TU Dortmund  
Athena Akbari - RWTH Aachen  
Gokce Demiral - RWTH Aachen  
Nienke Strikwerda - ARUP & TU Delft  
Ibtsam Saeed - RWTH Aachen

### Team 7:

Marianne Gatti - ETH Zürich  
Dominik Kilburger - Leibniz University Hannover  
Wilko Stornebrink - Radboud University Nijmegen  
Maurice Glarmin - Bergische Universität Wuppertal  
Nahed Nabhan - RWTH Aachen

### Team 8:

Alvaro Defalque - Université Libre de Bruxelles  
Laurin Scheid - Bergische Universität Wuppertal  
Tanja Potezica - Municipality of Amsterdam  
Kwinten Snijders Blok - University of Groningen  
Léa Swiers - Catholic university of Lille (ESPOL)

### Team 9:

Julia Pichard - RWTH Aachen  
Mauricio Barriga - TH Köln  
Yanjiao Wang - Studio Marchel-Wim van Dongen/TU Delft

### Team 10:

Yasemen Akça - RWTH Aachen  
Taif Al-Bassam - RWTH Aachen  
Sercan Demirpolat - RWTH Aachen  
Lea Steinhoff - TU Dortmund  
Lisheng Jiang - Wageningen University and Research

## UNIVERSITIES

Delft University of Technology  
RWTH Aachen  
KU Leuven  
Vrije Universiteit Brussels  
Erasmus University Rotterdam  
University of Amsterdam  
Wageningen University and Research  
Groningen University  
Leiden- Erasmus- Delft  
ETH Zurich  
The Hague University of Applied Sciences  
TU Dortmund  
University Duisburg-Essen  
Bergische Universität Wuppertal  
Wuppertal Institute for Climate, Environment

## SPEAKERS AND CONTRIBUTORS

MUST Urbanism  
Architecture Workroom Brussels  
MVRDV  
ISOCARP  
METREX  
Urbanista.ch  
Studio Hartzema  
OECD  
Danube Region  
INTERREG  
Brussels Perspective  
Ministry of Ecological and Solidarity Transition (France)

## SURE NETWORK

City of Amsterdam  
City of the Hague  
City of Antwerp  
City of Liege  
City of Dusseldorf  
City of Rotterdam  
City of Eindhoven  
Brussels Perspective  
Province of West Brabant  
Metropolitan region of Amsterdam  
Metropoolregion Rheinland  
Province of South Holland  
Deltametropolis Association  
BRAUN-URBAN  
METREX  
Métropole européenne de Lille (MEL)

Scan here for more details in our website



OR you can contact the coordinators:

- Alankrita Sarkar  
[alankrita.sarkar@deltametropool.nl](mailto:alankrita.sarkar@deltametropool.nl)
- Cecilia Braun  
[cecilia@braun-urban.net](mailto:cecilia@braun-urban.net)





(a consortia within the SURE Network)