

Walk'n'Roll final event
Barcelona metropolis, 6-7 July 2022

Technical visits introduction

Joan Caba

Urban Planner AMB + RiConnect Lead Coordinator



#WalkAndRollCities
Where streets belong to people!



Barcelona Metropolitan Area AMB

Barcelona Metropolitan Area

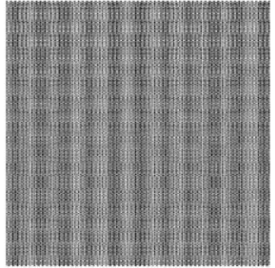
636Km/2

> 50% Green land

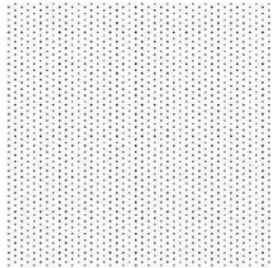


Car infrastructure

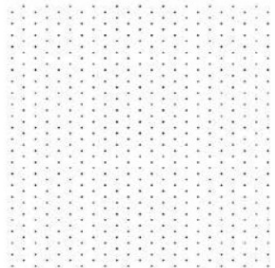
Density of cars (1 Km²)



Barcelona



Madrid



London



 **#WalkAndRollCities**
Where streets belong to people!



Current urban plan PGM 76

PGM 1987



 **#WalkAndRollCities**
Where streets belong to people!

Some projects for a better metropolis – Technical Visits

C-245

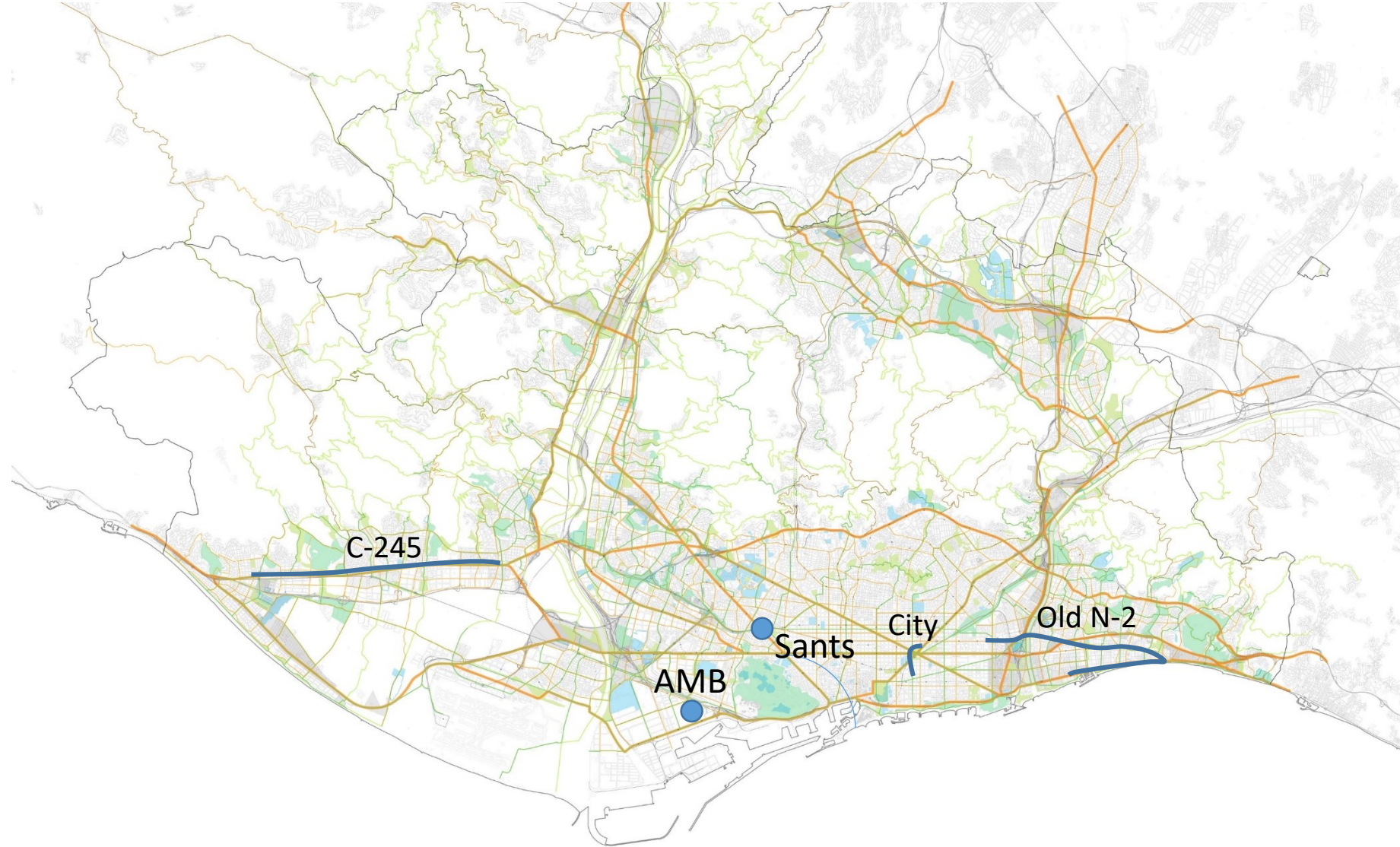
Angela Gori
DE SOLA GORI SL

Old N-2

Mina Sanatgar
Public Space, AMB

City

Neda Kostandinovic
Daniel Alsina
Ecologia Urbana, Barcelona



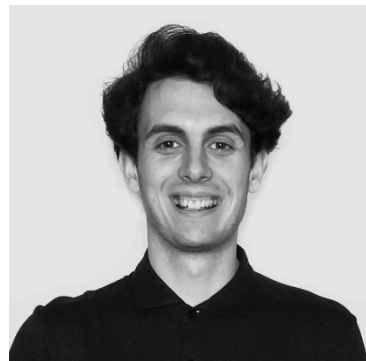


Check your group

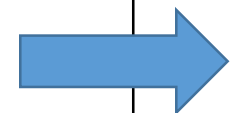
C-245 – Joan Caba



Old N-2 – Mikel Berra



City – Elena Argelich



Wed 6 July **Co-creation day**

📍 **AMB Headquarters** C/ 62, 16-18, Zona Franca, Barcelona

08:15 Meeting at Sants Station / Plaça Espanya
+ bus ride to the venue (Optional)

09:00 – 13:45 **Co-creation session** Group n° ____

15:00 – 19:30 **Technical visits** (3 groups)

- 🚲 ● **C-245:** from road to metropolitan avenue, a work in progress
- 🚲 ● **Old N-2:** rethinking a national road to achieve a civic axis
- 🚶 ● **City:** Pere IV + superblock + Glòries-Meridiana transformation

20:00 – 23:00 Informal dinner

Thu 7 July **Walk'n'Roll day**

📍 **Museu de les Aigües Agbar** Ctra. de Sant Boi, 4, Cornellà

08:15 Meeting at Sants Station / Plaça Espanya
+ bus ride to the venue (Optional)

09:00 – 18:30 **Walk'n'Roll event**

19:00 – 23:00 Dinner

Fri 8 July **RiConnect day**

📍 **Teatre Cooperativa** Ptge. de la Cooperativa, 5, Barberà

08:15 Meeting at Sants Station Bus
+ride to the venue Train

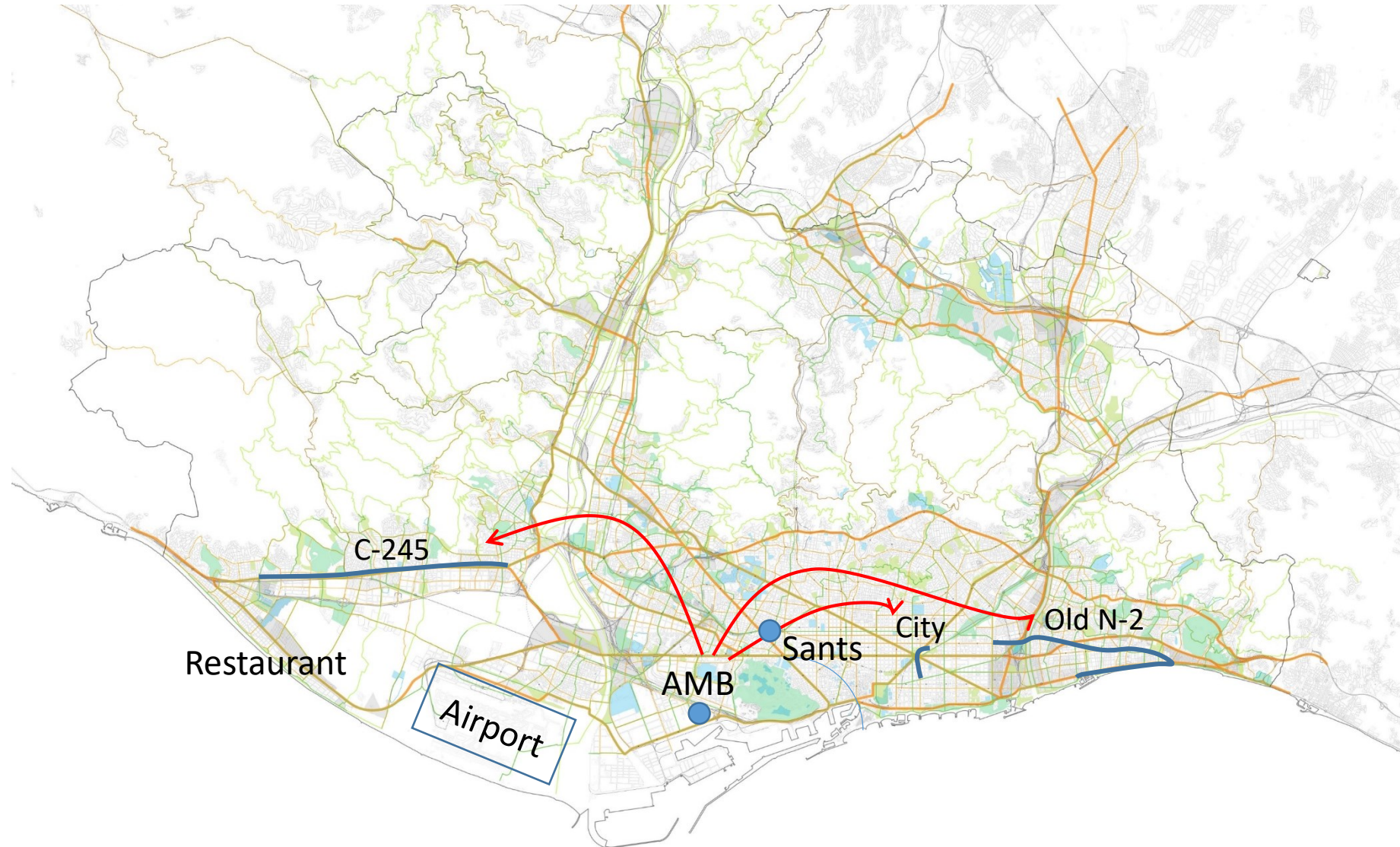
09:00 – 14:00 **RiConnect final meeting**

Emergency contact: (0034) 671 634 113



Urban and social structure PDU

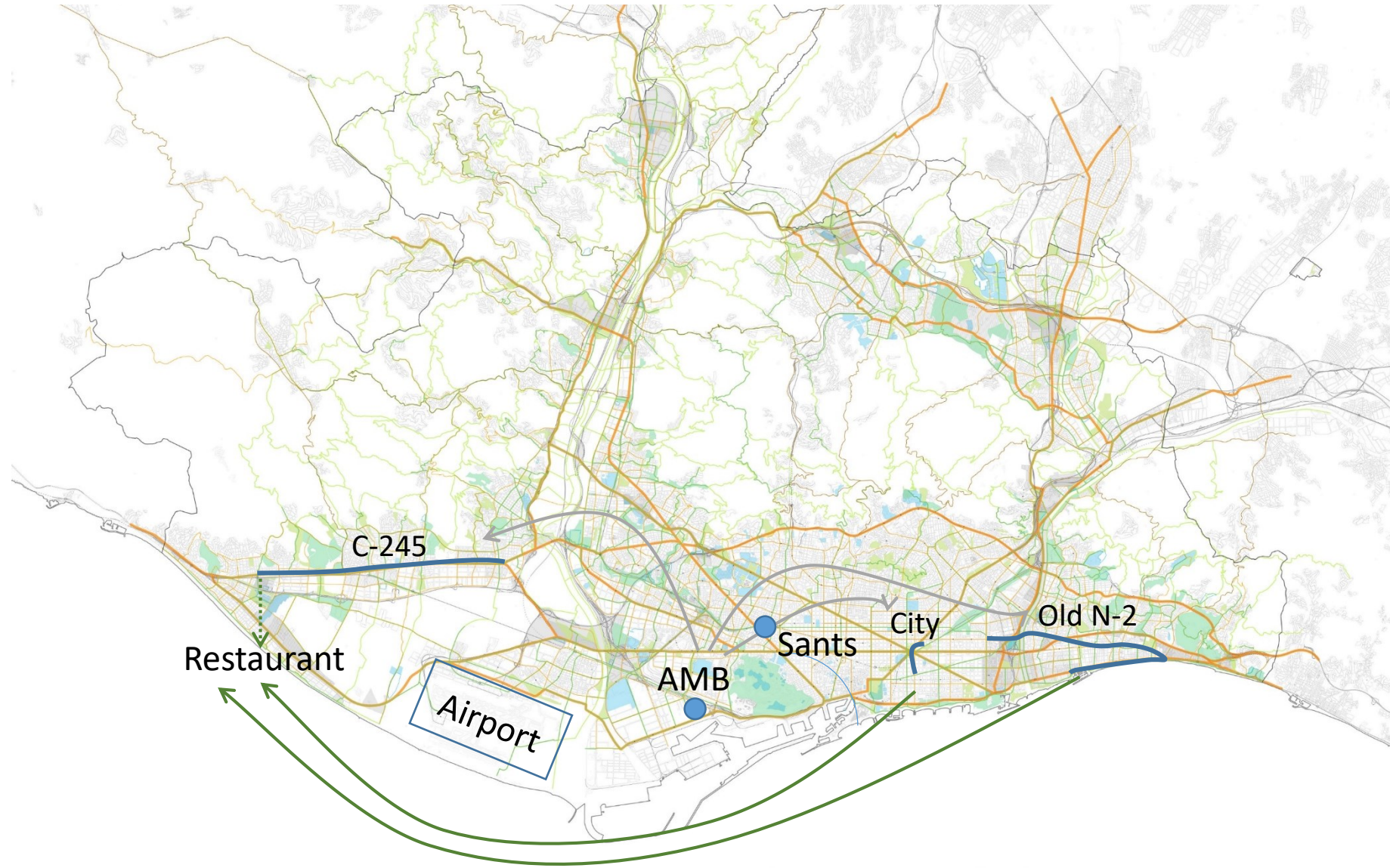
3 buses. Take your bus!



Urban and social structure PDU

BUS: City + Old N-2

Bicycle: C-245



 **#WalkAndRollCities**
Where streets belong to people!

Urban and social structure PDU

After dinner a bus will bring us back to Sants. Not AMB.

Please, take all your belongings with you

ENJOY!!!

