

METREX 'FROM ROADS TO STREETS' EXPERT GROUP KICK OFF, MARCH 30, 2020

# REINVENTING URBAN HIGHWAYS. LEARNING FROM EXPERIENCE

Paul Lecroart, Senior Urbanist

L'Institut Paris Region, The Planning Agency for the Paris Metropolitan Region



Montréal 2011 | 2017 Photos © Paul Lecroart Institut Paris Region



# REINVENTING URBAN HIGHWAYS. LEARNING FROM EXPERIENCE

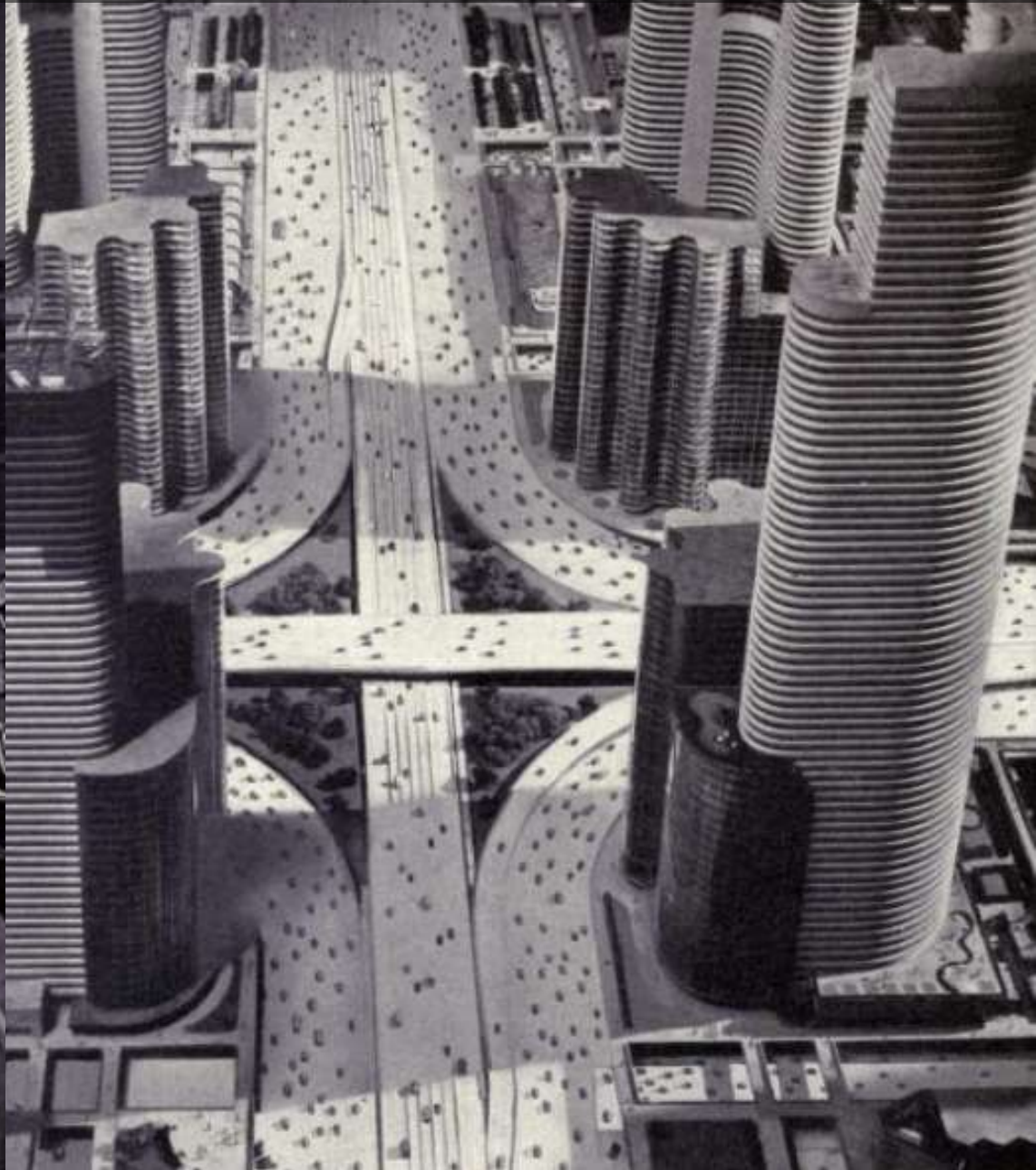
---

- The 20th Century Narrative: Adapt the City the Car
- International Highway to Boulevard Case Studies
- Experiences and Reflections in Europe
- Sharing Lessons
- EUROCITIES/METREX Exchange Platform
- Discussion



# The American 20<sup>th</sup> Century Promise

# The Car will Save Our Cities



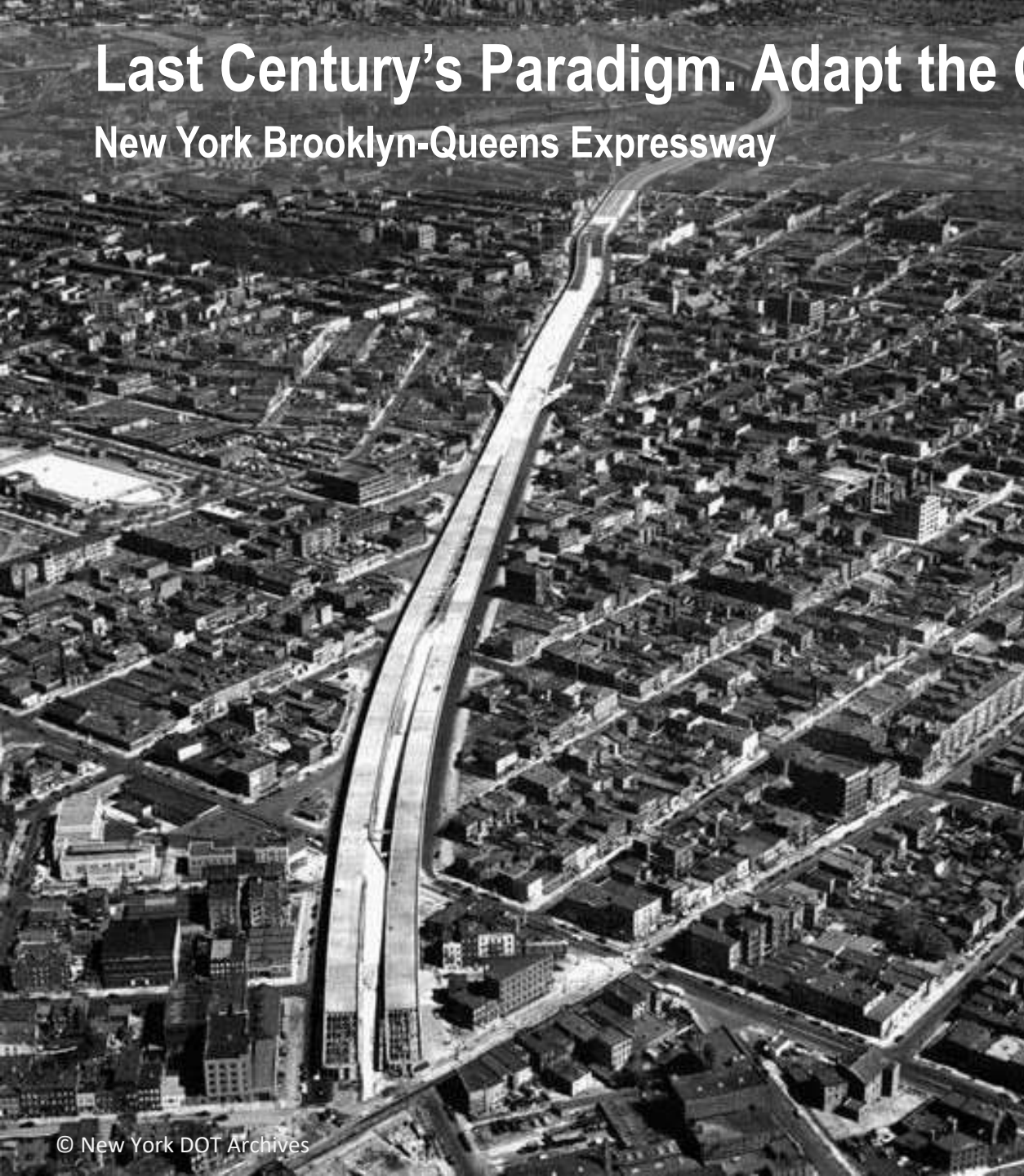
**Futurama World Fair, New York 1939**  
**Sponsor : General Motors**

© Norman Bell Geddes - Magic Motorways, published 1940

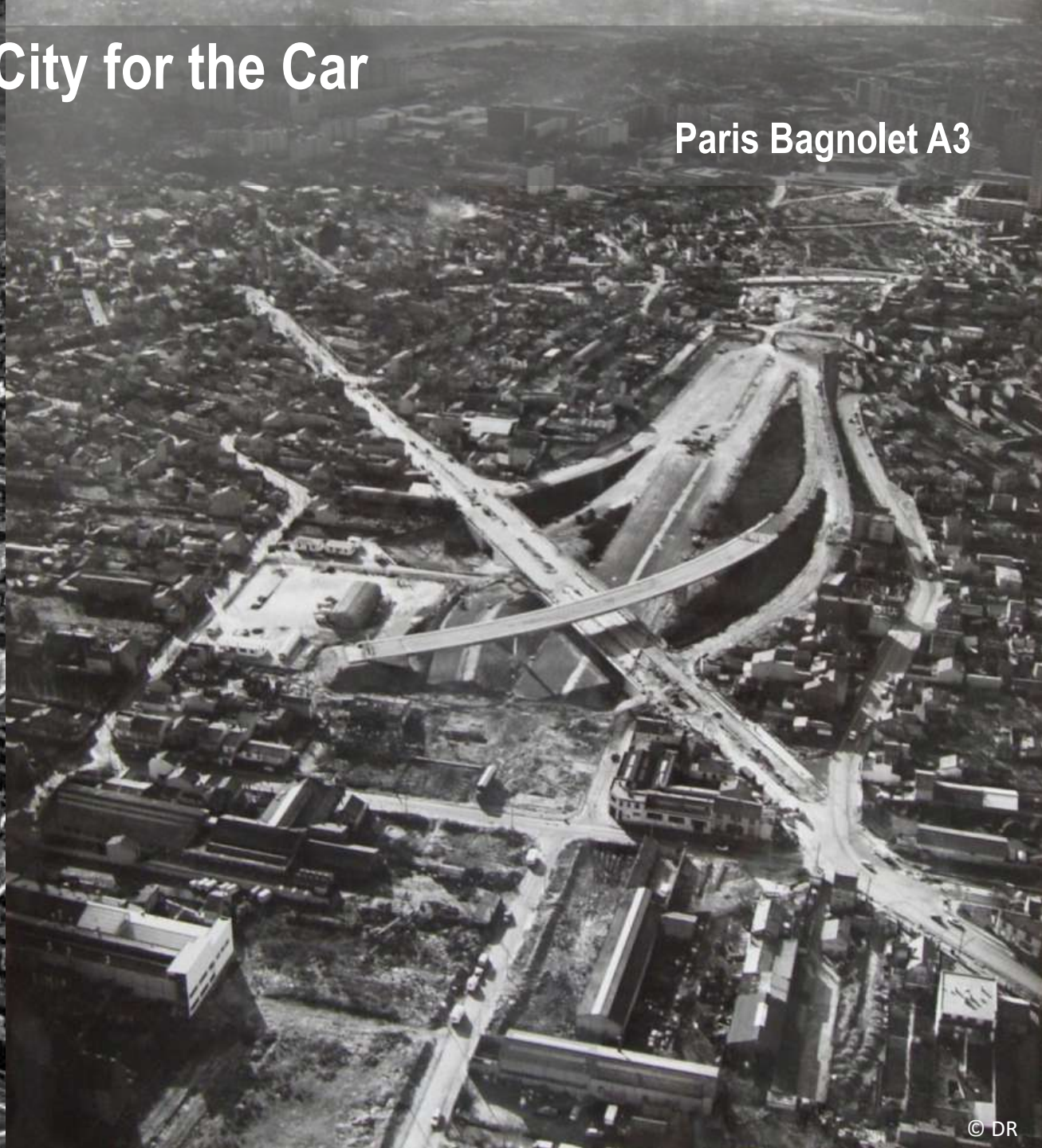


# Last Century's Paradigm. Adapt the City for the Car

New York Brooklyn-Queens Expressway

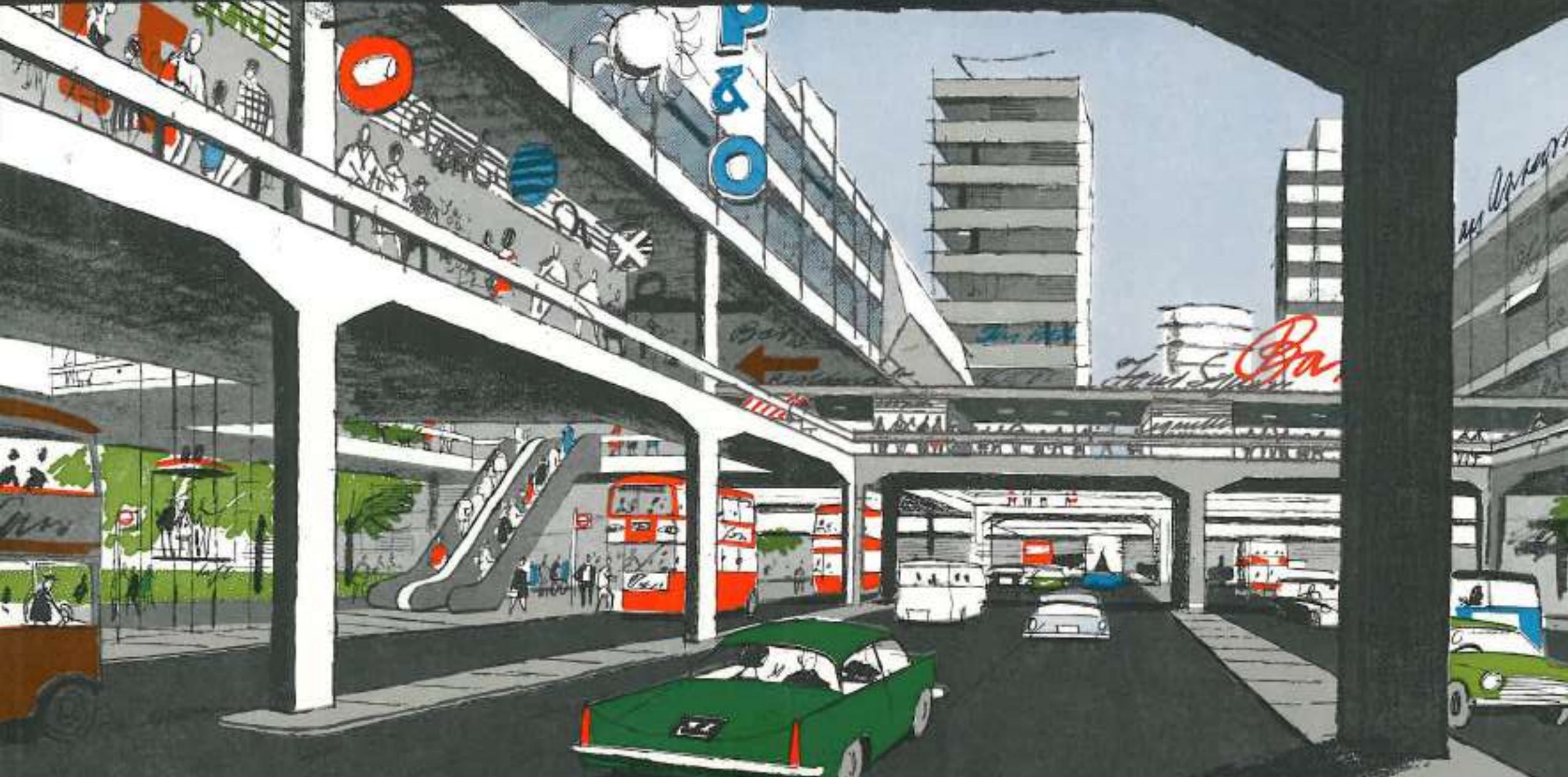


Paris Bagnole A3





# Design a New City for a New Man. Traffic Segregation





# Fonctional Segregation. Zoning



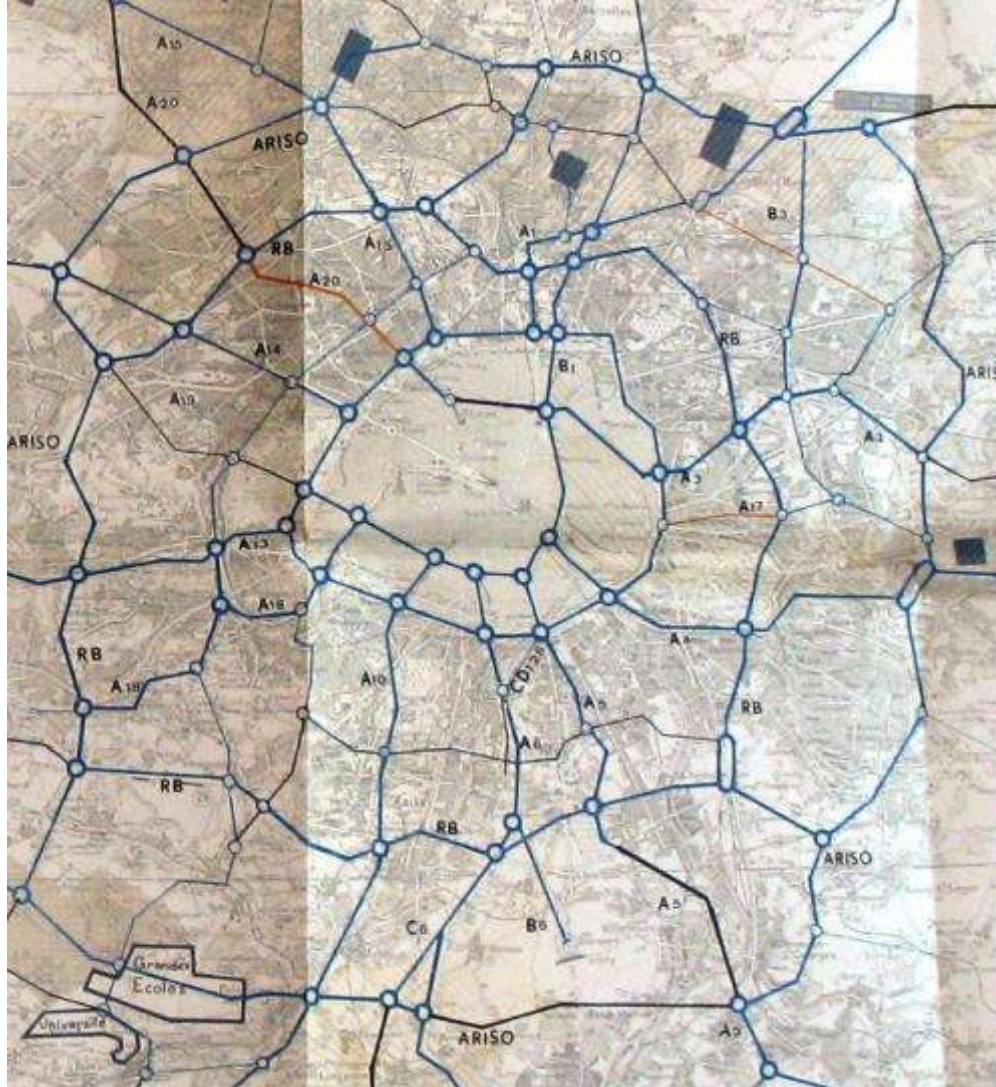
Paris, Orly-Rungis A86

© DRIEA / Gobry



# Traffic Simulation Models Imported from the US

## Massive Highway Investments



Projet pour rocades de banlieue 1964 © DR-SARA



« Traffic simulation modelling is designed for massive road capital investment.

The size of traffic zones allows to eliminate walking a marginal travel mode.

All in all, new roads induce new traffic »

*French Researcher, Gabriel Dupuy, 1975*

Thesis, Paris-X University



# Urban Sprawl



Paris, Marne-la-Vallée

© EPAMARNE



# Negative Externalities



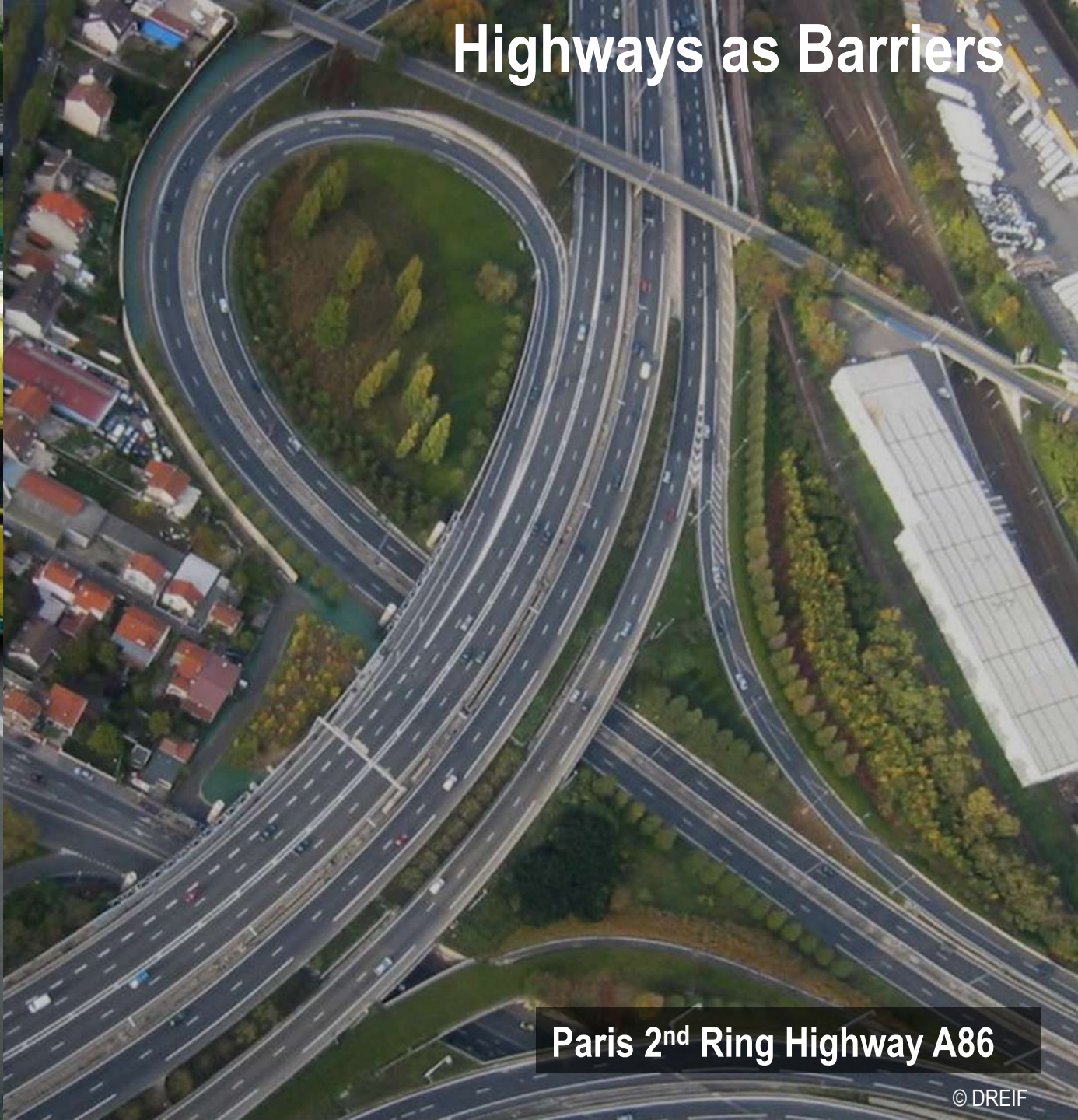
Paris, Bondy A 86





Paris 1<sup>st</sup> Ring Highway Péripherique

© Paul Lecroart Institut Paris Region



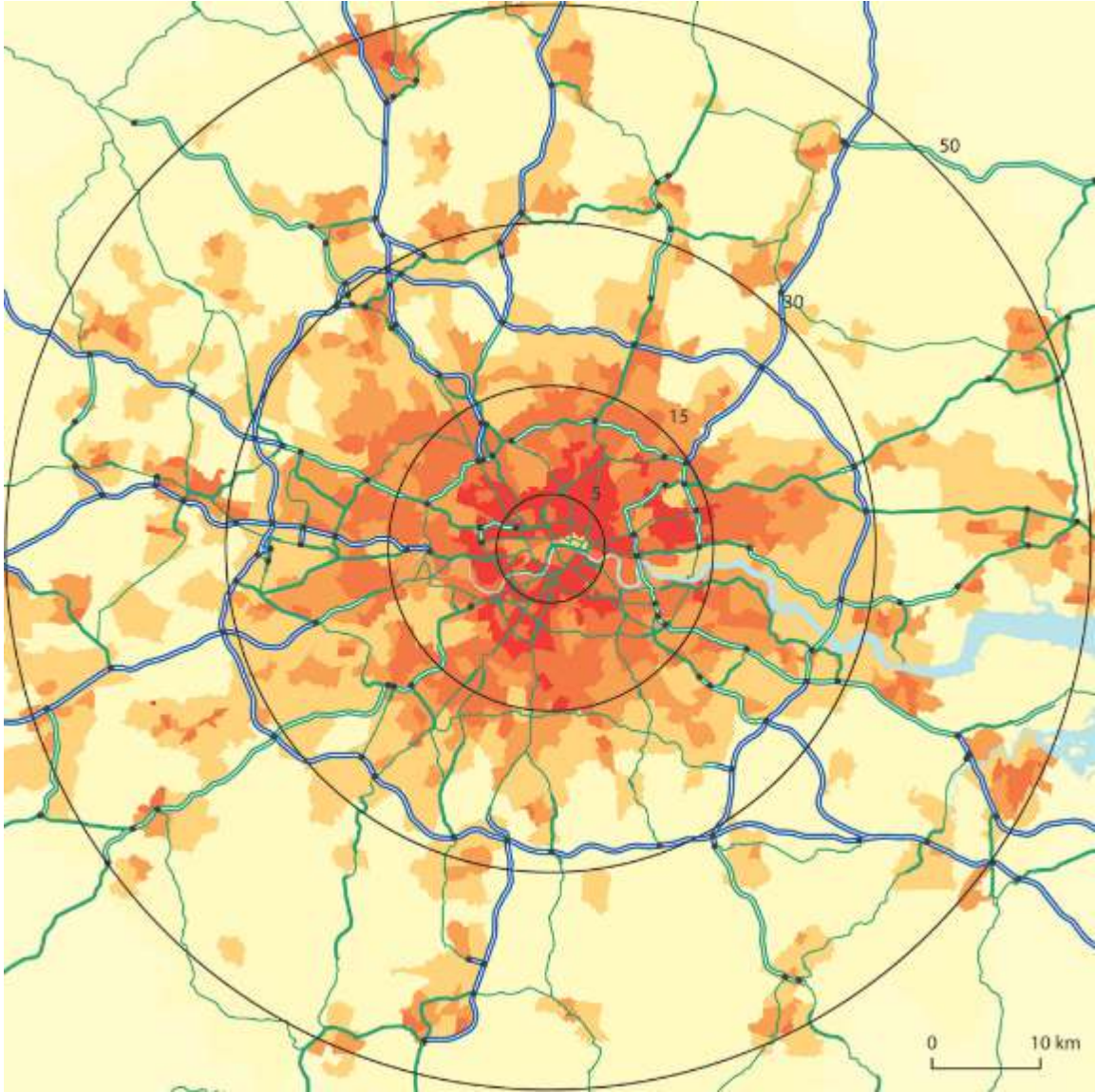
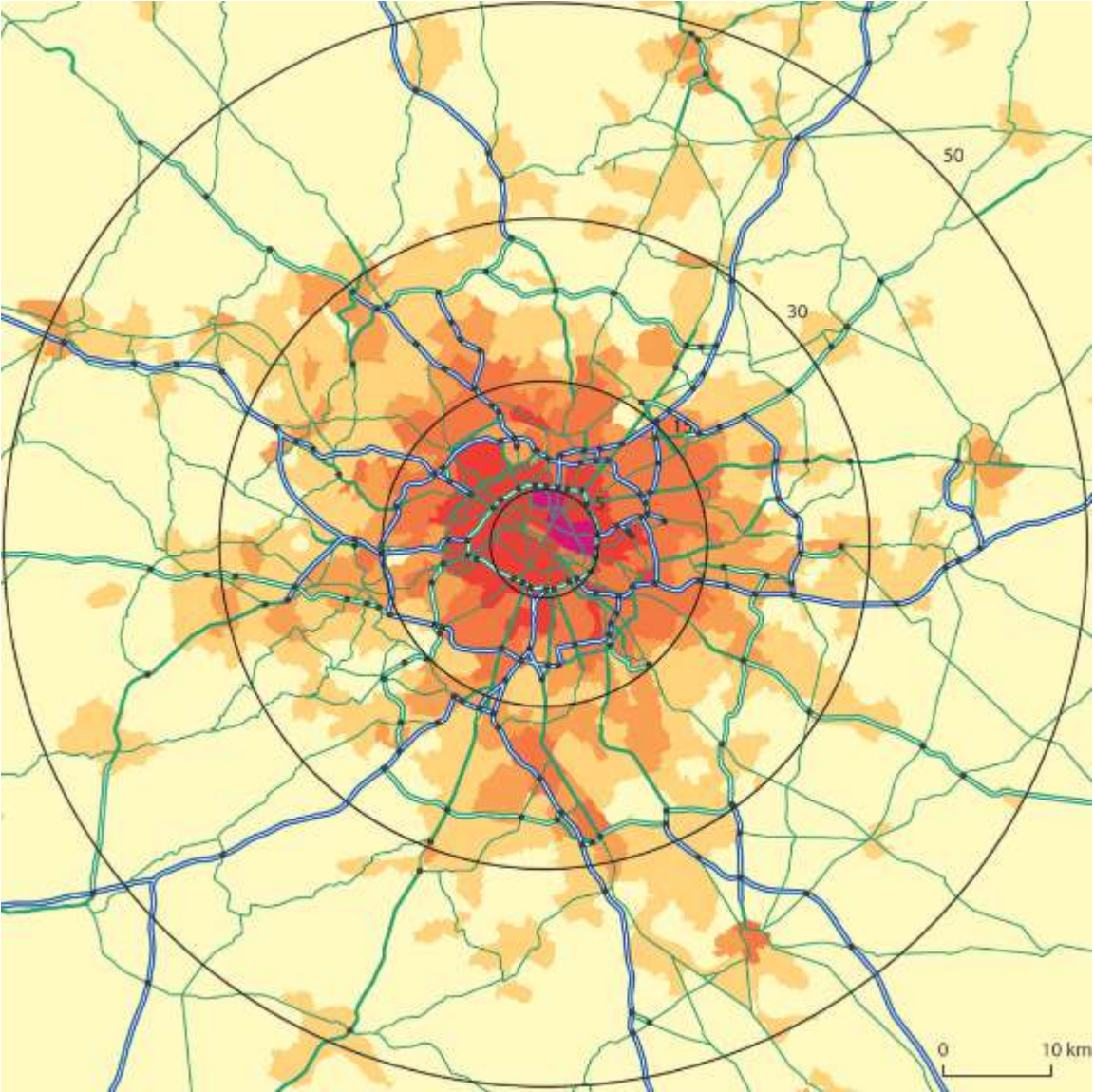
# Highways as Barriers

Paris 2<sup>nd</sup> Ring Highway A86

© DREIF



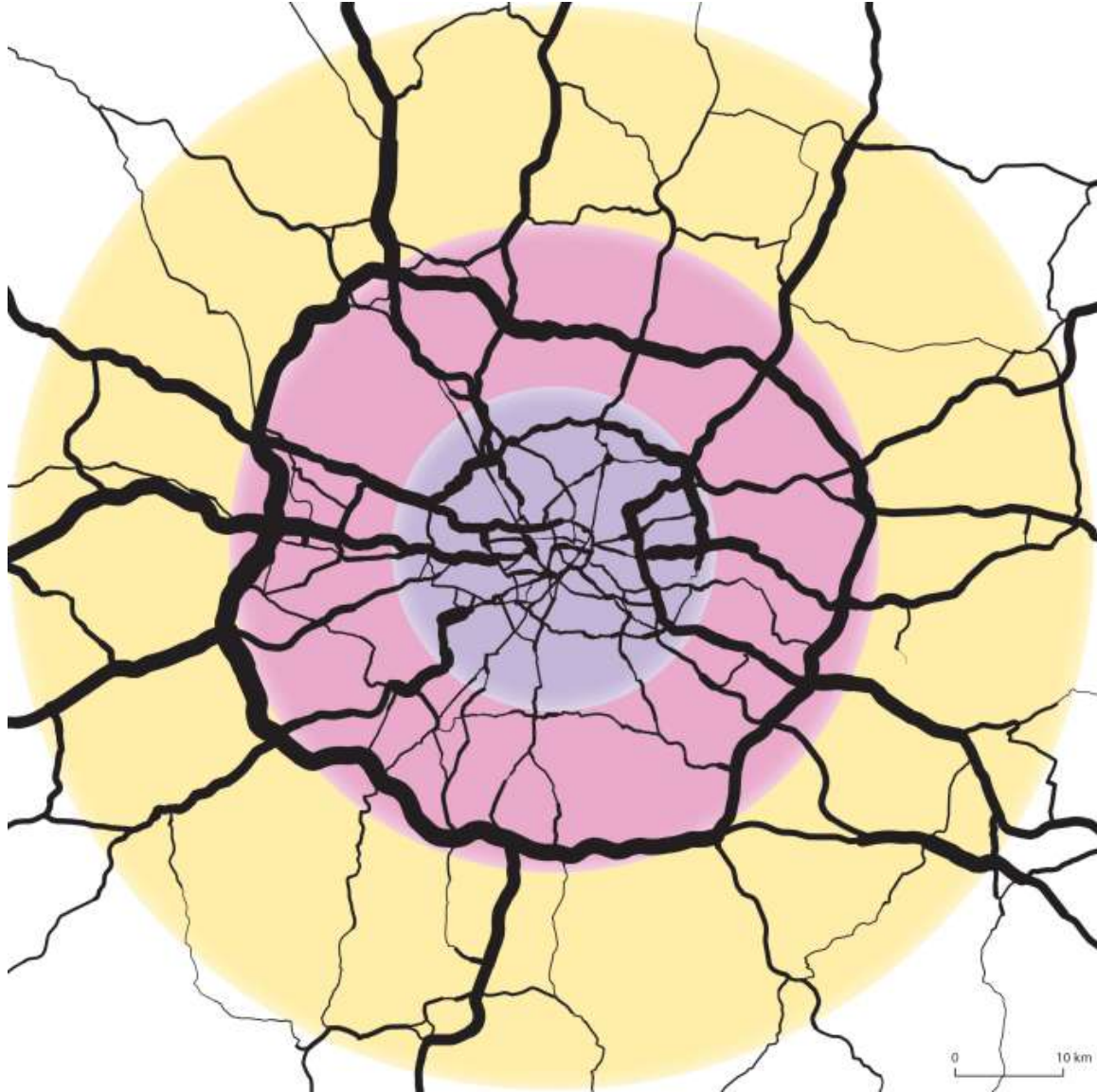
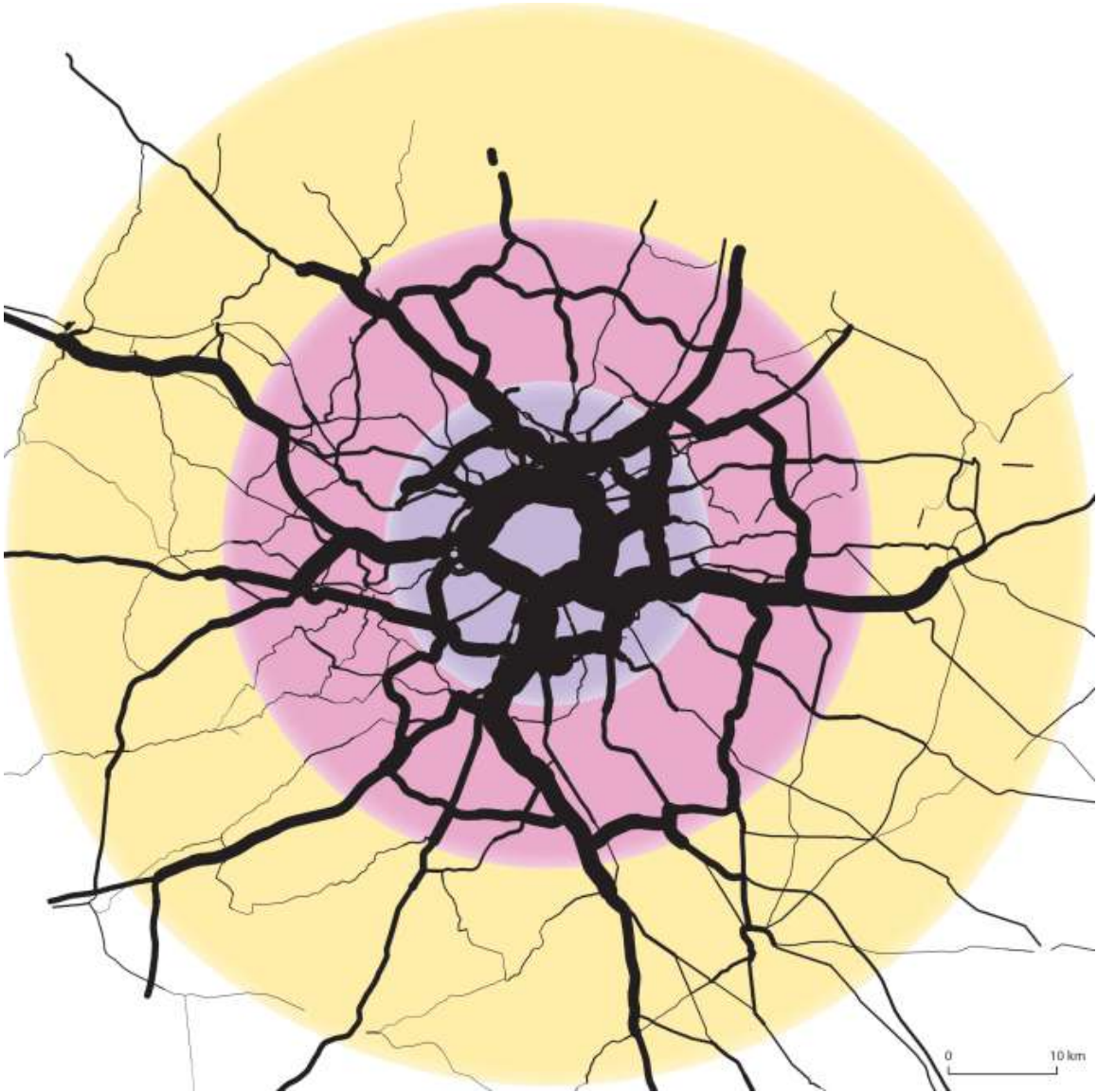
# Too Many Highways in our Cities? Comparing Paris & London Regions



*P-L.Certonze ENSG/Univ. Paris-I IAU 2013*



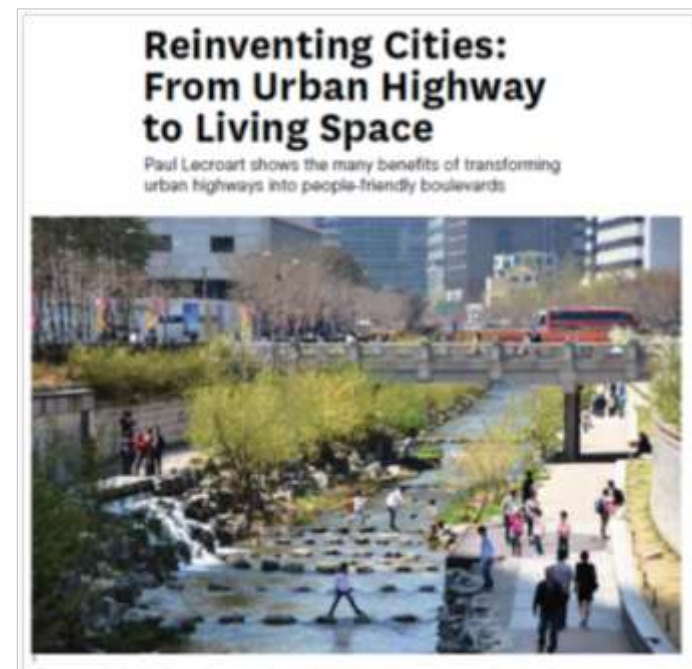
# Paris / London Regions. Road Network and Car Traffic (2012)



P-L.Certonze ENSG/Univ. Paris-I IAU 2013



# Highway-to-Boulevard International Case Studies





# New York **West Side**

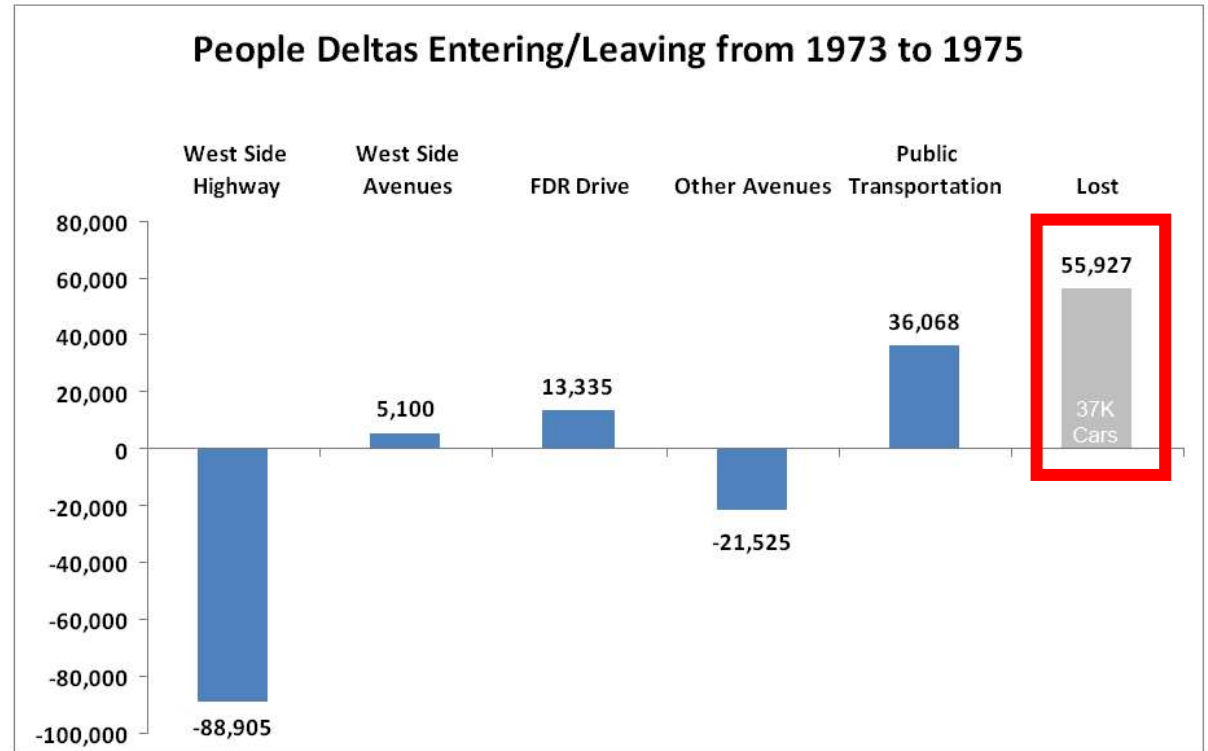
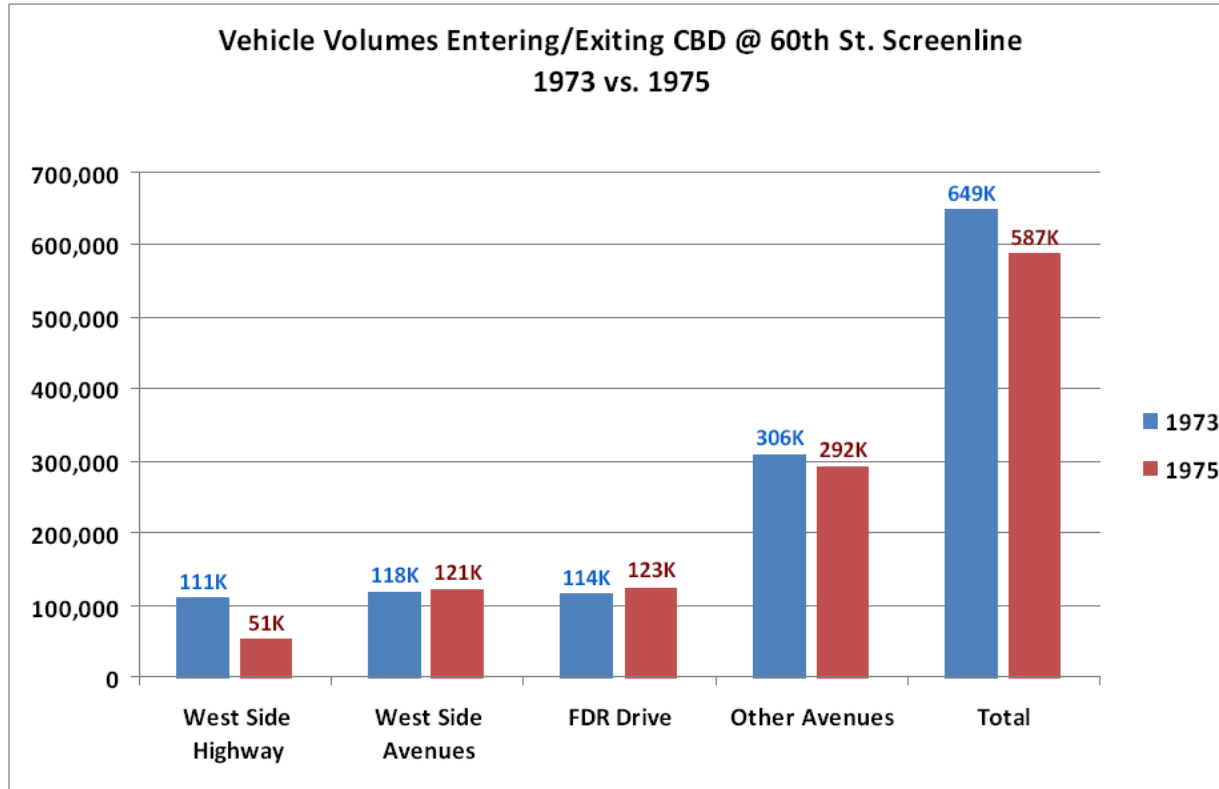
1970s'





# New York West Side

## WHAT HAPPENED TO THE TRAFFIC?



Note: The number of people entering /exiting CBD increased by 25,000 people 1973 vs. 1975

© Courtesy of Sam Schwartz



# New York West Side Street / 11th Street

2001





# New York West Side Street / 11th Street

2011





# New York **West Side Hudson River Park**

Today





Seoul  
Cheonggyecheon  
Before 2003



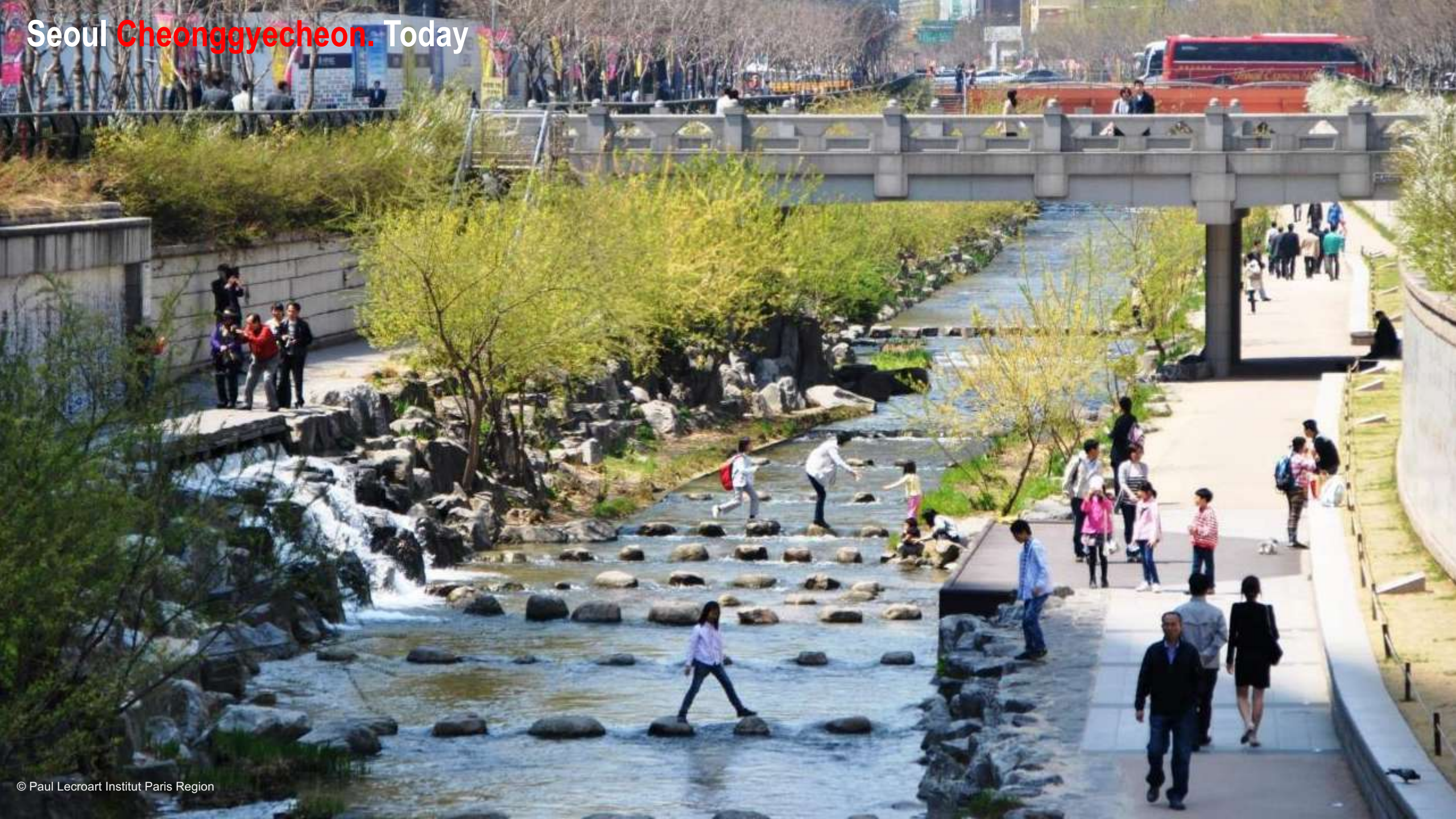


# Seoul Cheonggyecheon. After 2005





# Seoul Cheonggyecheon. Today





# Seoul Cheonggyecheon. Comprehensive Transport Demand Management





# Seoul Cheonggyecheon. Before / After



© Seoul Metropolitan Government

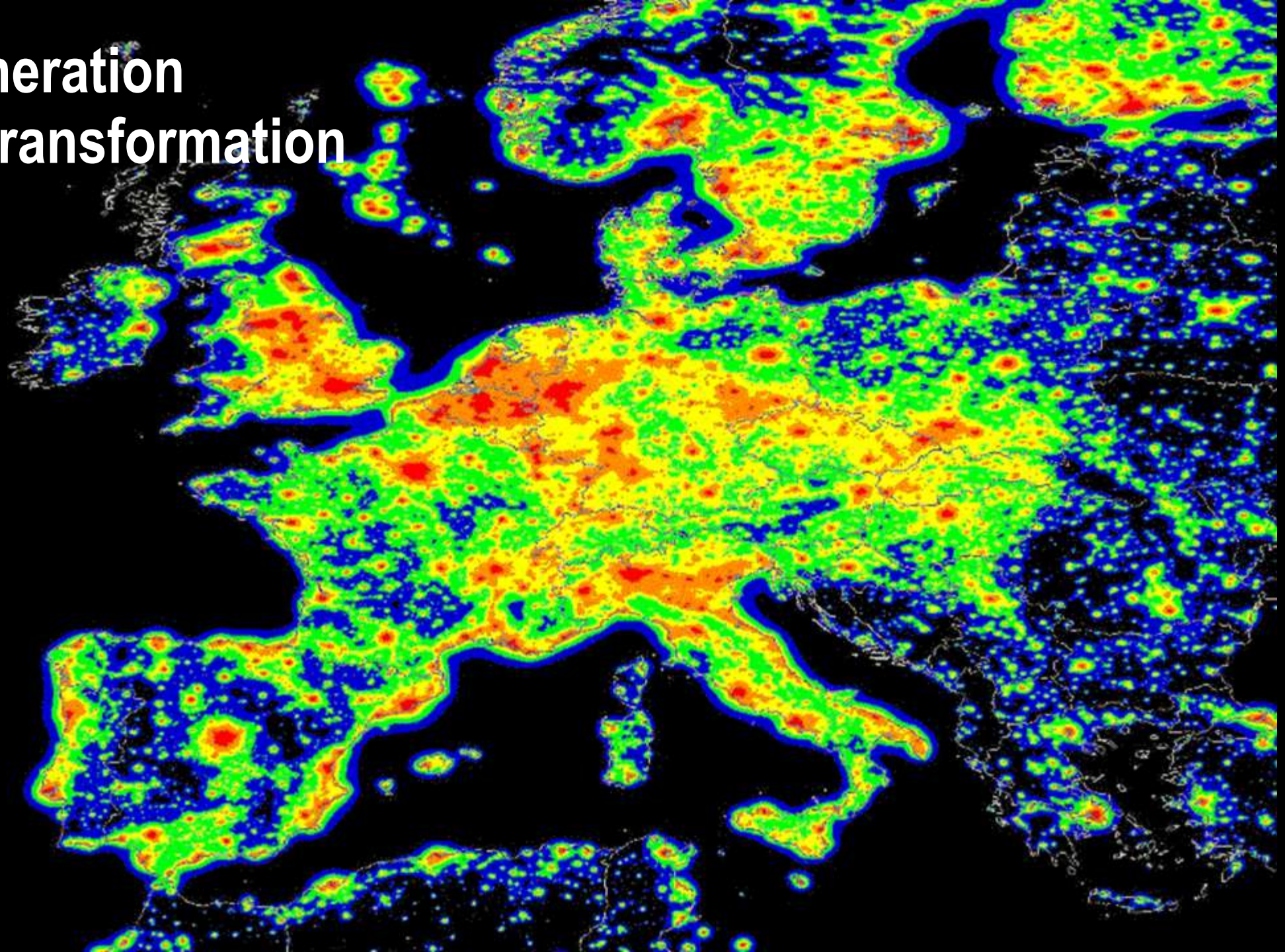


© Paul Lecroart Institut Paris Region



# Urban Regeneration & Highway Transformation in Europe

Experiences  
Reflections





# Birmingham **Breaking the Concrete Collar** 1988-2025



© City of Birmingham

**Masshouse Circus (2002) | East Side Regeneration (2013)**

© Paul Lecroart Institut Paris Region



# Utrecht From Canal to Ring Road to Canal 1997-2020



City Ring (2008)



Catharijnesingel Project (2020)



# Nantes A 801 Highway to Busway Intensification 2000-2008+





# Lyon A43 Highway to Boulevard Regeneration

2010-2012+





# Paris Montreuil A186

## Tramway Boulevard 2009-2023



Photos © Paul Lecroart Institut Paris Region

la ligne qui change tout [www.t1bobigny-valdefontenay](http://www.t1bobigny-valdefontenay)



# Paris River Banks Expressway Pedestrianisation 2012-2019



Photos © Paul Lecoart Institut Paris Region

© Paul Lecoart IAU

© Ville de Paris





GRAND PARIS

# LES ROUTES DU FUTUR

CONSULTATION INTERNATIONALE

# SALON DES MAIRES D'ILE-DE-FRANCE

23<sup>e</sup> édition

#SMIDF

International Ideas Competition

## ***The Future of Paris Region's Highways 2018-2020+***

- 19 Partners, 4 Teams, 4 Topics, 13 Exhibitions
- Regional Strategic Conference
- Workshops on the Future of Périphérique



# Reflections *The Future of Paris Region' Highways*



Visualisation  
A15 before/after

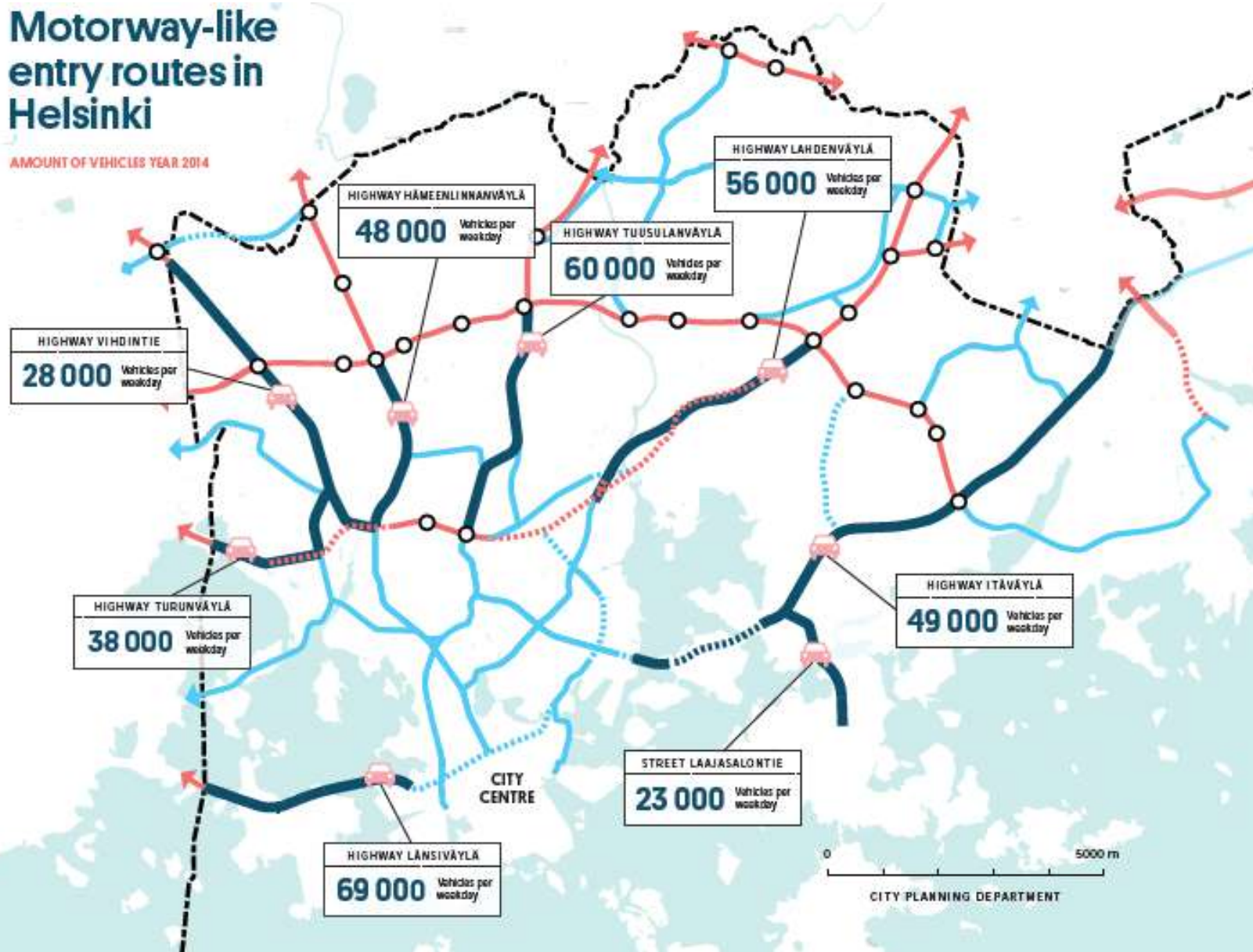




# Reflections Helsinki City Boulevard Strategy (2016)

## Motorway-like entry routes in Helsinki

AMOUNT OF VEHICLES YEAR 2014





# Reflections **Oslo Hovinbyen, Vision for the future of Østre Aker Vei**



© Paul Lecroart Institut Paris Region

© De Cayardon bureau



# Sharing Lessons





# Lesson #1. Traffic Evaporation & Traffic Diversion

**-82%**

**Seoul CGC  
2002-2011**

**-65%**

**Milwaukee Park East  
1998-2009**

**-56%**

**San Francisco  
Embarcadero  
1989-2011**

**-50%**

**Nantes A801  
2000-2008**

**-44%**

**San Francisco  
Central  
1995-2008**

**-30%**

**Lyon Mermoz  
2003-2012**

**-29%**

**Paris Right Bank  
2015-2018**

**-27%**

**New York West Side  
1989-2011**

**-26%**

**Portland HD  
1973-2015**



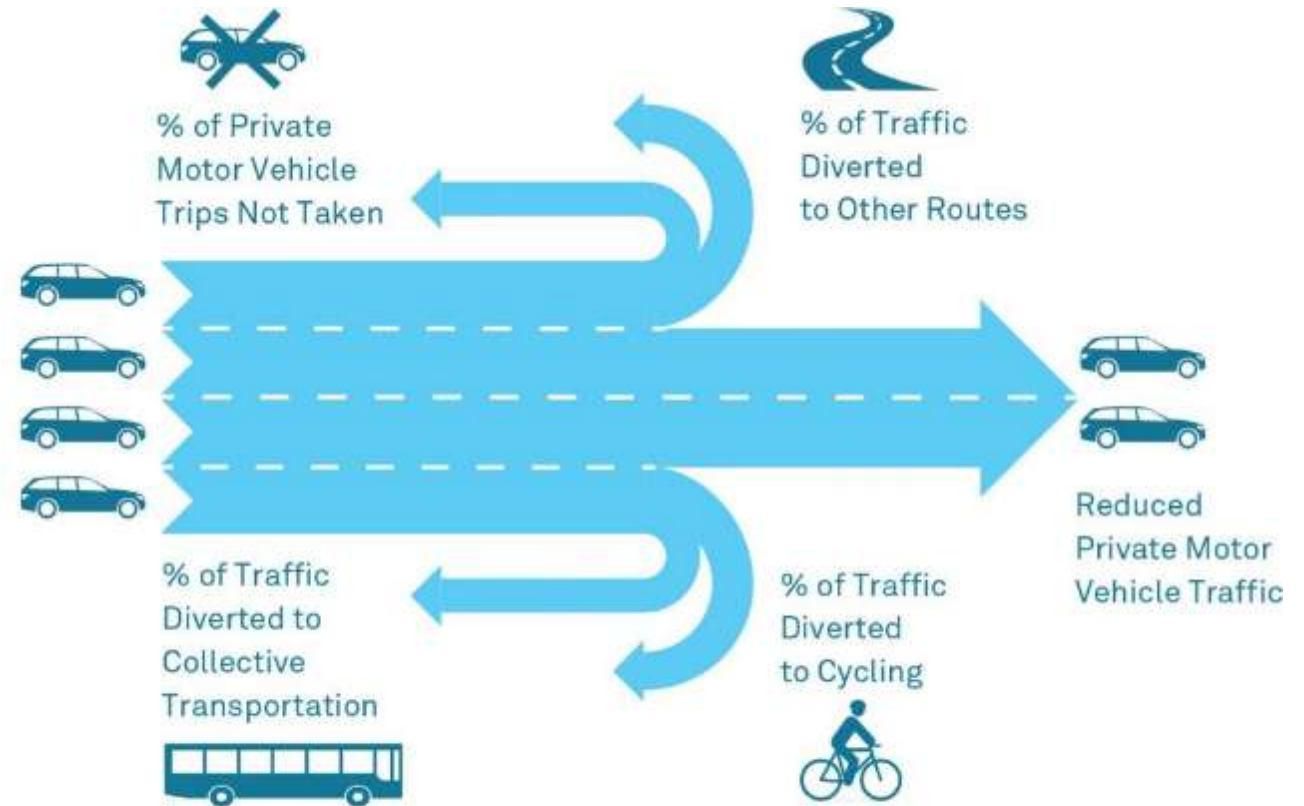
# Lesson #1. Traffic Evaporation. Change of Travel Behaviour

## Disappearing Traffic. Patterns of Change

Cairns, Goodwin & al. Traffic Impact of Highway Capacity Reduction: Assessment of the Evidence, DETR 1998.

Cairns, Goodwin & al. Disappearing Traffic: The Story So Far, 2002

- Other Route
- Other Moment
- Travel Mode Shift
- Car-Sharing
- Activity Programme/Organisation
- Less Trips
- Work at Home, Shop Locally
- Re-Localisation of Home/Job
- Combinations of...



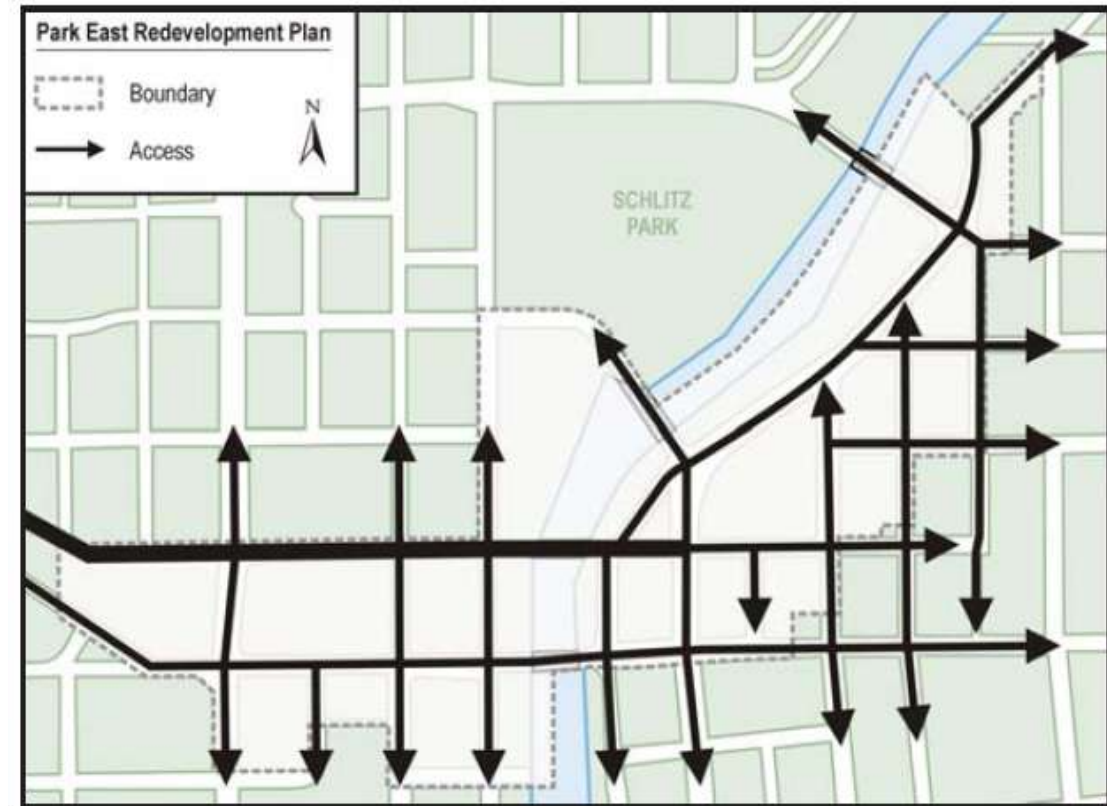
**Traffic Evaporation.** Research shows that when road capacity is shifted to other modes, some peak-period traffic disappears from the network. Drivers shift to other modes, make trips at other times, or shift destinations.



# Lesson #2 Reconnecting Opens New Possibilities

More legibility, less detours, lower speeds, less noise = value creation

Milwaukee, Park East Corridor



© City of Milwaukee



# Lesson #2 Reconnecting Opens New Possibilities

## Walking and Cycling



Photos © Paul Lecroart IAU

San Francisco, Embarcadero

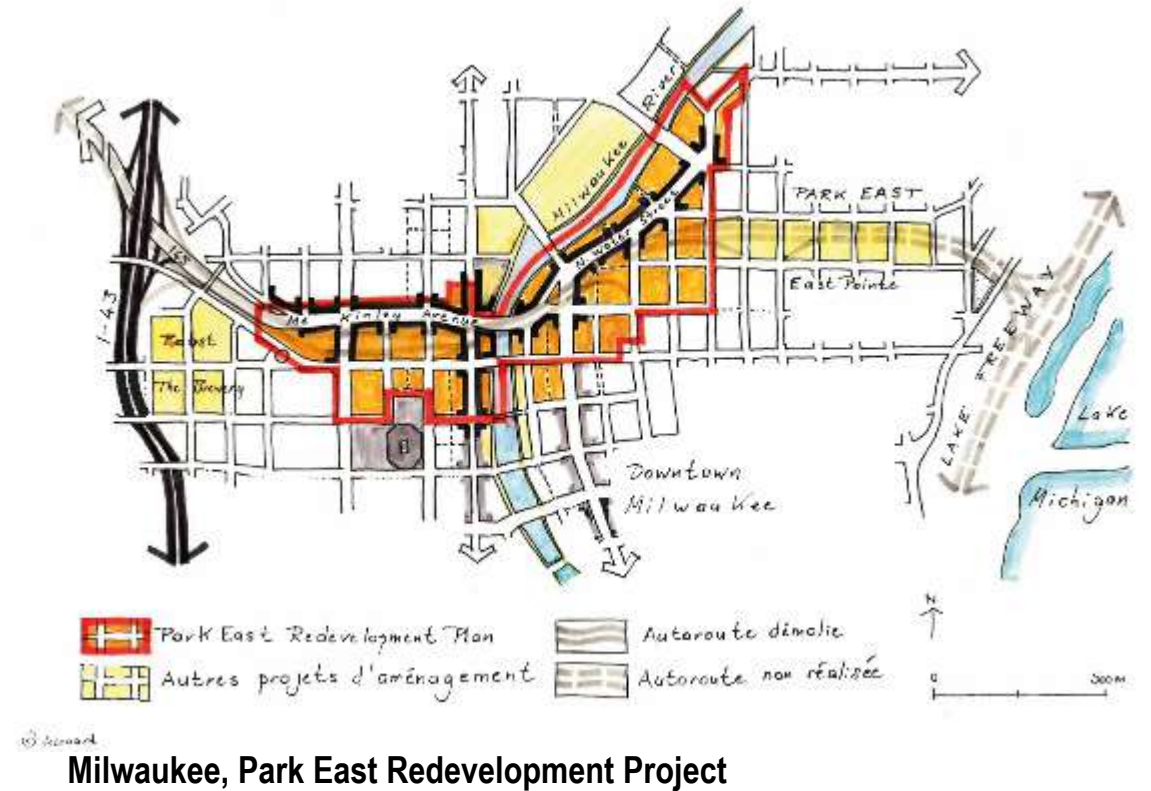


New York, West Side



# Lesson #3 Urban Regeneration Combined to Road Change (or vice-versa)

- Unlocking Intensification Opportunities
- Regeneration projects
- Mix-Use New Development incl. Housing
- New Public Spaces
- Green Infrastructure
- Economic Revitalisation



Photos © Paul Lecroart IAU

Séoul, Cheonggyecheon



San Francisco, Octavia Boulevard



New York, West Side



San Francisco, Embarcadero



# Lesson #3 BUT Urban + Road Transformation = Autonomous Processes



Portland Waterfront



Vancouver Northeast False Creek



San Francisco Octavia/Market Plan



New York Hudson Yards



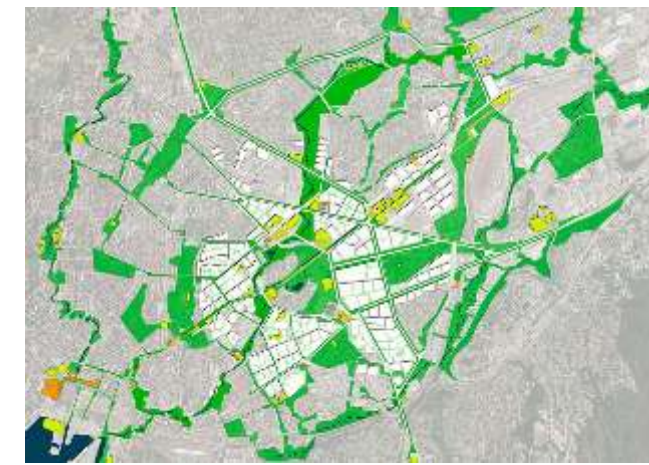
Paris Hauts-de-Montreuil Plan



Utrecht Station Area



Birmingham East Side Curzon Street

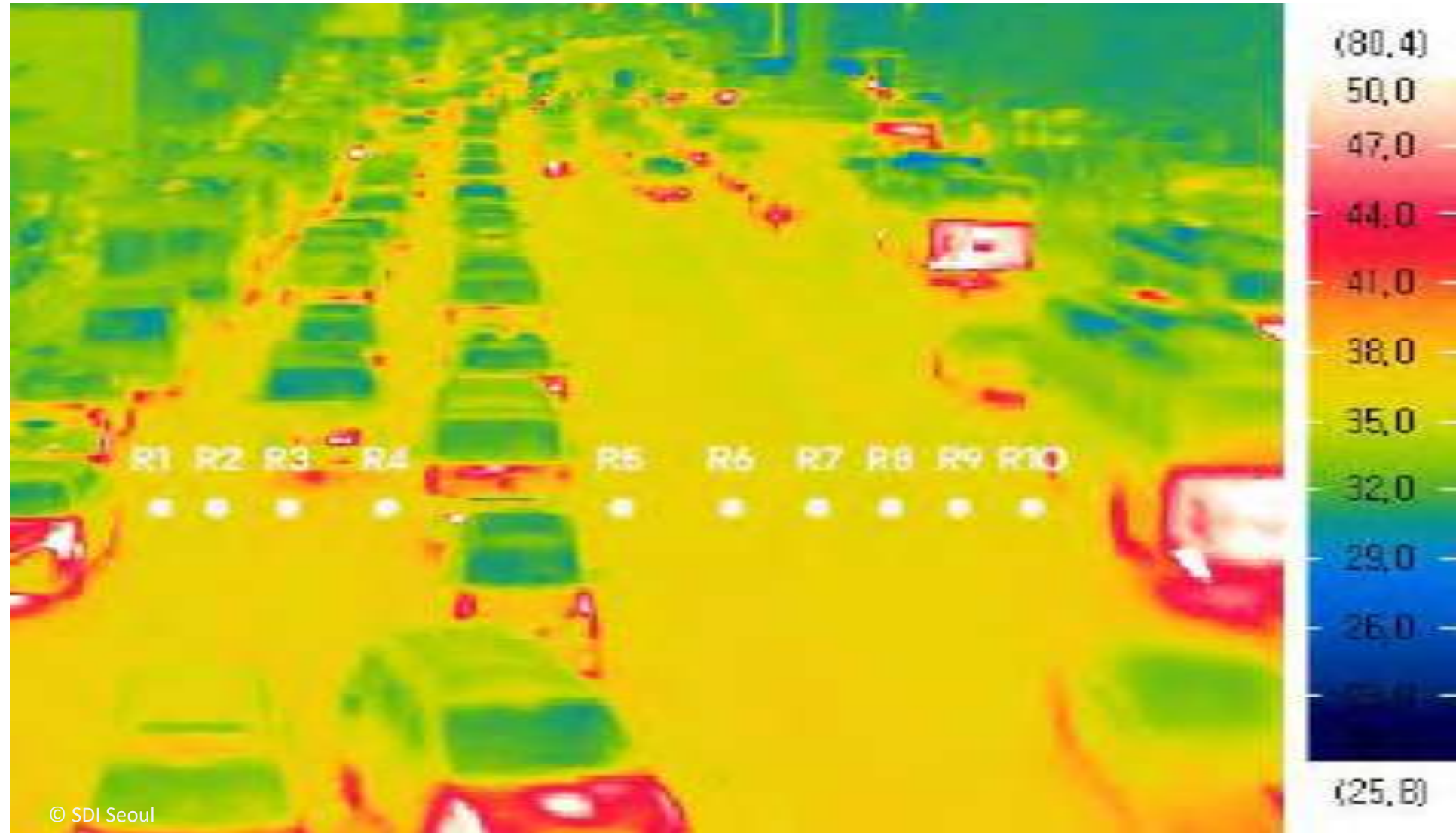


Oslo, Hovinbyen (Competition)



# Lesson #4 Environmental Benefits

- Noise
- Air Quality
- Climate
- Health
- Resilience





# Lesson #5. Great Boulevards = Great Cities



Paris, Neuilly avenue Charles-de-Gaulle

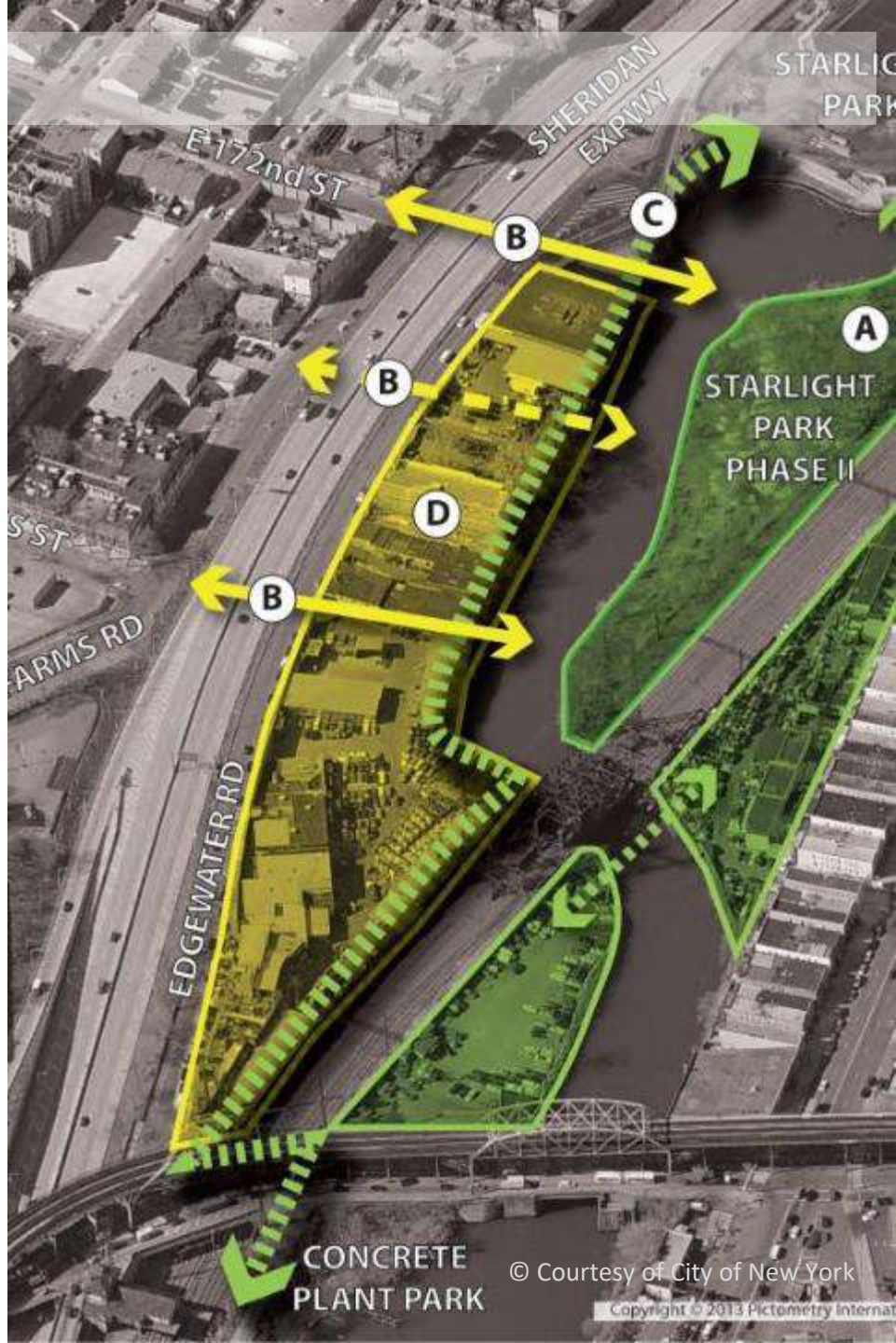


# Lesson #5. Great Boulevards Can be Hybrid



New York, Sheridan Expressway

© Paul Lecroart IAU



© Courtesy of City of New York

Copyright © 2013 Pictometry International



# Lesson #6. Public Participation is Crucial

## Vancouver, idea competition

vancouver viaducts & eastern core

# re|CONNECT



### Submission Gallery

Below are the submissions which were received during the re:CONNECT competition. Click on an image to view the submission in full, and to vote and comment on it.

Submissions are displayed in the order they were received.



### Connecting the Core

This component of the competition seeks high-level ideas for the future of Vancouver's Eastern Core. Design solutions should seek creative, BIG PICTURE opportunities that envision a sustainable and innovative future.



## Toronto, debate on scenarios et quick wins





# Lesson #6. Public Participation is Crucial

Temporary Highway Closure *Nuit Blanche* Event October 2019

Paris





# Lesson #6. Public Participation is Crucial

## Workshop with Kids Future of Highways Competition Paris Region





## Lesson #7. Strategic Metropolitan Projects

- Not a Question of Data & Traffic Counts
- City Long-Term Development Model
- Risk Taking
- Success Relies on Political Will

### Tough Issues

- Finance: How Much? Who's going to pay?
- Acceptance: Can it be a Win-Win?
- Gouvernance: Who is going to decide?
- Where do we start?

Inauguration de l'autoroute par le maire 1966



© Archives Magazine MacLean's

Inauguration du chantier de déconstruction 2016



© Patrick Sanfaçon La Presse



# EUROCITIES/METREX Exchange Platform + URBACT

## EUROCITIES Working Group *Urban Regeneration in the City Fringe*

Oslo, Amsterdam, Brussels, Düsseldorf, Gothenburg, Lyon, Prag, Utrecht, Vilnius

## METREX Expert Group *From Roads to Streets*

Institut Paris Region, WMCA Birmingham, AML Lisbon, UrbaLyon/MGL Lyon, MV Warsaw, Rotterdam, MR-N Frankfurt, PMA Porto, Brussels-Capital,

## URBACT Project *RiConnect*

AMB Barcelona, AMR Amsterdam, GGSMA Gdansk-Gdnya, KMA Krakow, PMA Porto, MGP Paris, GM Manchester, Thessaloniki



# **EUROCITIES/METREX Exchange Platform**

## **Interest**

## **Commitment to Working over 2020-2022**

**Questionnaire > Completed by April 3?**

- **Experience to Share > Case Studies**
- **Expectations about Exchange Platform**



# EUROCITIES/METREX Exchange Platform

## Expectations

- Benchmarking
- Understanding of processes and impacts
- Drawing lessons > peer review or workshops
- Going further into some topics
- Strengthening technical position
- Helping to raise issues at a higher level
- Other...



# EUROCITIES/METREX Exchange Platform

## Themes of Interest

- Strategic Planning and Multi-Level Cooperation
- Traffic and Transport
- Urban and Regional Planning
- Urban Design
- Environmental Impacts
- Economic Impacts
- Public Participation
- Project Development and Delivery
- Teasers and Temporary Urbanism
- Innovative Technical Solutions
- ...



# EUROCITIES/METREX Exchange Platform

## Suggestions

- Outcomes
- Case Study Sheets
- Final deliverables
- Resources
- Communication
- Meeting Agenda
- Form and content of meeting in Lyon (Autumn 2020)
- Practical matters (in times of Coronavirus)
- Other
- ...



# **EUROCITIES/METREX Case Studies > Secure List by April 15?**

**NORWAY Oslo** Ostre Aker Vei Hovinbyen (2013+)

**BELGIUM Brussels** E411 Boulevard Herrmann-Debroux (2019+)

**FRANCE Lyon** A6-A7 Highway to Boulevard Reconversion (2010+) (?)

**SWEDEN Gothenburg** Högsbo Dag Hammarsköldsleden Transformation (?)

**GERMANY Düsseldorf** Kennedydam Project (?)

**LITHUANIA Vilnius** Naujininkai Area Regeneration (?)

**CZECH REPUBLIC Prag** Eastern Road Corridors (?)

**FINLAND Helsinki** City Boulevard Strategy -5 key projects (2016+)?

PORTO?

BIRMINGHAM?

FRANKFURT?

BARCELONA?



# Sharing Experience. Case Study Sheets > Draft Information by May 15?

## 1.Regional/Metropolitan Context

Name of Metropolitan Body, Organisation and Powers [MAPS, CHARTS, ...]

Key-Data: Population, Jobs, Urban Area, GDP/head, Modal Split,...

Regional/Metro Strategies: Zero Carbon Strategy? Regional Spatial Plan? SUMP?

## 2.City Strategy and Plans

Key-Data, City Strategy, City Masterplan, Sectorial Plans (Transport, Housing, Climate,...) [MAPS]

## 3.Urban Regeneration Project

Project Title, Location, Background, Initiative, Stakeholders (Landowners, Residents,...), Partners  
Scale, Goals, Scope, Urban Design, Construction Programme, Costs/Benefits, Impact,  
Status/Decision Process, Time-Line, Local/Regional Acceptance [MAPS, PLANS,  
ILLUSTRATIONS]

## 4.Road Transformation Project

Project Title, Background, Initiative, Stakeholders, Partners

Scale, Goals, Scope, Road Design, Construction Programme, Costs/Benefits, Impact,  
Status/Decision Process, Time-Line, Local/Regional Acceptance [MAPS, PLANS,  
ILLUSTRATIONS]

## 5. Problems to Solve

## 6. Questions to Work On



A nighttime photograph of a large public square or plaza. In the background, a modern building with a glass facade is illuminated from within, showing some interior details. The square is filled with a large crowd of people, many of whom are wearing blue vests or clothing. There are several streetlights and trees scattered throughout the scene. In the foreground, there is a concrete structure, possibly a bridge or a walkway, with a sign that reads "PORTE DES LILAS". The overall atmosphere is one of a significant public event or protest.

Thank You!

# Discussion

[Paul.lecroart@institutparisregion.fr](mailto:Paul.lecroart@institutparisregion.fr)

PORTE DES LILAS