

# Work plan 2023

## SURE Eurodelta network group



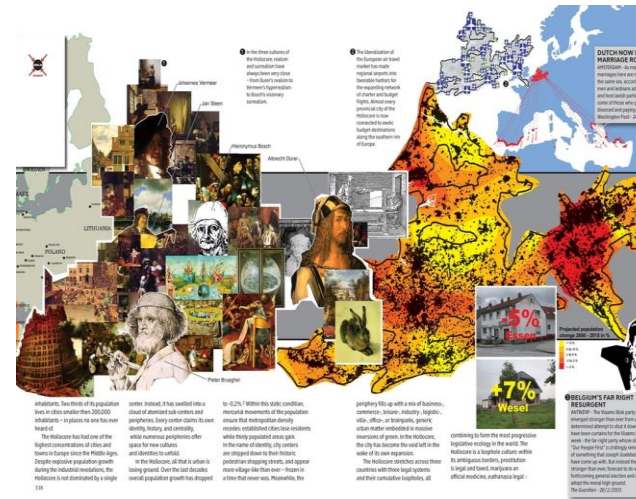
SURE  
Eurodelta

---

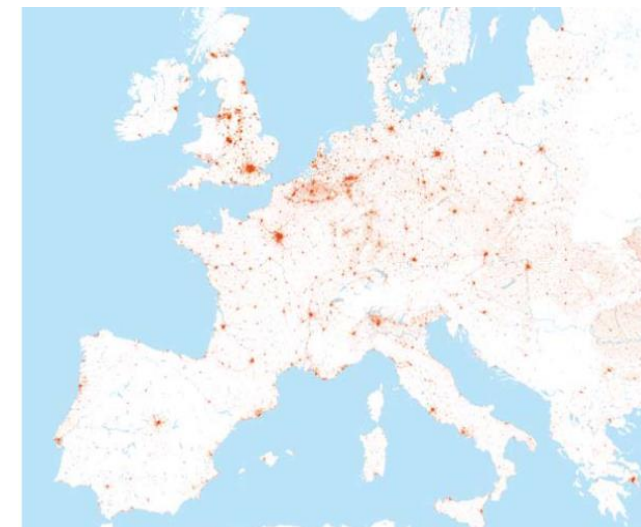
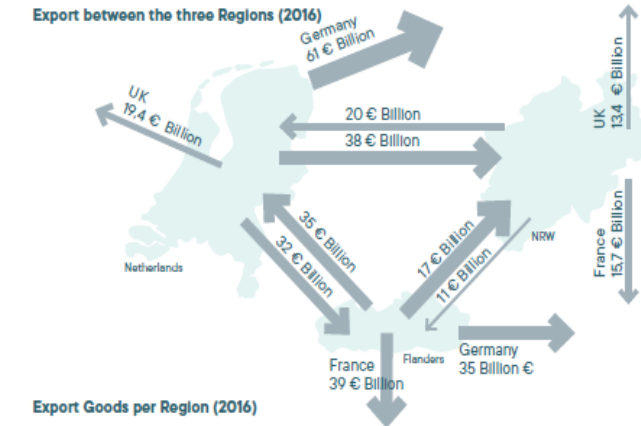
Cross-border collaboration in the Eurodelta

# One urbanized area

- 45 million people living within proximity of maximal 3-5 hours.
- Businesses are strongly connected (chains) and share the market (customers).
- Very well connected digital and mobility infrastructure. Airports, harbors.
- Rich (high percentage of GDP of Europe)
- Smart (many knowledge centers)
- Historical and cultural connections



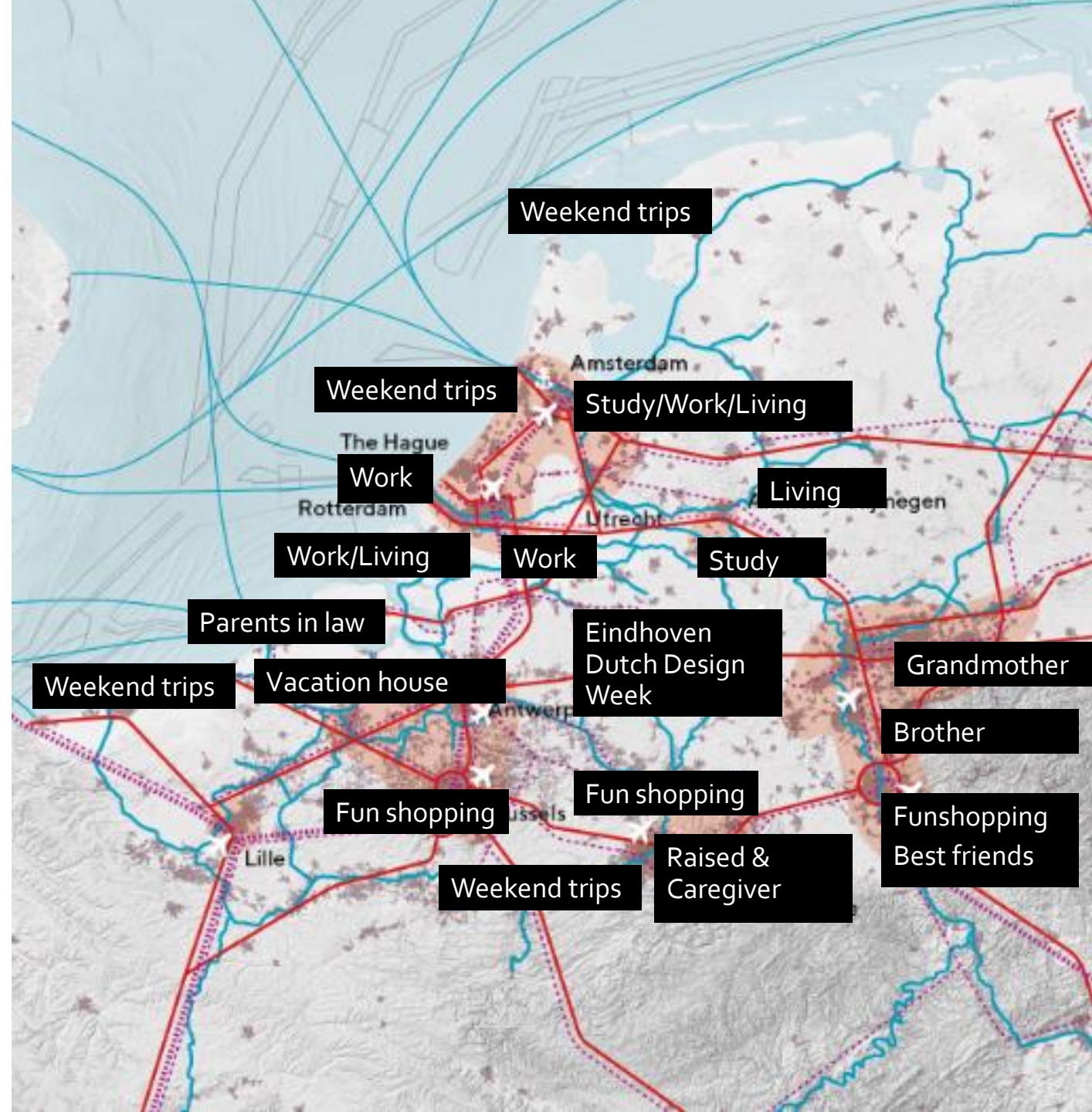
## 1. Current System



# Crossing borders

- Many of our citizens spent their life within this urban system during their career, study and as a place to live.
- Use on weekly or monthly base for business and weekend trips, for sport competitions and longer vacations.
- Have friends, family and (former) colleagues living in the area.
- Borders are sometimes an obstacle (working, social issues, traveling with public transport) sometime not (recreation, shopping, traveling by car) an obstacle for many people.

*The urban system of a  
human life cycle of a  
citizen of the Eurodelta*





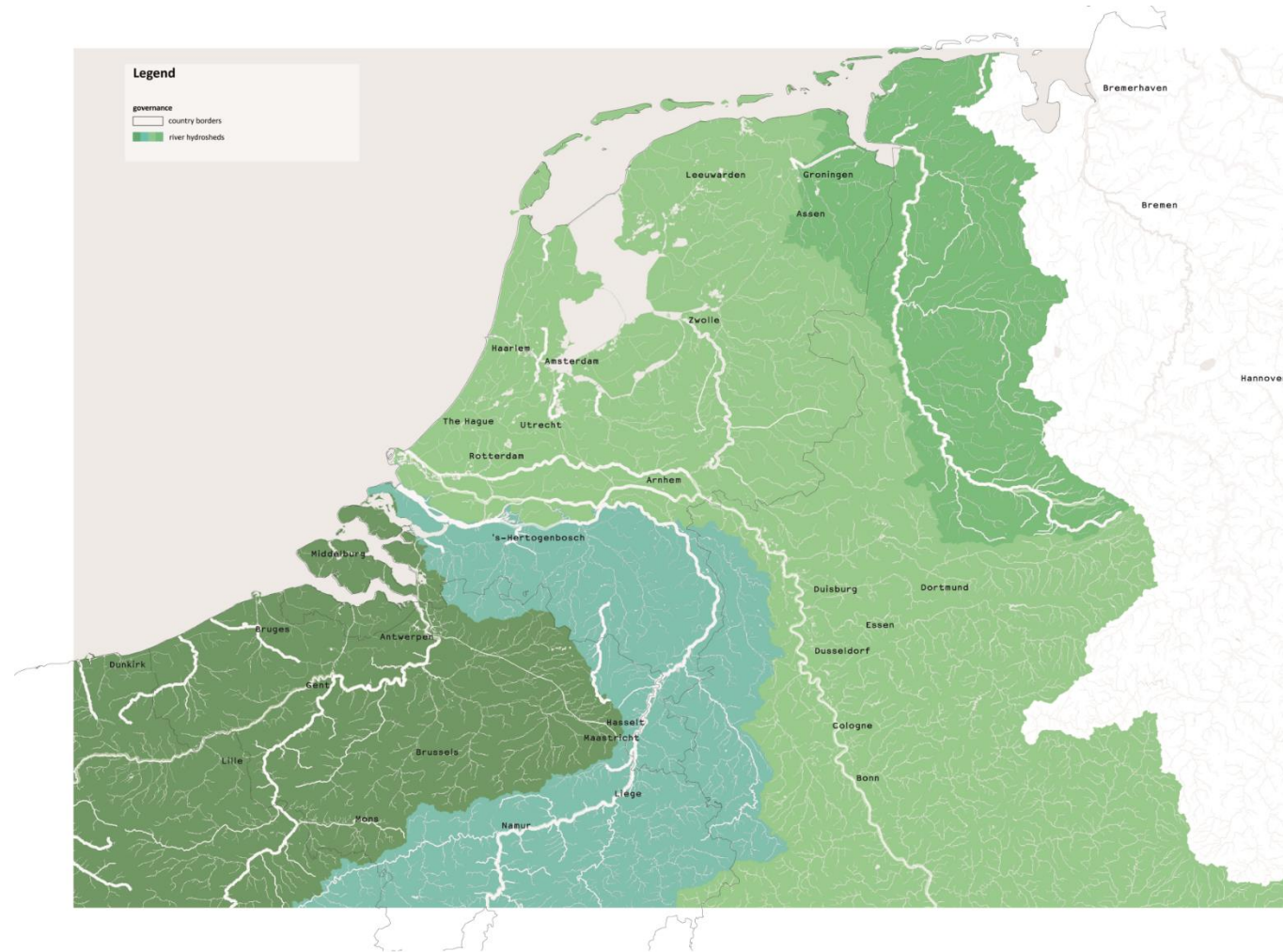
# Water connects

## One ecological system

- The region is located in the Rhine-Maas-Scheldt Delta.
- The area is one ecological system: coastlijn, flatland, transition area.

## Water is an engine for urban development:

- connecting the different stakeholders – physically (waterways), historically (harbors), cultural (portcities).
- connects to the hinterland by infrastructure (trains, roads) and trade (bringing wealth).
- is a connector to layered-urbanism
- ensures wealth, quality of life (habitat, recreation) and is a basic need (drinking water).





# The Balance is endangered

The citizens – human and non-human – of the Eurodelta face huge challenges

- Climate crisis
- Distinction (non-human)
- Growing segregation
- Change of the power on the world market
- Urbanization
- Digitalization
- Changing demographics
- Housing crisis
- Agricultural crisis
- Mental and physical health issues
- Stuck infrastructure system
- Resource crisis



Flood 2022, Germany,  
Belgium, Netherlands



Housing protest 2022  
Amsterdam



Cost of living 2022  
Brussel



Brown Coal Mining 2023  
Lützerath, Germany



Agricultural Policies 2022  
Netherlands

# The Eurodelta, balance by transition

The first sustainable, circular and equitable delta of Europe! Innovation by cross-border cooperation!

The SURE Eurodelta network group aims

- to help individual members to understand the context and the effect of their policies and actions,
- in order to implement more effective and efficient policies for the individual stakeholders.
- The actions of different individuals together will result in the restoration of the balance of the Delta by realizing an ecological, economical, and social transition.

*In 2050 the citizens - all species - of the Eurodelta will live and work comfortably, safe and healthy within the boundary of our planet. In the resilient and just Eurodelta a broad welfare is created while enhancing the beauty and livability of its cities, villages and countryside.*

# The SURE Eurodelta

## It a bottom up movement

- As experts of urban planning, sustainability, mobility and economy working at different cities and regions, research institutes and NGOs, The SURE Eurodelta is an interdisciplinary group of economists, spatial strategists, urban planners, landscape architects, experts on sustainability and European affairs
- working at local and regional governments, research institutes and non profits within the Eurodelta and its neighboring regions
- working on the acceleration of the required transitions to become the first territory of Europe that reaches the ambitions of the EU Green Deals and to implement the goals of the SDG's of the UN.

## Pioneering work

- The Eurodelta is a new scale of cross border cooperation with the goal of transformation of the region.
- Therefore the stakeholders do pioneering work by crossing borders – national borders, sectoral borders, and institutional borders.
- The stakeholders are curious, creative, enterprising and persistent,
- To explore new ways of collaboration by activistic actions on the short term and strategic work long term.

## Exploring many paths

- By developing and sharing knowledge of policies, projects, research and innovations.
- By innovation, experimentation and up-scaling,
- By raising awareness and behavioral change of the need of transformation through storytelling and education.
- By capacity building for lobby and knowledge development
- Through collaboration with relevant stakeholders.
- By developing a shared agenda for the different stakeholders,
- By aligning policies and implementing the results of the work in their own institutions.



# Agenda 2023

## Understanding the concept of Macroregions and the SURE Eurodelta

The SURE Eurodelta is not the first macroregion in Europe. But it differs by the bottom-up approach from cities and regions. The pioneering efforts also ask cities to think differently, understand the macroregional potential, and to position themselves in this huge area.

The work is done in collaboration with the Benelux Union +.

In 2022-23 we continue our work on the understanding macroregions:

- By connecting with other macroregions and the EU
- By inviting experts
- By working on 4 projects
- By involving research institutes.

## Building the network

The SURE Eurodelta is an informal network within Metrex. The network wants to grow within all countries to have an equal balance between members.

Members can be cities, region's, research institutes and NGO's.

In 2022-23 we continue our work of expanding and strengthening the network by

- Connecting with new partners
- Collaboration with other networks and institutions
- Sharing knowledge
- Starting projects
- Doing projects.



# Agenda 2023

## Working group: The Connected Delta: Smart Mobility Transition

Mobility and infrastructure are one of the key building stones of a spatial economic strategy. We continue our work to create a healthy, smart, affordable, circular and fast transport system (in and between cities and regions) that enables responsible transport of passengers and resources.

In 2019-2020 we finalized the ESPON STISE research in which we learned that mobility is growing and that bold measures are required to reach the EU targets of the EU Green Deal. In 2023 we make the step from theory to implementation.

In 2022-23 we continue our work of the ESPON STISE research

- by continuing to spread the results of the report
- by implementing the policy recommendations in our own policies.
- by inspiring other through our commitment and example.
- by developing a shared agenda
- by sharing knowledge and best practices
- by scaling up of initiatives.

Inspired by the discussions of the ASSET project in 2022 we explore how the infrastructure system that is created for a linear economy has to transform create a circular transport system.

We incorporate in our further research also transport on water as one of the distinguishing factors of the SURE Eurodelta.

## Working group: The Circular Delta: Smart Circular Transition

The global population continues to grow rapidly, with increasing demand for raw materials, while supplies are decreasing. The stakeholders of the SURE Eurodelta aim to create the first circular Delta by reducing the import of construction materials into the Eurodelta.

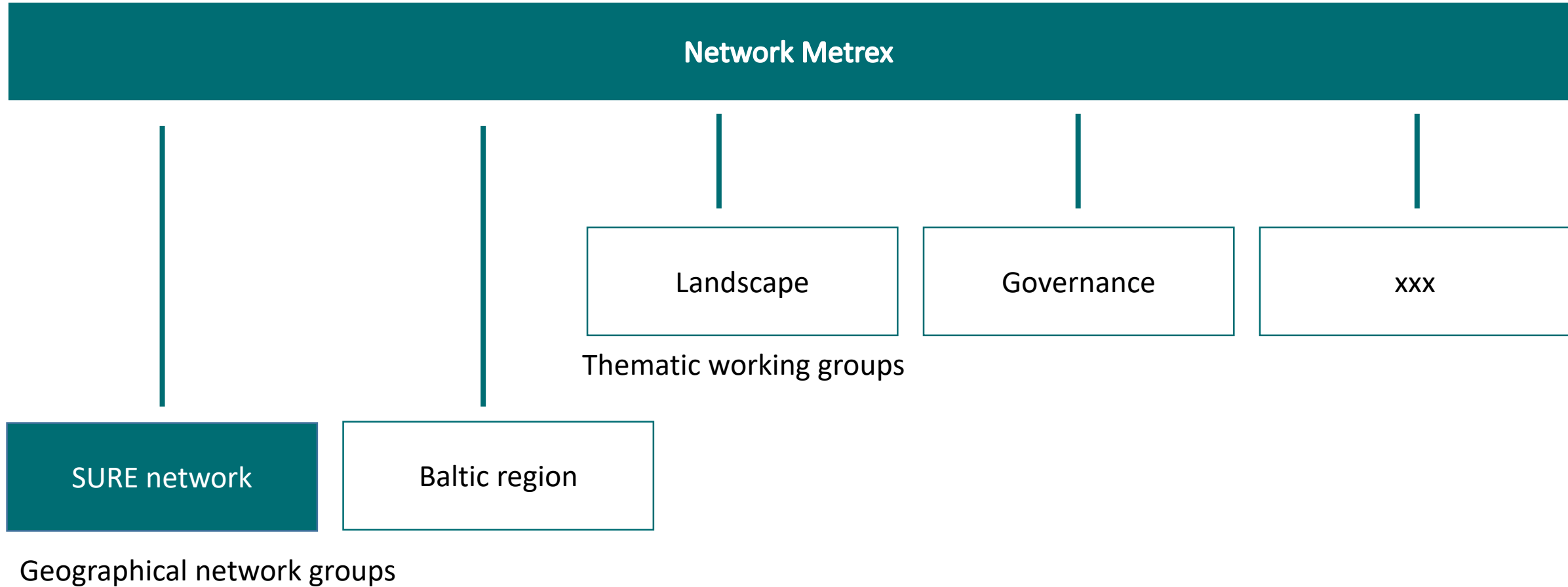
Pioneering on the scale of the macroregion, the stakeholders aim to develop a method to accelerate this transition starting with one value chain: the creation of a circular construction sector. Cities and regions stand for a huge challenge of building new housing, to renovate a big percentage of the existing housing stock, demolition, the building/restoration of new infrastructure, public spaces and industrial areas and to facilitate the needs of the energy transition to build wind mills and solar panels. Cities and regions are key stakeholders in this transition. They have the power to stimulate innovation and facilitate upscaling. While explore how circular economy gives us the tools to tackle climate change and biodiversity loss together, we focus also on addressing important social needs. We explore how the new economy contributes to grow prosperity, jobs, and resilience at the same time.

In 2023 we will continue our work

- By starting a new research in which we combine a top-down and bottom-up approach to understand the required framework for the circular economy and to help to accelerate the transition.
- By sharing knowledge
- By accelerating the transition by building networks and to help scaling up of innovations.

# Part of the Metrex network

SURE is part of the Metrex network – European network of metropolitan regions – but open to all cities and regions within the SURE Eurodelta.



# Informal Network Organization

## In 2023

We will take steps to realize a more balanced representation of different governments and universities by expanding with new members.

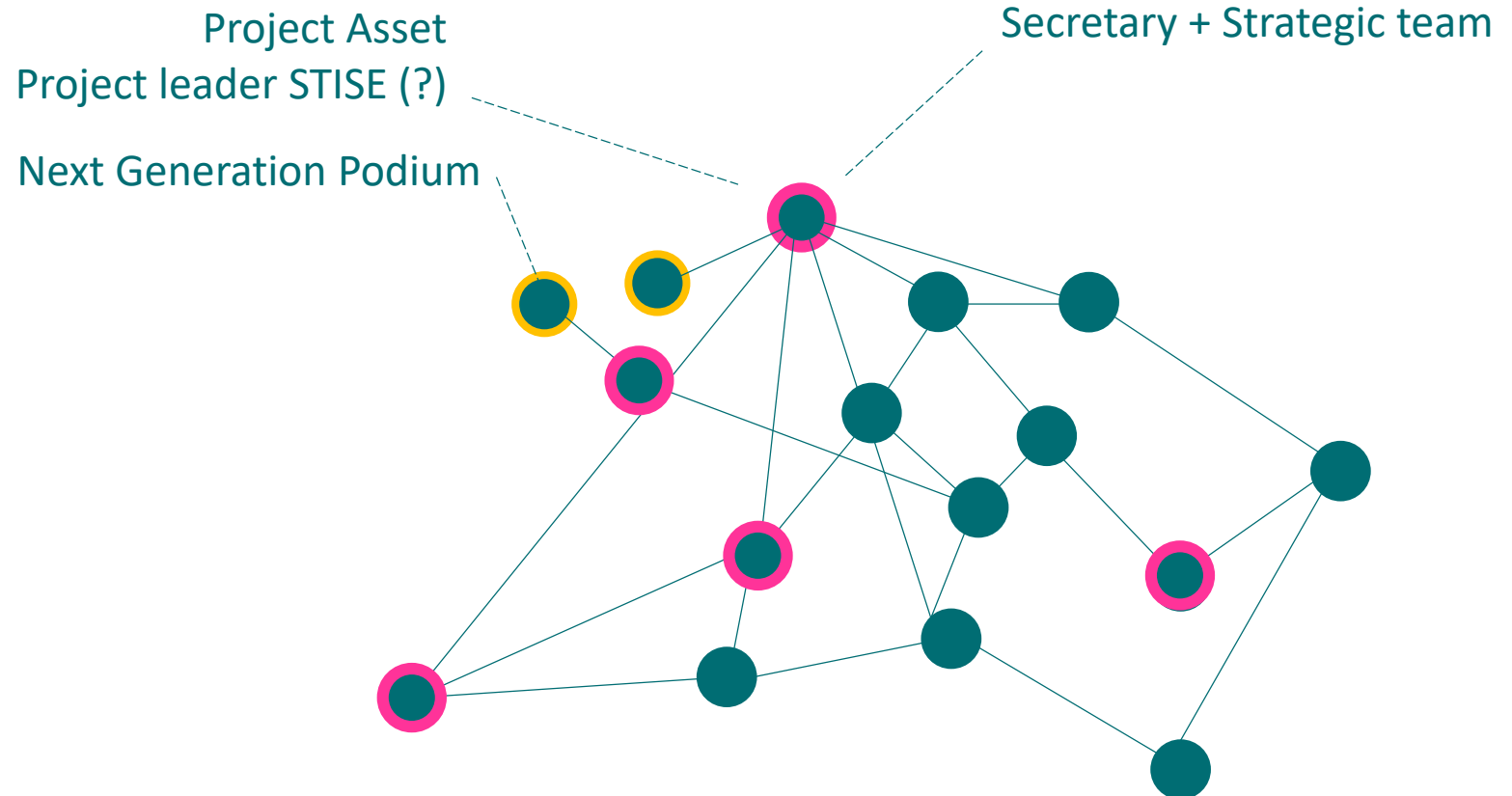
Strengthen political commitment and visibility of the network group by signing of an agreement (summer 2023) and by organizing public events.

Strengthen the connection between different stakeholders (academia) en the community of practice (cities and regions).

Strengthen the thematic agenda of the network by starting new thematic working groups.

Strengthen the connections between working groups and understand the context of the work by organizing joint events.

Take the first steps of formalization: starting a strategic team that explores different forms of network organization, and financing.





# Different roles

## Eurodelta Secretary

- Facilitates meetings
- Network building
- Communication

## 1<sup>st</sup> layer Strategic team (new)

- Developing strategy, work plan and monitoring
- Understanding Marcoregional concept
- Strengthening network
- Europe – lobby & projects
- Scaling up
- Participate in meetings
- Preparing summer conference

## 2nd layer Active members

- Representatives of their cities
- Participate in meetings
- Input for work plan
- Supporting activities of the network

## 3<sup>rd</sup> layer Observers

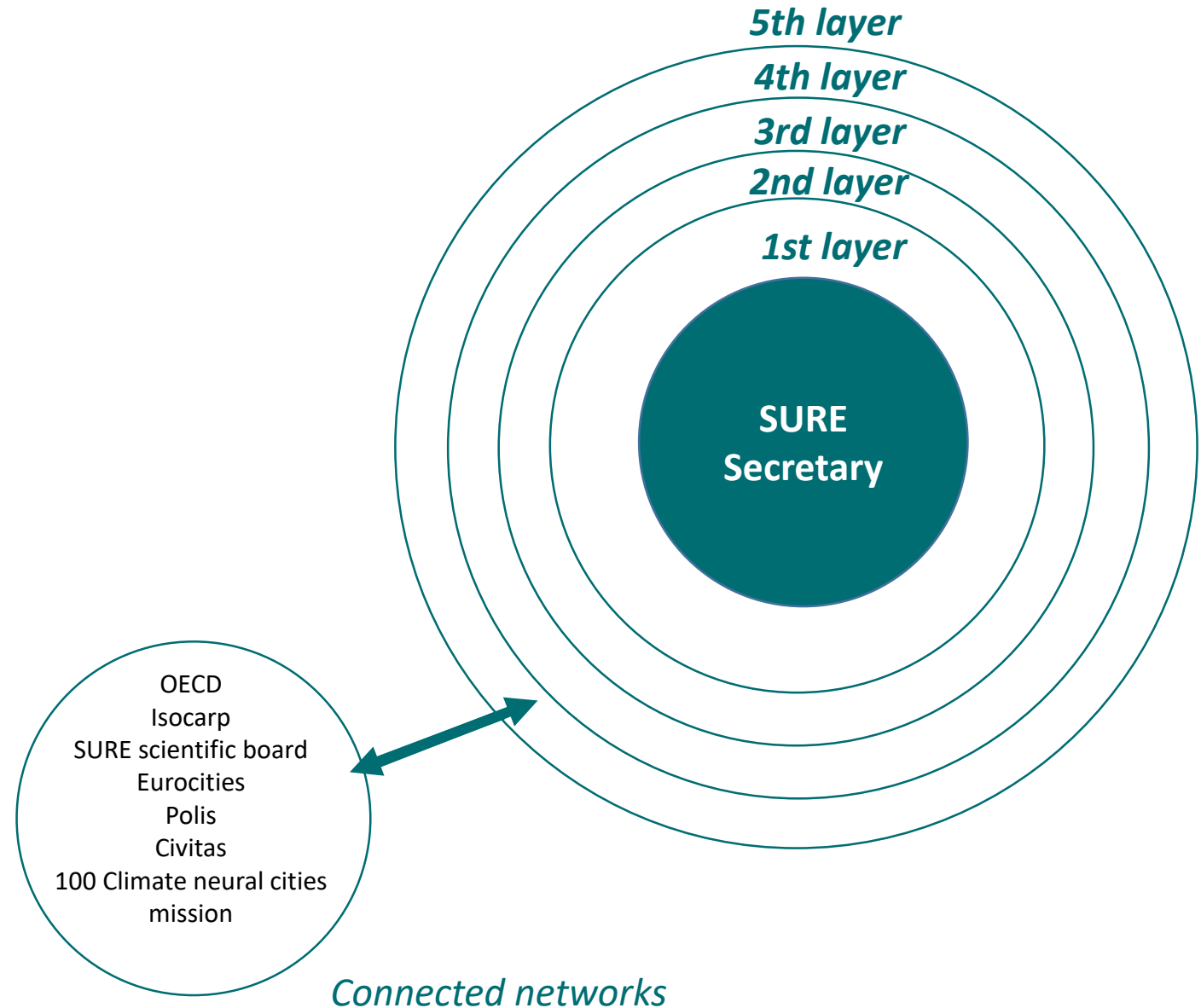
- Representatives of their cities
- Follow activities

## 4<sup>th</sup> layer: experts participating in projects

- Work plan
- Knowledge development
- Lobby
- Network building
- Participate in meetings

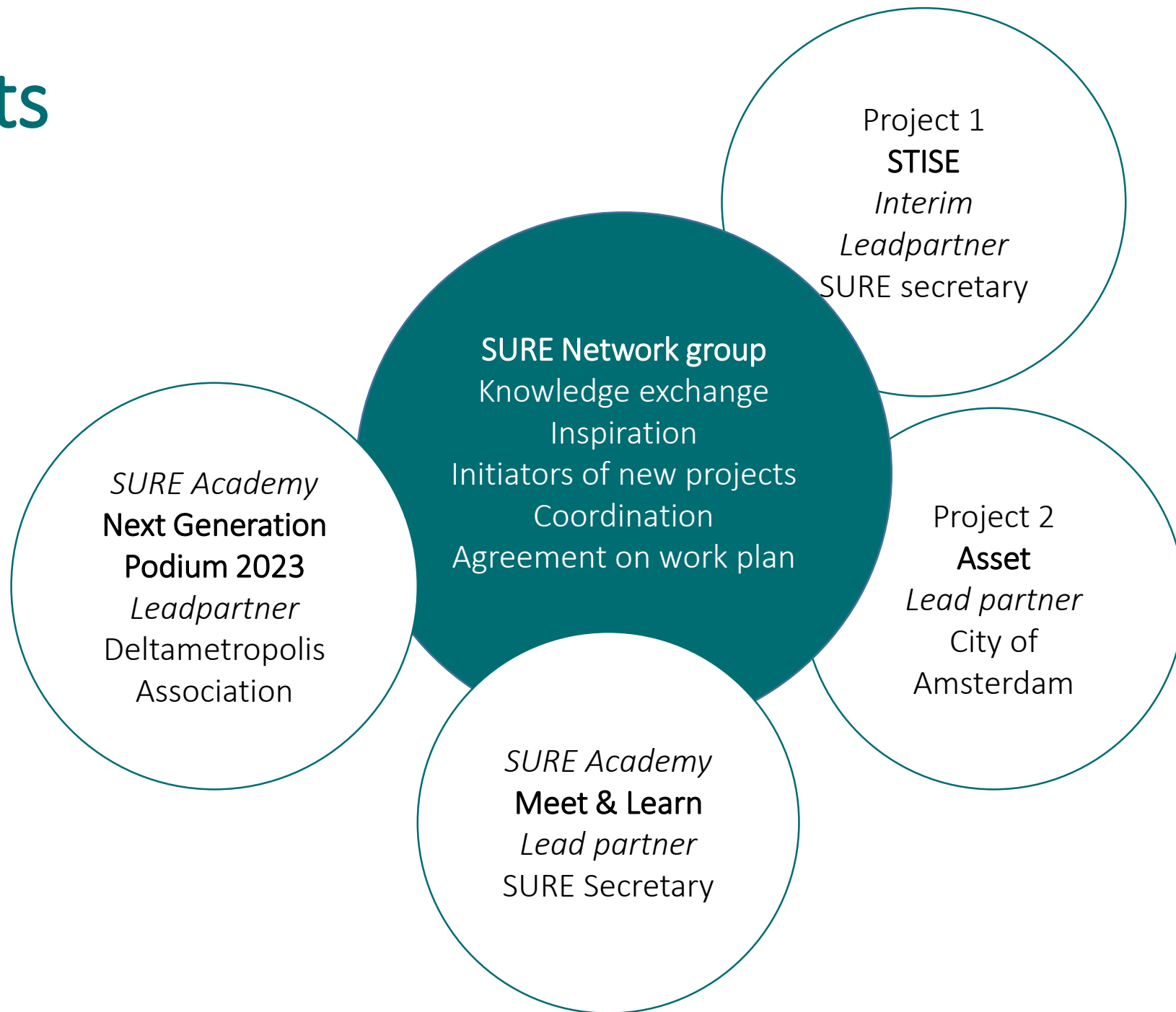
## 4<sup>th</sup> layer Colleagues, Universities, Experts...

- Knowledge exchange



Secretary	Proposal strategic team (based on logo's webpage, green) & active members	Observers (based on mailing list)
<b>City of Amsterdam</b> <ul style="list-style-type: none"> <li><i>Erik Pasveer</i></li> <li><i>Dagmar Keim</i></li> <li><i>Mirte Kortbeek</i></li> </ul>	<b>Belgium</b> Brussels capital region <b>France</b> European Metropole of Lille <b>Germany</b> Rhineland metropole <b>Netherlands</b> City of Amsterdam City of Den Haag Province of South Holland Regio Parkstad	<b>Belgium</b> Regio Vlaanderen City of Gent City of Liège City of Antwerpen <b>Germany</b> Business Metropole Rhein Ruhr City of Düsseldorf Regional Verband Ruhr <b>Nederland</b> City of Rotterdam Groene metropoolregio Arnhem-Nijmegen

# Projects





Stise (stakeholders) > working group mobility SURE (first interest)	Next Generation (most active)	Asset (in development)
<ul style="list-style-type: none"> <li>Province of South Holland</li> <li>Brussels capital region</li> <li>European Metropole of Lille</li> <li>Rhineland metropole</li> <li>City of Amsterdam</li> <li>Metropolitan Region of Amsterdam</li> <li>City of Den Haag</li> <li>Regional Verband Ruhr</li> <li>Province of Gelderland</li> <li>Canal zone Ghent</li> <li>Region of Flanders</li> <li>SURE secretary</li> </ul> <p>Working group mobility (possible members)</p> <ul style="list-style-type: none"> <li>Parkstad</li> <li>Province of South Holland</li> <li>Brussels capital region</li> <li>Amsterdam</li> <li>Breda (HvA)</li> <li>Den Hague</li> </ul>	<p>NGO's</p> <p><i>Deltametropolis Association &amp; Braun-Urban (lead)</i></p> <p><b>Governments</b></p> <ul style="list-style-type: none"> <li>City of Amsterdam</li> <li>City of Den Haag</li> <li>Province of South Holland</li> <li>Brussels capital region</li> </ul> <p><b>SURE Scientific Board</b></p> <ul style="list-style-type: none"> <li>Carola Hein, TU Delft</li> <li>Christa Reicher, RWTH Aachen</li> <li>Hans Leifeld, KU Leuven</li> </ul>	<ul style="list-style-type: none"> <li>City of Amsterdam (lead)</li> <li>Brussels capital region</li> <li>European Metropole of Lille</li> <li>Province of South Holland</li> <li>Metropolitan Region of Amsterdam</li> <li>City of Den Haag</li> <li>Business Metropole Rhein Ruhr</li> <li>Deltametropolis Association</li> <li>...</li> </ul> <p>Associated:</p> <ul style="list-style-type: none"> <li>Willem van Winde, HvA</li> <li>Peter Aasche, Sla Architecten</li> <li>Ton Venhoeven, Venhoeven CS</li> <li>TNO</li> </ul>

# Meetings in 2023

## **SURE Secretary**

Once a week staff meeting

- Tuesday morning 10-11.00

## **Strategic team**

Every 2 months

- 3 February, Friday 10-11.30 (online)
- 24 April 2023 – Wrocław (Metrex, live)
- 30 June 2023, Friday 10-11.30 (online)
- Fall 2023 (Metrex conference, live)
- 1 December 2023, Friday 10-11.30 (online)

## **SURE network meetings – all members**

2 x a year (within the Eurodelta region > different hosts)

- 19 January 2023, Heerlen (live)
- June Summer (?) (live)

**SURE conference – broad event with political involvement (together with Secretary of the Benelux)**

- Summer 2023, Amsterdam (live)

## **SURE Next Generation Podium – universities**

- 20-23 March and Mei (week of 18 May)
- Working group meetings (follows)

## **Meet and learn – every month**

- Friday 12.00-13.00 (online)

## **Working group meeting Mobility /STISE (new)**

- Own planning

## **Working group meeting Circular space/Asset**

- Own planning

# Are you interested to join our movement?

Visit our website:

<https://sure-eurodelta.eurometrex.org/>

Follow us on [LinkedIn](#)

Sent an email: [info@sure-eurodelta.eu](mailto:info@sure-eurodelta.eu)