



METREX

The Network of European Metropolitan Regions and Areas

31 May–2 June 2017

METREX Spring Conference

Themes

Planning for Social Cohesion
EU Strategies and Programmes in a Regional Context

Hosts

Stockholm County Council

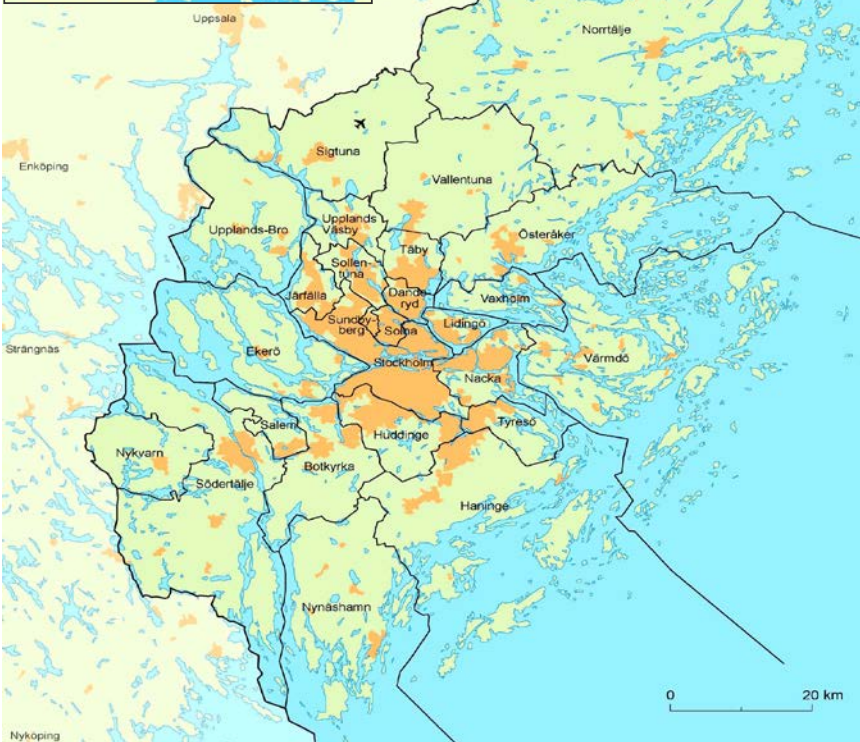


METREX

METREX is The Network of European Metropolitan Regions and Areas. It was founded in 1996 at the Glasgow Metropolitan Regions Conference, supported by local authorities and government bodies in the West of Scotland and DG Regio of the European Commission. Its purpose is the exchange of information, knowledge, understanding and experience in metropolitan affairs but with a core interest in spatial planning and development. It now has Members from some 50 of the major metropolitan areas in Europe. Details can be found at www.eurometrex.org. METREX holds biannual conferences and works through expert groups and projects on issues of common member interest.

Stockholm County Council

The Stockholm County Council is responsible for all publicly-financed healthcare, public transport, cultural subsidies and regional planning in Stockholm County. Greater Stockholm is Sweden's leading region and financial centre. Today, the region attracts people from other countries, visitors and investors. It ranks highly in terms of quality of life – public health is good and the level of education is high.



The Stockholm Region

One County – 26 Municipalities

- 2.3 million inhabitants
- 1 million dwellings
- 6 500 km², 180 km N–S
- The biggest municipality is Stockholm, approximately 920 000 inhabitants
- Annual population growth approximately 38 000 at present
- Population density:
 - County 343 inhabitants/km²
 - Stockholm municipality 4 461 inhabitants/km²
- A monocentric region, large rural areas (60% forest & agriculture)
- Good public transport
- A unique system of regional greens wedges, and a rich blue system

Wednesday 31 May

Networking Day

Networking Venue

World Trade Center Stockholm

Programme

10.00–11.50

Nordic Network

Room: Hong Kong

12.00–14.00

METREX Managing Committee Meeting

Room: Hong Kong

12.00–14.00

Snack Lunch

14.00–17.00

METREX Expert Group: Baltic Space

Room: Washington

16.00–18.00

METREX Expert Group: Metropolitan Governance

Room: Hong Kong

19.30–21.30

Reception, World Trade Center, second entrance

Conference Venues



World Trade Center Stockholm, Klarabergsviadukten 70 (main entrance, pictured above), Kungsbron 1 (second entrance, pictured on last page)

Wednesday and Friday



Operaterassen at Operakällaren, Karl XII:s torg

Thursday

Thursday 1 June	The Stockholm Day: Planning for Social Cohesion
<i>Conference Venue</i>	<i>Operaterassen at Operakällaren</i>
Registration	
8.30–9.00	Registration
Programme	
9.00–9.15	Welcome and Introduction
	<ul style="list-style-type: none"> Gustav Hemming, Stockholm County Council Irma Karjalainen and Kurt Mittringer, Vice-Presidents of METREX
<i>Moderator</i>	<i>Cecilia Garne</i>
9.15–9.35	Social Cohesion – a Challenge for Metropolitan Regions
	<ul style="list-style-type: none"> Franc Weerwind, Mayor of Almere, Netherlands
9.35–9.55	Socio-economic Segregation in European Capital Regions, the Stockholm Case
	<ul style="list-style-type: none"> Roger Andersson, University of Uppsala
9.55–10.15	Urban Space and Social Sustainability
	<ul style="list-style-type: none"> Ann Legeby, Royal Institute of Technology
<i>10.15–10.45</i>	<i>Coffee Break</i>
10.45–11.05	Cohesive Stockholm
	<ul style="list-style-type: none"> Paul Alarcon, City of Stockholm Niklas Svensson, City of Stockholm
11.05–11.35	Regional Planning for the Stockholm Region – RUFs 2050
	<ul style="list-style-type: none"> Hanna Wiik, Stockholm County Council Ulrika Palm, Stockholm County Council
11.35–12.20	Peer Review on RUFs 2050
	<ul style="list-style-type: none"> Planners from Amsterdam, Vienna, Oslo and Helsinki Ilona Mansikka, Uusimaa Peter Austin, Oslostad/Akershus Camiel van Drimmelen, Amsterdam Kurt Mittringer, Wien
12.20–12.30	Summing Up
<i>12.30–14.00</i>	<i>Lunch</i>
14.00–18.00	Study tours to Sub cores and Areas of Socio-economic Segregation
	<ul style="list-style-type: none"> North: Visiting Kista, Järfälla and Barkarby South: Visiting Södertälje, Botkyrka and Alby
<i>Dinner Venue</i>	<i>Eriks Gondolen</i>
19.30	Conference Dinner



Eriks Gondolen, Stadsgården 6

Friday 2 June	METREX Day: EU Strategies and Programmes in a Regional Context
Conference Venue	World Trade Center
Moderator	Cecilia Garne
Programme	Morning Session
9.00–9.15	Introduction and Welcome
	<ul style="list-style-type: none"> • Dr. Nicola Schelling, President of METREX
9.15–9.30	Macro-regional Strategies – a Concern for Regions
	<ul style="list-style-type: none"> • Odd Godal, DG Regio
9.30–9.45	Visions and Strategies around the Baltic Sea
	<ul style="list-style-type: none"> • Jacek Zaucha, VASAB
9.45–10.00	City Regions in a Macro Regional Context
	<ul style="list-style-type: none"> • Lukas Smas, Nordregio
10.00–10.15	TEN-T Core Network Corridors
	<ul style="list-style-type: none"> • Jörg Saalbach, The Interregional Alliance for the Rhine-Alpine Corridor
10.15–10.40	Regional Examples
	<ul style="list-style-type: none"> • Malla Paajanen, Uusima • Adriana May, Lombardia • Ewa Balanicka, Mazovia
10.40–10.55	<i>Coffee Break</i>
10.55–11.40	Workshop on Implementing EU strategies in Regional Planning
	<ul style="list-style-type: none"> • Working Groups joined by speakers above
11.40–12.25	Feedback and Discussion
	<ul style="list-style-type: none"> • Panel with Franc Weerwind, Odd Godal and Irma Karjalainen
12.25–12.30	Closing Words
	<ul style="list-style-type: none"> • Dr. Nicola Schelling, President of METREX
12.30–13.30	<i>Lunch</i>
	Afternoon Session: METREX affairs
13.30–14.10	METREX Business Strategy
	<ul style="list-style-type: none"> • Henk Bouwman, Secretary General Metrex
14.10–14.30	Bernd Steinacher Fellowship
	<ul style="list-style-type: none"> • Nicole Kirchberger, Bernd Steinacher Fellow 2015/2016 report • Presentation of 2016/2018 Bernd Steinacher Fellow
14.30–15.00	Closing Conference and Invitation to Helsinki Conference Autumn 2017
	<ul style="list-style-type: none"> • Henk Bouwman, Secretary General Metrex



METREX The Network of European Metropolitan Regions and Areas

Autumn 2017 METREX Helsinki Autumn Conference

Themes Living in the Future Metropolis

Contacts Conference Contacts

METREX Contact

- Tim Page
Head of Secretariat, METREX

Phone and Fax 00 44 (0) 7887 511992
E-mail tim.page@eurometrex.org

Host Contact

- Hans Brattström
Stockholm County Council

Phone 0046 (0)70-002 88 05
E-mail hans.brattstrom@sl.se

Registration

- METREX members and other participants can register and download hotel information through the METREX website at www.eurometrex.org.

Deadline for Conference Registration – 14 May



Conference Hotel (see also METREX website)

- Comfort Hotel Stockholm, World Trade Center
Address: Kungsbron 1, 111 22 Stockholm
Phone: +46 8 566 222 00 | Fax: +46 8 566 224 44
E-mail: co.stockholm@choice.se
www.choice.se

This hotel is adjacent to the confereens venue, and offers singelrooms at the price of 1 595 SEK per night, breakfast included.

Please make your reservation by calling or sending an e-mail to the hotel, before 30 April.

When making your reservation, state the code **2030GR007043**.

- If you choose to stay at another hotel for your conference visit, we recommend you choose one located close to Vasagatan.

Conference Venues

- World Trade Center, main entrance
- Comfort Hotel and World Trade Center, second entrance
- Operaterassen, Operakällaren

Restaurants

- Eriks Gondolen

Transportation

- Arlanda Express
- Stockholm Central Station

