

**METREX**  
The **network** of  
European Metropolitan Regions and Areas



**METREX**

The Network of European Metropolitan Regions and Areas

**14-16 May 2014**

**METREX Central Germany Spring Conference**

**Theme**

Planning and sustainability in a time of financial crisis

**Host**

Metropolregion of Central Germany



*Skyline Leipzig (Photo -Michael Bader)*

Metropolregion of Central Germany

Chemnitz  
Dessau-Rosslau  
Gera  
Halle  
Jena  
Leipzig  
Zwickau

14-16 May 2014

Central Germany Spring Conference

Theme

Planning and sustainability in a time of financial crisis

Host

Central German Metropolregion



Chemnitz Theaterplatz, Opera  
Kunstsammlung Chemnitz

#### Administrative bodies of the Central German Metropolitan Region

Cooperative operations within the Central German Metropolitan Region take place at four levels, a process in which flat hierarchies and a high proportion of direct and informal communication between the participants enable targeted and flexible action.

The polycentric nature of the Central German Metropolitan Region and the large geographical area it covers represent special challenges to the participants and their cooperation. In particular this concerns the effective use and management of existing resources, as well as the integration of a wide variety of heterogeneous identities, potentials and interests on a partnership basis. ([www.region-mitteldeutschland.com](http://www.region-mitteldeutschland.com))



Dessau-Rosslau Bauhaus-Building

#### Flexible and consensus-based cooperation

The principles of voluntary commitment, decision-taking on a consensual basis and variable geometry which apply at all levels of the Central German Metropolitan Region are in line with this approach, and ensure efficient working processes and transparent communication between all those involved. The administrative bodies of the Central German Metropolitan Region act strictly in accordance with the principle of subsidiarity only in task areas which individual members or districts are unable to carry out or carry out adequately on the basis of their own resources. In this way it can be ensured that the cooperation within the Central German Metropolitan Region leads to real added value for the region as a whole.

#### Chemnitz - The power of modernity

From the city where the "Made in Germany" seal of quality originated to a modern industrial and cultural metropolis: in Chemnitz, the third-largest city in eastern Germany, the past and the future meet in an atmosphere of creative tension. Chemnitz lies in the heart of eastern Germany's most heavily industrialised region. In a number of rankings the city is regularly awarded the accolade of being one of the most dynamic in Germany.



Gera, Hofwiesenpark

#### Dessau-Rosslau - Bauhaus, Elbe and the Gartenreich

Dessau-Rosslau can pride itself on no less than three UNESCO natural and cultural world heritage sites. However, this twin city on the Elbe and Mulde rivers has much more to offer. The Federal Department of the Environment is also located here. Today the main features of Dessau-Rosslau as an industrial location are mechanical engineering and vehicle construction, the building industrie and pharmaceuticals.



Halle (Saale) Burg Giebichenstein

#### Gera - The Otto Dix city

Family-friendly and innovative. Gera is not just a magnet for fans of Otto Dix but also - as confirmed by the Federal Ministry of Family Affairs - a great place to live. Companies in the optical, high-precision mechanics, plastics, mechanical engineering, vehicle production and automobile supply industries as well as environmental technology products provide a future-oriented mixtures of industrie.

#### Halle (Saale) - Clever thinkers on the banks of the Saale

From city of salt to ideas factory: the biggest city in Saxony-Anhalt puts its trust in knowledge-based structural change and an ever-increasing quality of life. The riches of this city consist of economic innovation. This is confirmed by Martin Luther University of Halle-Wittenberg, the German Academy of Sciences Leopoldina, the castle of Giebichenstein Halle College of Art and Design and the Weinberg Campus, eastern Germany's second-largest technology park.

<b>METREX</b>	<b>The Network of European Metropolitan Regions and Areas</b>
14-16 May 2014	Central Germany Spring Conference
<b>Theme</b>	<b>Planning and sustainability in a time of financial crisis</b>
<b>Host</b>	<b>Central German Metropolregion</b>
 <p><i>Jena Skyline</i></p>  <p><i>Zwickau Town Hall</i></p>	<p>From city of salt to ideas factory: the biggest city in Saxony-Anhalt puts its trust in knowledge-based structural change and an ever-increasing quality of life. The riches of this city consist of economic innovation. This is confirmed by Martin Luther University of Halle-Wittenberg, the German Academy of Sciences Leopoldina, the castle of Giebichenstein Halle College of Art and Design and the Weinberg Campus, eastern Germany's second-largest technology park.</p> <p><b>Jena - The city of light between history and high-tech</b></p> <p>Since the days of Carl Zeiss, Ernst Abbe and Otto Schott light has been an focus of everything in Jena. Today the city with its knowledge base is the leading innovation centre in Europe for technology. There is hardly any other location where a future-oriented economy, cutting-edge research institutes, a 450 year old university, a high quality of life and a beautiful natural surroundings complement one another to the same extent as in Jena.</p> <p><b>Leipzig - The hub at the heart of Europe</b></p> <p>For centuries trade and change have been an integral part of the history of Leipzig. In the city with the world's oldest trade fair, the peaceful revolution in the GDR had its beginnings in 1989. Today Leipzig is the key to the new EU states in central and eastern Europe. The largest city in Saxony is more than ever a hub for the global exchange of goods, information and services. The trade fair site is one of the most modern in Europe. The Leipzig/Halle international airport is the European air hub of DHL, the Deutsche Post freight subsidiary, and the centre of Central Germany as a logistics region. Around the airport companies with worldwide operations such as Amazon, Schenker, Porsche and BMW have established themselves. Thanks to companies and institutions such as the European Energy Exchange (EEX), BIO CITY Leipzig and the Central German Broadcasting (Mitteldeutscher Rundfunk MDR) station Leipzig has in addition developed into an attractive location for the energy industry, biotechnology and the media.</p> <p><b>Zwickau - City of automobiles</b></p> <p>To the present day the history of Zwickau as an economic location is closely linked to the name of August Horch who began producing automobiles here in 1904 and create a new branch of industry. The Volkswagen Sachsen GmbH the largest manufacturing company in eastern Germany is continuing this great automobile tradition to the present day.</p>
<b>Population</b>	 <p>Central Germany - 8.7 million Member cities - 1.4 million</p>
<b>Economy</b>	Central Germany - €195 billion Member cities - €42 billion
<b>Structure</b>	7 cities 3 Federal States Area - 2097 square kilometres Population density - 1076 inhabitants per km <sup>2</sup>
	<b>Metropolregion of Central Germany</b>



<b>METREX</b>	<b>The Network of European Metropolitan Regions and Areas</b>
<b>14-16 May 2014</b>	<b>Central Germany Spring Conference</b>
<b>Theme</b>	<b>Planning and sustainability in a time of financial crisis</b>
<b>METREX</b>	
	<p>METREX is The Network of European Metropolitan Regions and Areas. It was founded in 1996 at the Glasgow Metropolitan Regions Conference, supported by Local Authorities and Government bodies in the West of Scotland and DG Regio of the European Commission. Its purpose is the exchange of information, knowledge, understanding and experience in metropolitan affairs but with a core interest in spatial planning and development. It now has Members from some 50 of the major metropolitan areas in Europe, including the City of Brussels. METREX holds biannual Conferences and works through Expert Groups and Projects on issues of common interest. Details are at <a href="http://www.eurometrex.org">www.eurometrex.org</a></p>
<b>Wednesday 14 May 2014</b>	<b>Networking Day</b>
<b>Networking Venue</b>	<p>New Town Hall / Neues Rathaus  Martin-Luther-Ring 4-6  04109 Leipzig  Room 171, Room 260 and  Room 270</p>
<b>Programme</b>	<b>METREX Central Germany Spring 2014 Conference</b>
<b>11.00 - 13.00</b>	<b>Nordic Network - Room 270</b>
<b>13.00-14.00</b>	<i>Snack lunch</i>
<b>14.00 - 16.00</b>	<b>Expert Groups - Room 260 URMA - Room 270 TERRACOTTA - Room 171 ENHANCE</b>
<b>16.00 - 18.00</b>	<b>Expert Groups - Room 260 EconoMETREX - Room 171 InfraMETREX</b>
<b>16.00 - 18.00</b>	<b>METREX Managing Committee Meeting - Room 270 New Town Hall</b>
<b>19.30 - 21.30</b>	<b>Reception</b>
	
	<p><i>New Town Hall Leipzig  (Photo - Andreas Schmidt)</i></p>

<b>Thursday 15 May 2014</b>	<b>Central Germany Day</b>
<b>Theme</b>	<b>Cooperation between Metropolitan Regions and the economic sector</b>
<b>Conference Venue</b>	New Town Hall / Neues Rathaus Martin-Luther-Ring 4-6 04109 Leipzig Room 258 (Sitzungssaal) / Obere Wandelhalle
<b>Programme</b>	<b>METREX Central Germany spring 2014 Conference</b>
<b>9.00 - 9.20</b>	<b>Welcome and Introduction</b>
	<ul style="list-style-type: none"> <li>Dr. Nicola SCHELLING, President of METREX</li> </ul> <b>Politicians Metropolregion of Central Germany</b> <ul style="list-style-type: none"> <li>Dr. Albrecht SCHRÖTER, Mayor of the City of Jena and Head of the Management Board of the Metropolregion of Central Germany</li> </ul> <i>Moderator Herr Dr. Rolf Barnim FOTH</i>
<b>9.20 - 9.50</b>	<b>Introduction</b>
	<ul style="list-style-type: none"> <li>Prof. Dr. Andreas SUCHANEK, Dr. Werner Jackstädt Chair of Economic and Business Ethics, Leipzig Graduate School of Management HHL</li> </ul>
<b>9.50 - 10.20</b>	<b>Central German Metropolitan Region and the close cooperation with the Industrial Initiative for Central Germany</b>
	<ul style="list-style-type: none"> <li>Jörn-Heinrich TOBABEN, CEO of the Metropolregion of Central Germany</li> </ul>
<b>10.20 - 10.50</b>	<b>Central Europe Project CITY REGIONS - Another example of economic cooperation</b>
	<ul style="list-style-type: none"> <li>Reinhard WOLPERT, Head of the Office of the Metropolregion of Central Germany</li> </ul>
<i>10.50 - 11.10</i>	<i>Coffee and tea</i>
<b>11.10 - 11.40</b>	<b>Cooperation of the Rhine-Neckar metropolitan region and the economy</b>
	<ul style="list-style-type: none"> <li>Ralph SCHLUSCHE, CEO Metropolregion Rhein-Neckar GmbH</li> </ul>
<b>11.40 - 12.10</b>	<b>Cooperation of the Nuremberg metropolitan region and the economy</b>
	<ul style="list-style-type: none"> <li>Dr. Christa STANDECKER, Managing Director, Nuremberg Metropolitan Region Office</li> </ul>
<b>12.10 - 12.40</b>	<b>The triple helix of Amsterdam - Public Sector, Economy and Universities</b>
	<ul style="list-style-type: none"> <li>Ton JONKER (Amsterdam Economic Board)</li> </ul>
<i>12.40 - 13.30</i>	<i>Discussion</i>
<i>13.30 - 14.30</i>	<i>Lunch</i>
<b>14.30 - 18.30</b>	<b>Site visits</b>
	Changing landscapes after brown coal mining (Leipzig New Lakeland) and the Automotive industry (BMW-Plant Leipzig) in the Metropolitan Region Central Germany
<b>Conference Dinner Venue</b>	<b>Leipzig Cotton Spinning Mill / Baumwollspinnerei Leipzig</b>
<b>19.30 - 22.00</b>	<b>Conference Dinner</b>
Leipzig Cotton Spinning Mill Baumwollspinnerei Leipzig Halle 14 Spinnereistraße 7 04179 Leipzig	
	Location Conference Dinner Halle 14 Leipzig Cotton Spinning Mill

<b>Friday 16 May 2014</b>	<b>METREX Day</b>
<b>Themes</b>	Part 1 - Territorial Scenarios and Visions for Europe Part 2 - Planning and Sustainability in the time of financial crisis
<b>Conference Venue</b>	New Town Hall / Neues Rathaus Martin-Luther-Ring 4-6 04109 Leipzig Room 258 (Sitzungssaal) / Obere Wandelhalle, Room 171, Room 260 and Room 270
<b>Programme</b>	<b>METREX Central Germany spring 2014 Conference</b>
9.00 - 9.15	<b>Address by the new President of METREX</b>
	<ul style="list-style-type: none"> <li>Dr. Nicola SCHELLING, Regionaldirektor, Verbandregion Stuttgart</li> </ul>
9.15 - 11.00	<b>Part 1 - Territorial Scenarios and Visions for Europe</b>
9.15 - 9.45	<b>ESPON - Territorial Vision for Europe towards 2050</b>
	<ul style="list-style-type: none"> <li>Andreu ULIED, Lead Partner, Mcrit Ltd.</li> </ul>
9.45 - 10.15	<b>ECTP - Fifteen steps towards Territorial Cohesion</b>
	<ul style="list-style-type: none"> <li>Jan VOGELIJ, Former President of the ECTP</li> </ul>
10.15 - 10.30	<b>METREX - EU Vision, Framework and Action Plan</b>
	<ul style="list-style-type: none"> <li>Roger READ and Tim PAGE, METREX Secretariat</li> </ul>
10.30 - 11.00	<b>Discussion</b>
	<ul style="list-style-type: none"> <li>Roger READ, METREX Secretary General</li> </ul>
11.00 - 11.30	<i>Coffee and tea</i>
11.30 - 12.00	<b>The Metropolitan Dimension in the USA</b>
	<ul style="list-style-type: none"> <li>Ms. Penny GROSS, Chair of the Northern Virginia Regional Commission (NVRC) President of the National Association of Regional Councils (NARC)</li> </ul>
12.00 - 13.00	<b>Part 2 - Planning and Sustainability in the time of financial crisis</b>
12.00 - 12.30	<b>Keynote Address - The meaning of a green economy</b>
	<ul style="list-style-type: none"> <li>Andrew SIMMS, Fellow of the New Economics Foundation, London</li> </ul>
12.30 - 13.00	<b>Discussion</b>
	<ul style="list-style-type: none"> <li>Dr. Nicola SCHELLING, President of METREX</li> </ul>
13.00 - 14.00	<i>Lunch</i>
14.00 - 16.00	<b>World Café - Current affairs</b>
	<p>The World Café works as a process of active and stimulating exchange between colleagues on issues of current interest to Members. Over the two hours of the Café colleagues can change tables every 30 minutes and have the opportunity to explore the range of issues on offer for discussion.</p> <p><i>Tea and coffee available during the World Café</i></p> <p><b>Introduction World Café</b></p> <p>The World Café has been devised by METREX Vice President Juliane Kürschner who will give an introduction to the proceedings.</p> <p><b>World Café</b></p> <p>Four café tables hosted and moderated, each with a Rapporteur. Language services. (see related World Café programme for details)</p>
16.00 - 16.15	<b>Invitation to the METREX Brussels Autumn 2014 Conference</b>
	<i>Close of Conference and delegates depart</i>

<b>14-16 May 2014</b>	<b>METREX Conference</b>
<b>Conference Venue</b>	New Town Hall / Neues Rathaus Martin-Luther-Ring 4-6 04109 Leipzig Room 258 (Sitzungssaal) / Obere Wandelhalle
<b>Programme</b>	<b>METREX Brussels Autumn 2014 Conference</b>
<b>Themes</b>	<b>A sustainable European economy? - The metropolitan contribution</b>
<b>Contacts</b>	<p><b>Central German Metropolregion</b></p> <ul style="list-style-type: none"> <li>Jan OPITZ Office of the Central Metropolitan Region Schillerstraße 5 04109 Leipzig</li> </ul> <p>Tel and Fax      +49 (0) 341 600 1621 / 1613 E-Mail            <a href="mailto:jan.opitz@region-mitteldeutschland.com">jan.opitz@region-mitteldeutschland.com</a></p> <p><b>METREX and the Conference hotel</b></p> <p><b>METREX contact</b></p> <ul style="list-style-type: none"> <li>Tim PAGE METREX Communications 125 West Regent Street Glasgow G2 2SA</li> </ul> <p>Tel and Fax      00 44 (0) 1292 317074 E-mail            <a href="mailto:tim.page@eurometrex.org">tim.page@eurometrex.org</a></p> <p><b>Registration</b></p> <ul style="list-style-type: none"> <li>METREX Members and other participants can register and download hotel information through the METREX website at <a href="http://www.eurometrex.org">www.eurometrex.org</a></li> </ul>
<b>Deadline for Conference Registration</b>	<b>Friday 18 April 2014</b>
<b>Conference hotels</b>	(see also METREX website)
	<ul style="list-style-type: none"> <li> <p><b>Hotel Adagio</b> Seeburgstraße 96 04103 Leipzig</p> <p>Phone            +49 (0) 341 21 66 90 E mail            <a href="mailto:mail@hotel-adagio.de">mail@hotel-adagio.de</a> Web                <a href="http://www.wb.adaqiohotel.de/wb/">http://www.wb.adaqiohotel.de/wb/</a></p> <p>10 rooms Rate of 85 € per night for single occupancy with breakfast included. Please use the Codeword "METREX" for the reservation. From Central Station Leipzig take the Tram 4 (Direction Stötteritz) up to Johannisplatz or Tram 15 (Direction Meusdorf) up to Gutenbergplatz Distance Hotel to Conference Venue 1.000 meter</p> </li> <li> <p><b>Hotel und Residenz Leonardo</b> Windscheidstraße 21 - 23 04277 Leipzig</p> <p>Phone            +49 (0) 341 30 33 0 E mail            <a href="mailto:info@hotel-leonardo.de">info@hotel-leonardo.de</a> Web                <a href="http://www.hotel-leonardo.de">www.hotel-leonardo.de</a></p> <p>10 rooms Rate of 125 € per night for single occupancy with breakfast included. Please use the Codeword "METREX" for the reservation From Central Station Leipzig take the Tram 10 (Direction Löbñig) or or Tram 11 (Direction Markkleeberg Ost) up to Connewitzer Kreuz Distance Hotel to Conference Venue 2.900 meter (Take the Bus 89 (Direction Hauptbahnhof) up to Neues Rathaus</p> </li> </ul>

14-16 May 2014

METREX Conference

Programme

METREX Brussels Autumn 2014 Conference

Themes

A sustainable European economy? - The metropolitan contribution

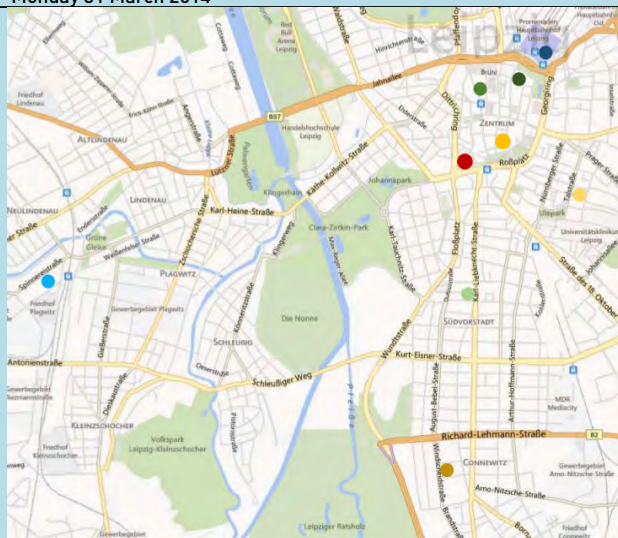
Conference hotels

(see also METREX website)

- Hotel Via City**  
Karl-Liebknecht-Straße 40  
04107 Leipzig  
  
Phone +49 (0) 341 211 3305  
E mail [info@via-city.de](mailto:info@via-city.de)  
Web [www.pension-leipzig.de/city/index.html](http://www.pension-leipzig.de/city/index.html)  
  
5 rooms Rate of 59 € per night for single occupancy with breakfast included.  
5 rooms Rate of 69 € per night for single occupancy with breakfast included.  
4 rooms Rate of 89 € per night for single occupancy with breakfast included.  
Please use the Codeword "METREX" for the reservation  
From Central Station Leipzig take the Tram 10 (Direction Löbniß) or  
or Tram 11 (Direction Markkleeberg Ost) up to Südplatz  
Distance Hotel to Conference Venue 800 meter
- Hotel Fregehaus**  
Katharinenstraße 11  
04109 Leipzig  
  
Phone + 49 (0) 177 776 15 96  
E mail [kontakt@hotel-fregehaus.de](mailto:kontakt@hotel-fregehaus.de)  
Web <http://hotel-fregehaus.de>  
  
10 rooms Rate of 116 € per night for single occupancy with breakfast included.  
Please use the Codeword "METREX" for the reservation  
From Central Station Leipzig 10 minutes to walk  
Distance Hotel to Conference Venue 700 meter
- Park Hotel Seaside**  
Richard-Wagner-Str. 7  
04109 Leipzig  
  
Attention: It is not possible to book directly at the hotel!  
If you would like to stay at the Park Hotel Seaside please send an E-Mail until  
March, 28th 2014 to [nklein@eventlab.org](mailto:nklein@eventlab.org)  
with your booking details. Please note that we will need your credit card details to  
confirm your reservation.  
  
Web [www.parkhotelleipzig.de/](http://www.parkhotelleipzig.de/)  
  
36 rooms Rate of 110 € per night for single occupancy with breakfast included.  
From Central Station Leipzig 5 minutes to walk  
Distance Hotel to Conference Venue 1.000 meter

Deadline for hotel reservations

Monday 31 March 2014



- Central Station
- Conference Venue  
New Town Hall  
Martin-Luther-Ring 4-6  
04109 Leipzig
- Conference Venue  
Office Central German Metropolitan Region /  
Metropolregion Mitteldeutschland  
Schillerstraße 5  
04109 Leipzig
- Conference Dinner Venue  
Leipzig Cotton Spinning Mill /  
Baumwollspinnerei Leipzig  
Halle 14  
Spinnereistraße 7  
04179 Leipzig
- Park Hotel Seaside  
Richard-Wagner-Straße 7  
04109 Leipzig
- Hotel Fregehaus  
Katharinenstraße 11  
04109 Leipzig
- Hotel Via City  
Karl-Liebknecht-Straße 40  
04107 Leipzig
- Hotel und Residenz Leonardo  
Windscheidstraße 21 - 23  
04277 Leipzig
- Hotel Adagio  
Seeburgstraße 96  
04103 Leipzig

Locations Conference Venue, Conference Dinner Venue, Central Station, Hotels



**Friday 16 May 2014 METREX Day**

**Themes** Part 1 - Territorial Scenarios and Visions for Europe  
Part 2 - Planning and Sustainability in the time of financial crisis

**Conference Venue**

New Town Hall / Neues Rathaus  
Martin-Luther-Ring 4-6  
04109 Leipzig  
Room 258 (Sitzungssaal) / Obere Wandelhalle, Room 171, Room 260 and Room 270

**Programme METREX Central Germany spring 2014 Conference**

**13.00 - 14.00 Gathering - METREX Solidarity**

The Gathering will enable an open and informal discussion with colleagues from Southern Europe hosted by the President and the Secretary General

**14.00 - 16.00 World Café - Current affairs**

The World Café works as a process of active and stimulating exchange between colleagues on issues of current interest to METREX Members. Over the two hours of the Café colleagues can change tables every every 30 minutes and have the opportunity to explore the range of issues on offer for discussion

**14:00 - 14:15 Introduction World Café**

The World Café has been devised by METREX Vice President Juliane Kürschner who will give an introduction to the proceedings.

*Tea and coffee will be available during the World Café*

**14:15 - 16:15 World Café**

	Table 1 - Room 270	Table 2 - Room 260	Table 3 - Room 171	Table 4 - Room 258
--	--------------------	--------------------	--------------------	--------------------

<b>Discussion themes</b>	Sustainability - How can economic collaboration in metros contribute to sustainable development throughout the region?	Governance in metropolitan areas - What can we learn from OECD research?	Growth and shrinkage in in regions - What are the challenges that regions are facing?	Role of strategic planning - How can spatial planning be effective/be carried out in times of economic crisis?
--------------------------	--	--	---	--

<b>Table hosts</b>	Markus EGERMANN	Abel SCHUMANN	François DUGENY	Alberto LEBOREIRO
<b>Moderator</b>	Thomas KIWITT	Juliane KURSCHNER	Julian JANSEN	Gianfranco FIORA
<b>Rapporteur</b>	Kurt MITTRINGER	Joost van IERSEL	Hans BRATTSTROM	Magda SEGKOUNI

<b>Language services</b>	DE translation		FR translation	ES translation IT translation
--------------------------	----------------	--	----------------	----------------------------------

**Guests** METREX colleagues will proceed as groups from one table to another over the two hour World Café