

# Wroclaw

<http://www.wroclaw.pl/urzad-miejski-wroclawia>

## Study of conditions and directions of spatial Wroclaw

Study of conditions and directions of spatial Wroclaw is a document defining directions of spatial policy of the municipality.

The study findings are binding in the preparation of local development plans do not constitute a legal basis to issue administrative decisions.

## Selected Directions

### Directions zoning - functional and spatial structure

shows a system 19 types of urban complexes, or areas that are wyodrębniające a fully functional and spatial or are of a homogeneous characteristics of zoning boundaries distribution area of commercial buildings with a floor area exceeding 2000 m<sup>2</sup> and areas reduce the formation of retail establishments, service centers, poles Science and Innovation, elements of the transport system, forms of nature protection, and the protection and development of the environment.

### Directions of spatial development - transport system

shows the basic layout of the road transport network, comprising motorways, streets Express, streets main class of accelerated motion, the main and bulk; location of parking places interchanges in the system, Park & Ride; mileage of railway lines, stations and railway stations, the airport and the airport terminals business location, location location of ports and marinas and alternative provision for a new river port.

### Directions of spatial development - public transport

shows m. al. the course of railway and tramway lines and the planned links between them, a business location airport terminals, bus stations, railway stations and bus stops, parking lots, loop tram stops vaporetto.

### Directions of spatial development - protection and environmental development

shows a system of green and open, which form teams urban green riverside, recreation, cemetery, cultural, as well as parks, public gardens, lawns, water bodies exist in other urban teams.

### Directions of spatial development - protection of cultural heritage

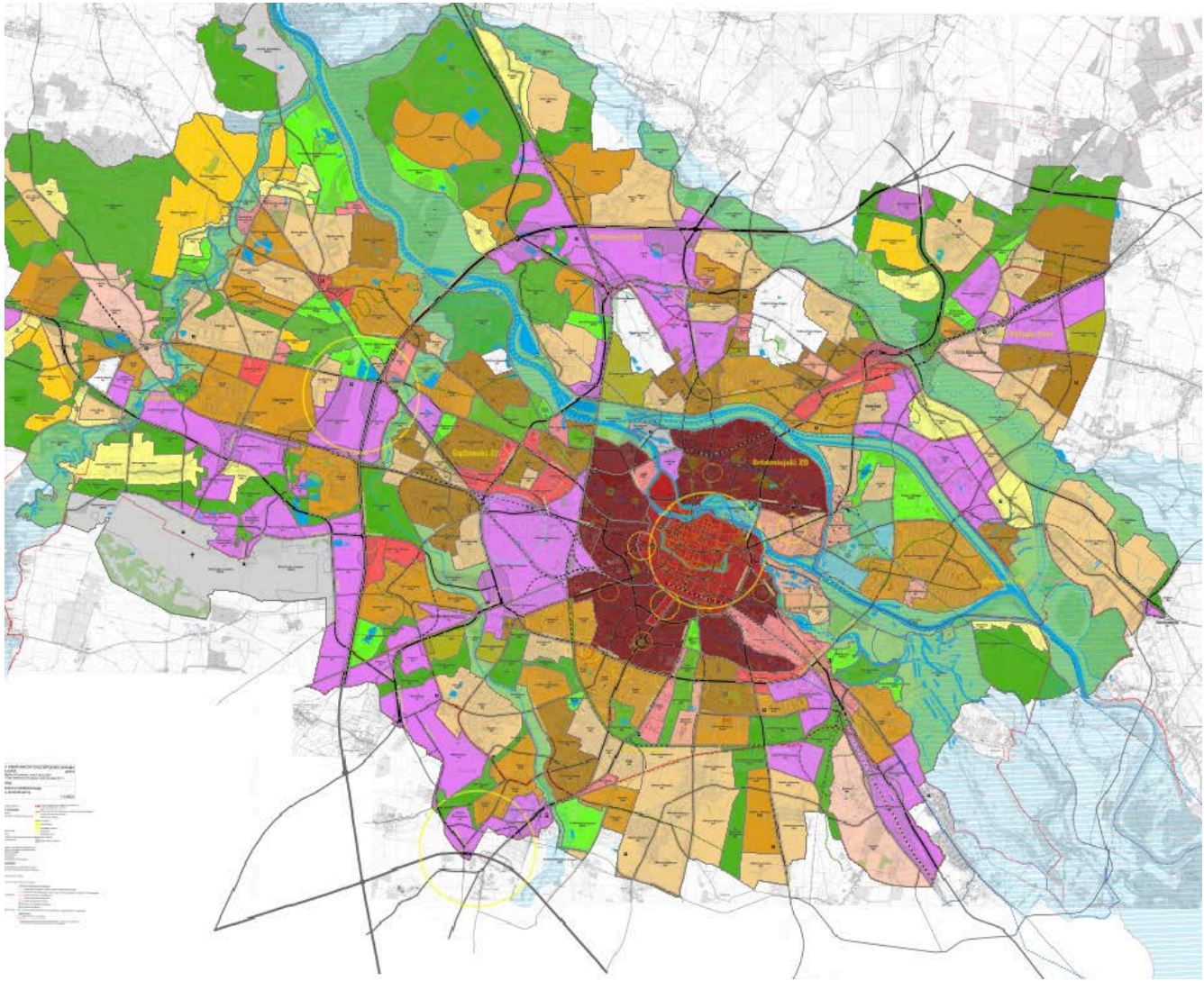
presents the planned conservation protection zone and areas of cultural heritage protected under separate regulations, for example. Entered in the register of protected monuments or the power of understanding of local development plans.

### Directions of spatial development - issues of realization

shows the areas, which is subject to local zoning plans, areas for which it is planned to draw up such plans, areas on which there are public purpose investment location and boundaries of the closed areas.

### Directions of spatial development - areas in need of rehabilitation

shows the areas in need of material renovating, upgrading, additions, and the exchange of construction and development. stations and second degree, as well as fuel base and the planned high-pressure fuel pipeline.



Wrocław land use plan - from the Wrocław GIS system