

# Uusimaa Region

[http://www.uudenmaanliitto.fi/en/regional\\_council](http://www.uudenmaanliitto.fi/en/regional_council)

## Regional land use aims

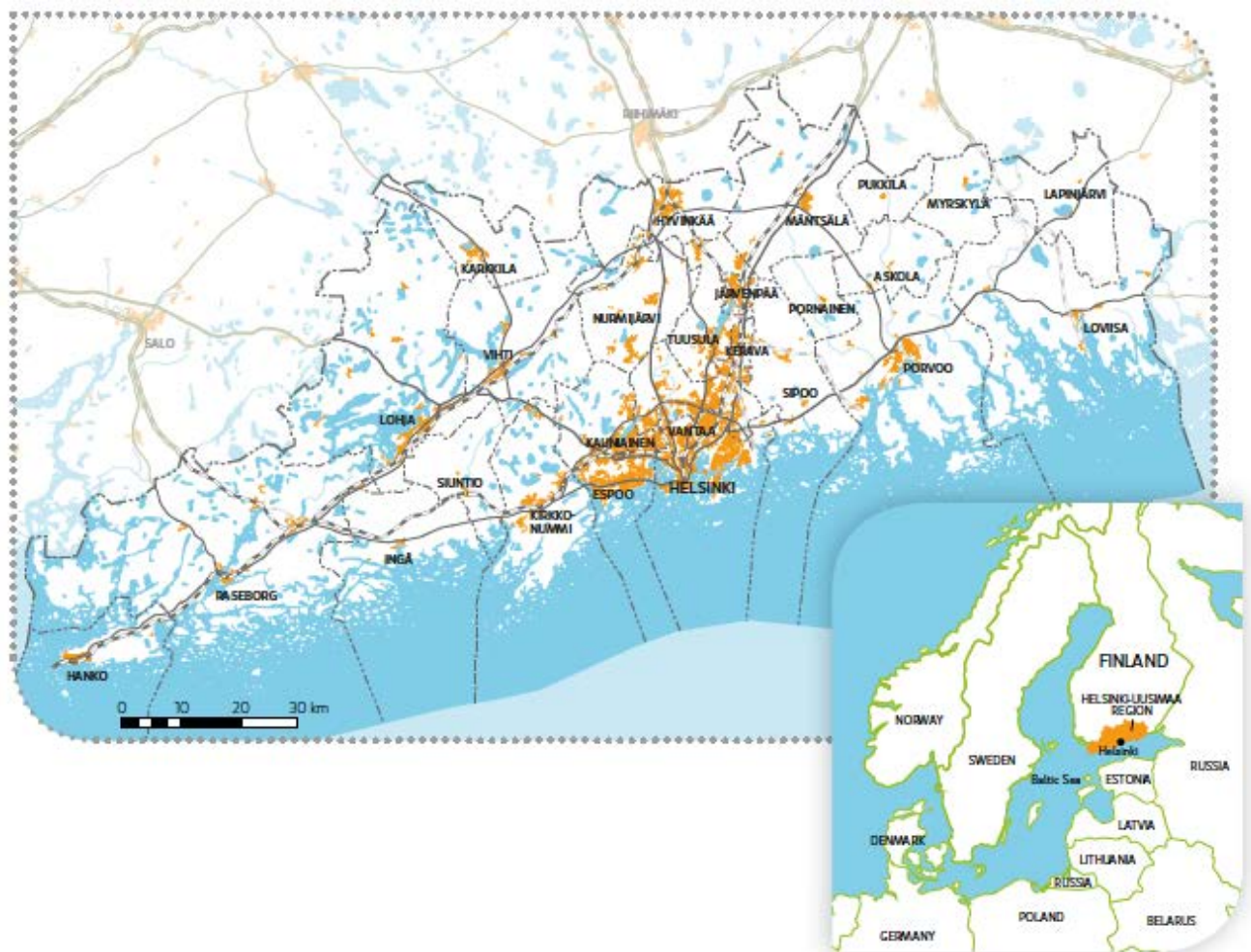
A well-functioning and coherent urban structure  
Seamless traffic arrangements  
decreasing emissions  
Good terms and conditions for trade and business  
Sufficient recreational areas  
An ecological sustainability

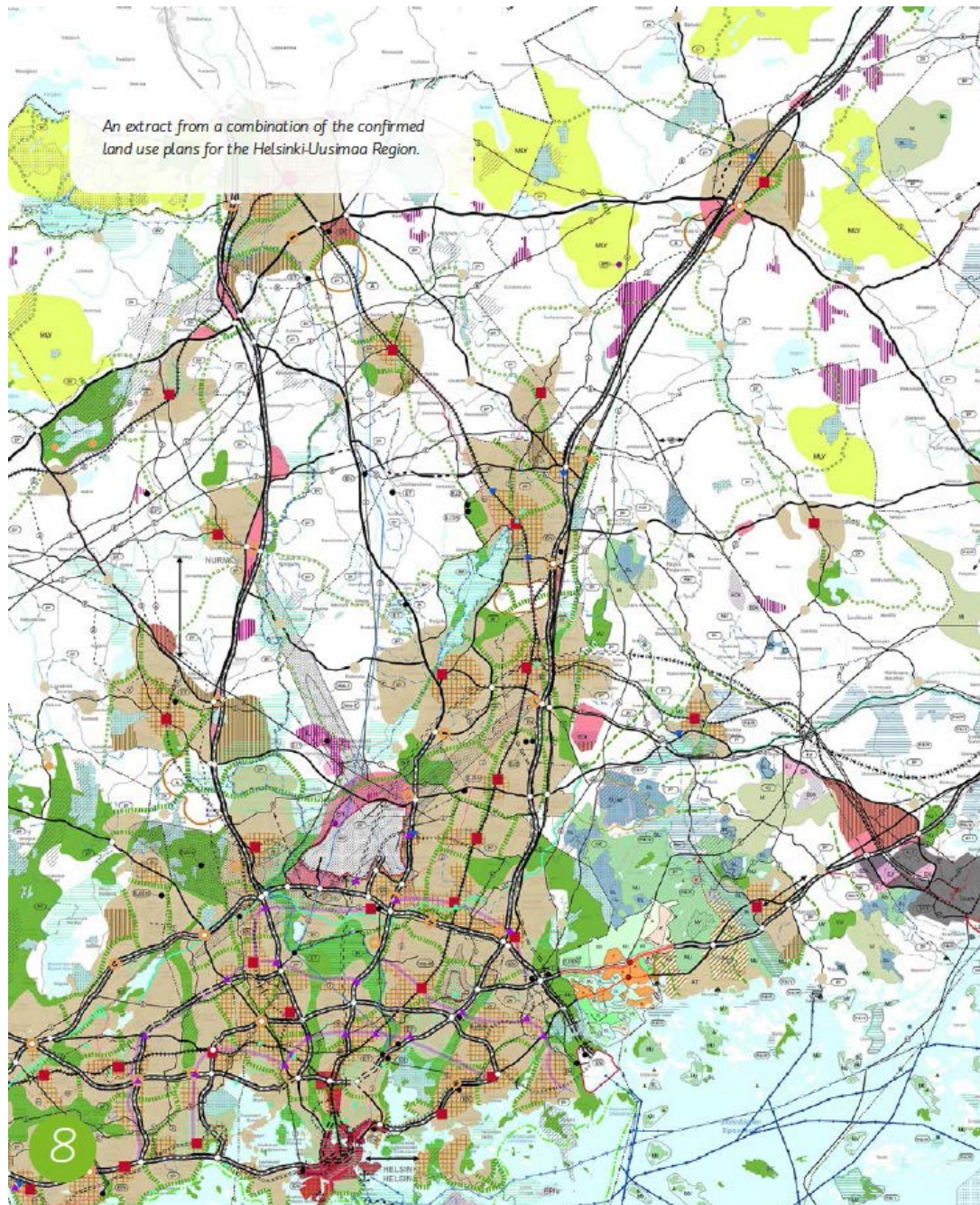
## Regional land use planning

The regional land use planning helps to steer the everyday life: where to locate the housing, work places, services and green areas, how can the traffic flow smoothly and where are the cultural heritage sites?

The regional land use plan has an overall character and aims at the future; it is made for the whole region. The entirety of regional functions is planned from a wider view than a single municipality only.

The regional land use plan is an important tool in the decision making process for actors and stakeholders.





### Map and Statement

The regional land use plan is made concrete by a map with a land use classification indicating a desirable future. The explanations of the land use classes are to be found as marginal notes on the map. The regulations for each land use class are given as a separate document.

The written statement gives the regional land use plan a good basis. It states the objectives for and impacts of land use, and other information needed for the interpretation and implementation of the plan.

The map and the land use classes with their regulations are included in a regional land use plan that is to be confirmed.