

Riga

<http://www.rpr.gov.lv/>

Riga City Planning Region

Riga Planning Region as a territory is situated in the central part of Latvia, and its centre is Riga - the capital of Latvia. Riga is internationally recognized as one of the most important metropolis in the Baltic Sea region. The territory of the region includes Riga, Jūrmala, as well as districts of Riga, Tukums, Ogre and Limbaži. The situation in the heart of the Baltic countries and on the border between the European and cultures of the Eastern countries has turned Riga region into the bridge between different countries and their population.

The region is characterised by multinational, dynamic capital city Riga, which has hosted different nations and their influences, however, such picturesque provincial towns as Limbaži, Tukums, Ogre, resort cities of Jūrmala and Sigulda, as well as industrially untouched country side are also important.

Legal framework

In accordance with the Law on Regional Development Riga Planning Region as an institution is a derived public entity /state institution/, which is supervised by the Ministry of Regional Development and Local Government. The decision-making authority of Planning Region is Riga Planning Region Development Council (RPRDC), which is appointed at the meeting of all the heads of the local municipalities comprising this planning region from the municipal deputies. Riga Planning Region Council consists of 18 appointed members.

The work of Riga Planning Region is determined by its by-laws. The functions of Planning Region are determined by the Law on Regional Development. In accordance with the by-laws of RPRDC, Riga Planning Region Administration has been created, which has the function of regional decision-making authority.

In order to provide coordination and cooperation with the institutions at the national level and Planning Region in carrying out the activities for supporting the regional development, a Cooperation Committee has been created in Riga Planning Region, which is administered by the Committee's chairman.



Riga City Planning Region

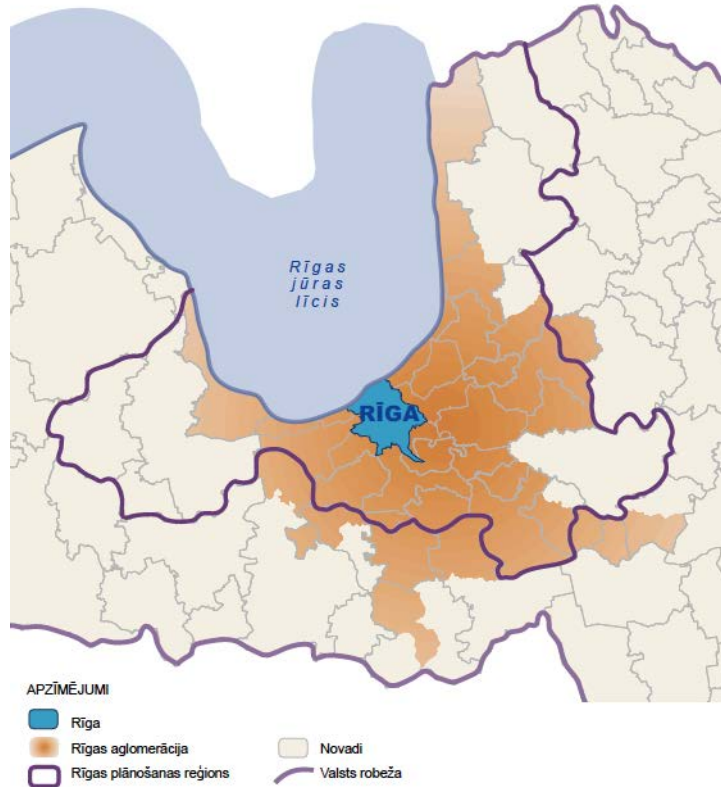
Riga

<http://www.rdpad.lv/>

Riga 2020

Regional context

Riga as a regional level based on the center of specialization related to the Riga agglomeration population daily commuting to the metropolis.



Riga at the regional level

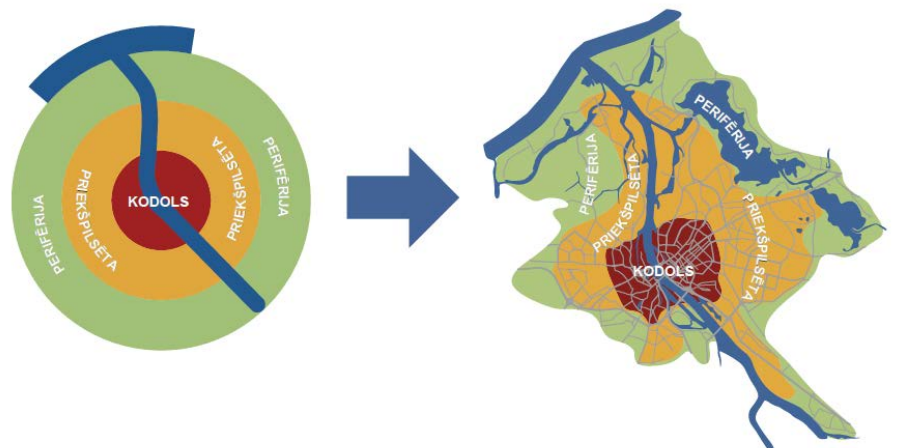
Urban structure

Population spatial structure reflects Riga habitat distribution and diversity.

Riga spatial population structure is distinctly concentric and reflect the historical evolution of the city.

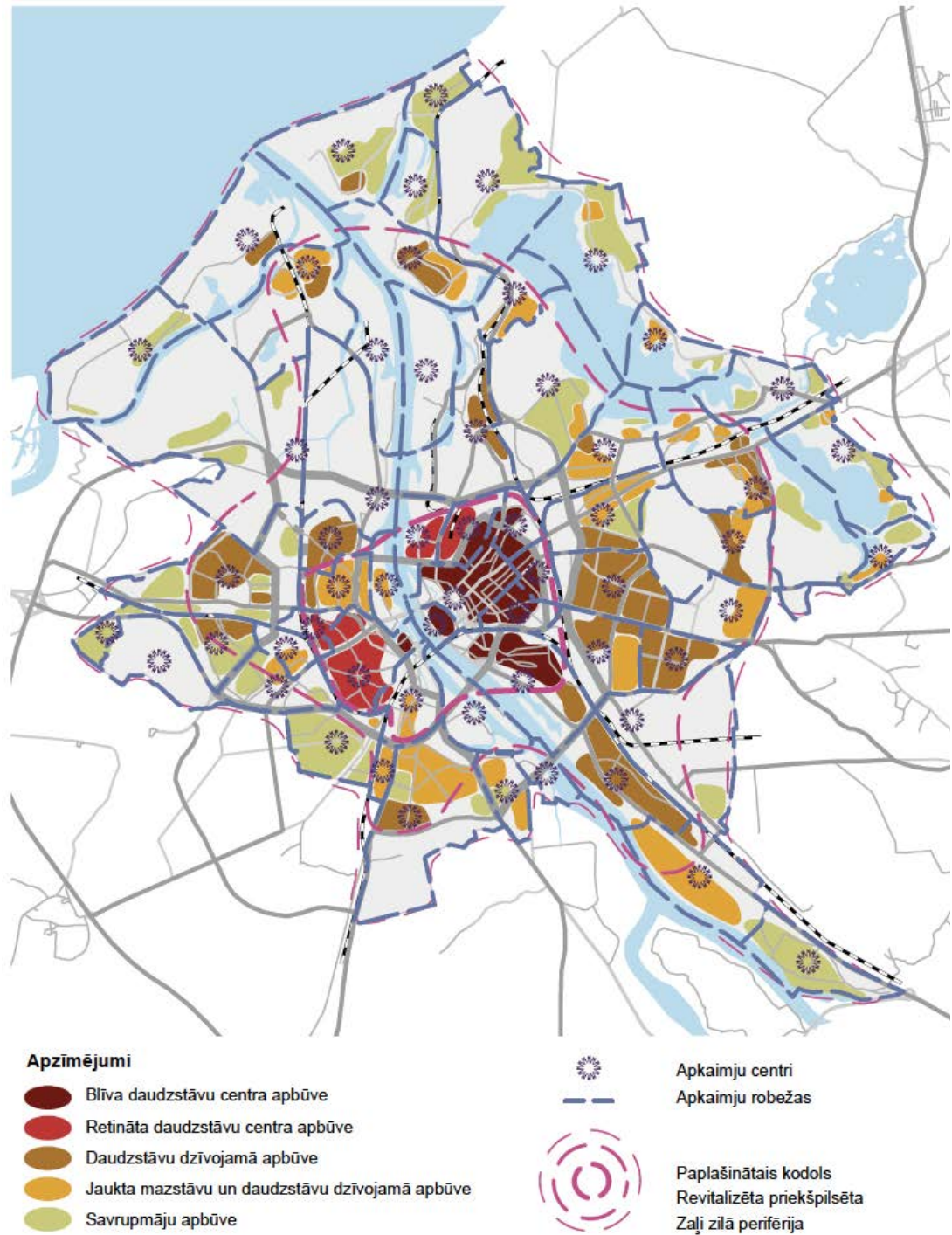
Urban population spatial structure consists of

- Core
- Suburb
- Periphery



Urban population and spatial structure

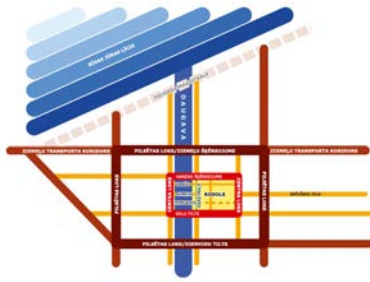
Settlement



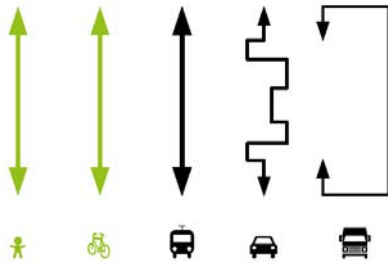
Riga City settlement structure guidelines

Riga heritage structures is based on the 58 neighborhoods that are characterized by a suitable size inhabited environment, which has its own crew, identity and character arising out of the building type, physical borders, the landscape and residents a sense of community

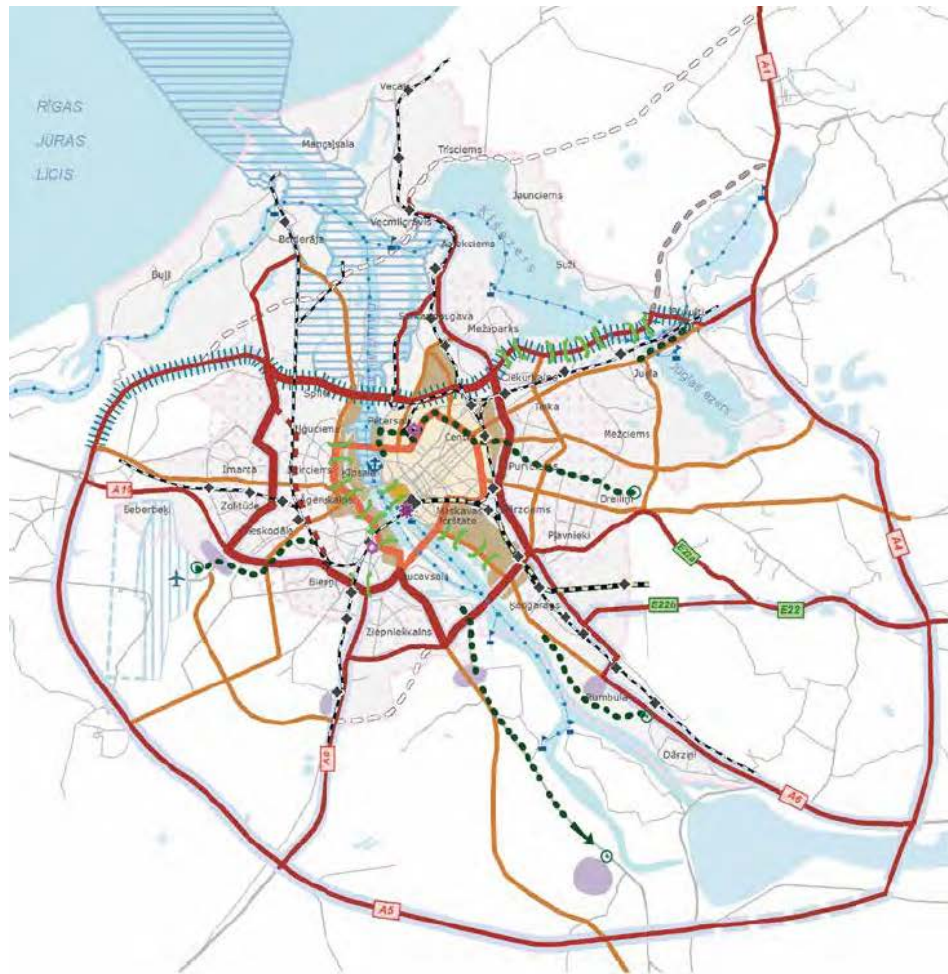
Transport



Street network structure development concept



The principle of urban mobility in the nucleus
The principle of urban mobility in the nucleus

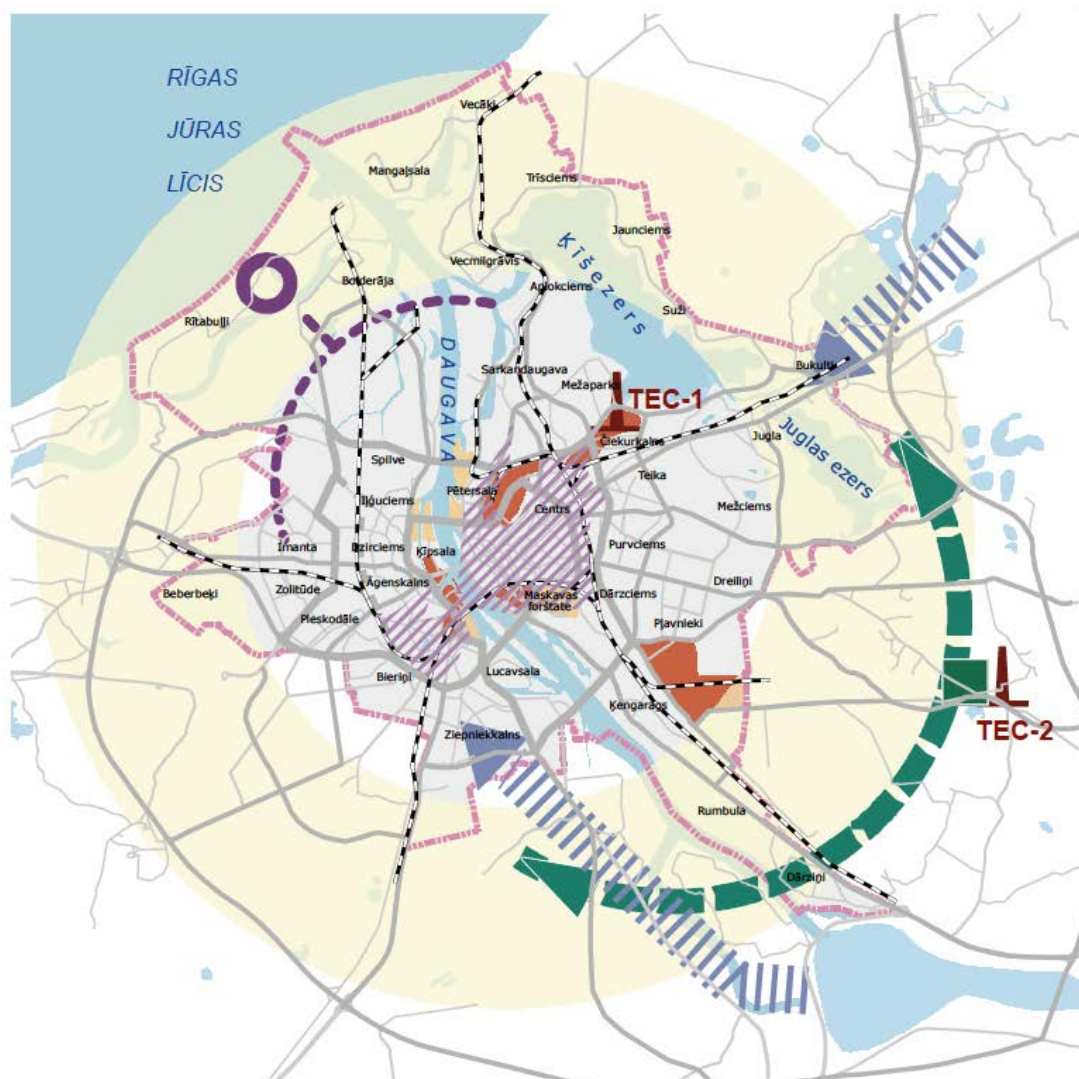


APZĪMĒJUMI





- | | | | |
|--|---|--|---|
| | Centra loks | | Galvenās dzelzceļa stacijas un līnijas |
| | Pilsētas loks | | RAIL BALTICA ievads rīgā |
| | Pilsētas loka posma Rietumu maģistrāle perspektīvais novietojums | | Iespējamās dzelzceļa staciju vietas |
| | Maģistrālie savienojumi | | Intermodālais transportmijas mezgls |
| | Plānotais Baltezersa apvedceļš | | Perspektīvie intermodālie transportmijas mezgli |
| | Citi savienojumi | | Rīgas brīvoša, pasažieru terminālis |
| | Tranzīta kravu transporta loks, pilsētas kravu savienojumi | | Galvenie upju transporta pieturpunkti |
| | Plānotie tranzīta maršruti | | Galvenie upju transporta maršruti |
| | Ziemeļu transporta koridors | | Starptautiskā lidosta "Rīga", pasažieru terminālis |
| | Perspektīvās maģistrāles | | Lidostas "Rīga" paplašināšanās |
| | Esošās tramvaju līnijas | | Transportlīdzekļu iebraukšanas īpaša režīma zona "Vecrīga" |
| | Plānotie tramvaja līniju pagarinājumi, galvenie galapunkti un perspektīvie virzieni | | Transportlīdzekļu iebraukšanas īpaša režīma zona "Rīgas vēsturiskais centrs" |
| | Galvenie ilgtermiņa stāvparki | | Teritorijas, kur samazināms minimālais autonomietju skaits |
| | Vidēja termiņa stāvparku izvietotāšanas teritorijas | | Dzīvojamie rajoni, kuros jānodrošinā prioritāri piebraukšana un autonomietju tipi, publiskā ārtelpa |
| | Vietas, kur jānodrošina "zaļo koridoru" savienojumi un skatu perspektīvas pār maģistrālēm | | |


Transport infrastructure development guidelines

Engineering



Apzīmējumi

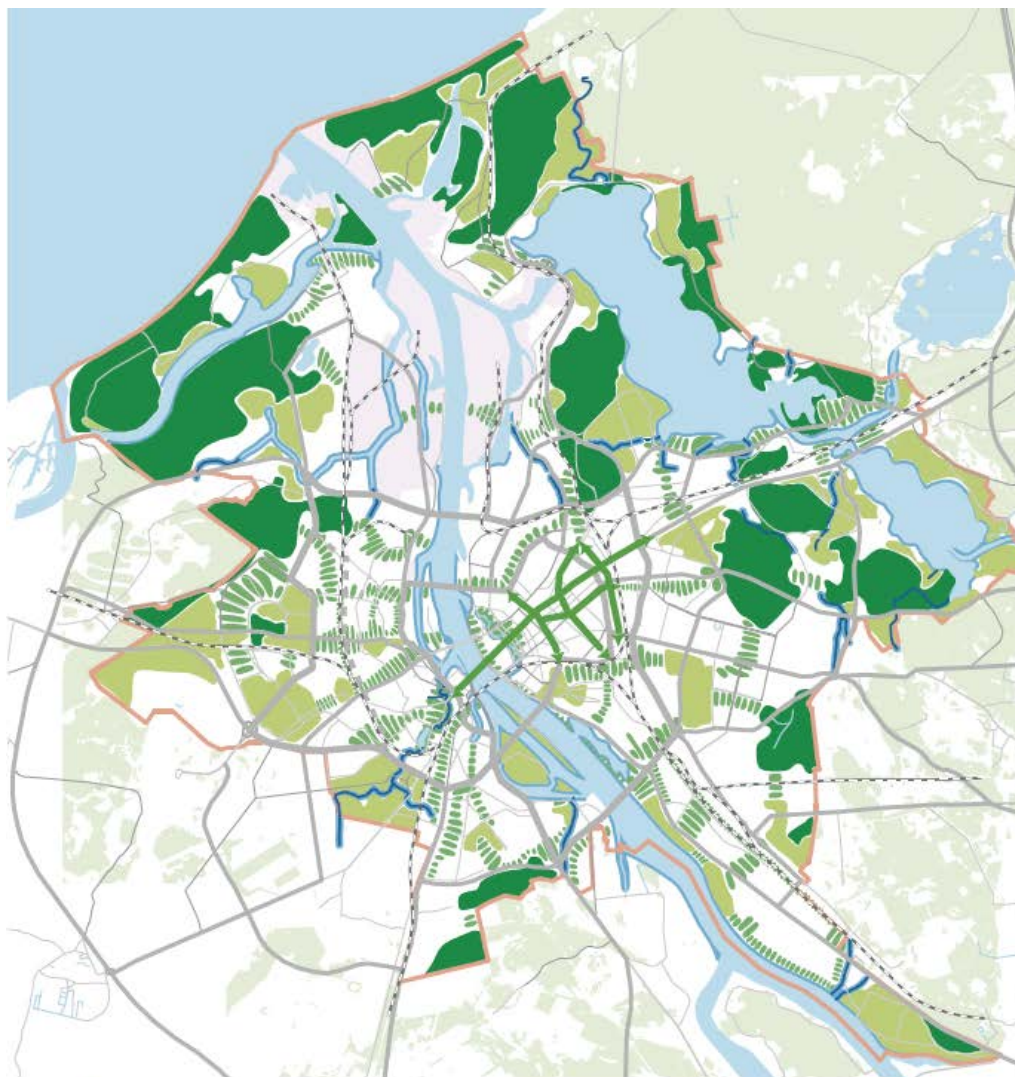
-  Kanalizācijas sistēma, balsīta uz notekūdeņu novadīšanu un attīrīšanu BAS "Daugavgrīva"
-  Gāzes apgāde tiek nodrošināta no sadales sistēmas "Rīgas apvedlīnija" caur GRS "Rīga - 3" un GRS "Ziemeļi"
-  Ūdensapgāde tiek nodrošināta no 6 ūdensgūtnēm
 - 5 pazemes ūdensgūtnēm Baltezersa-Zaķumuižas rajonā;
 - 1 virszemes ūdensgūtnes Rīgas HES ūdenskrātuvē;
-  Siltumapgādē 70% tiek nodrošināti no Rīgas TEC - 1 un TEC - 2

-  Prioritārās attīstības teritorijas, ko plānots attīstīt līdz 2020.gadam
-  Prioritārās attīstības teritorijas, ko plānots attīstīt līdz 2030.gadam
-  Zaļās perifērijas teritorijas, kur inženierinfrastruktūras objektu attīstība jāveicina kompleksī līdz ar attīstības projektu skaita un blīvuma pieaugumu saskaņā ar pilsētas un inženierkomunikāciju turētāju attīstības plāniem
-  Kanalizācijas kopsistēma

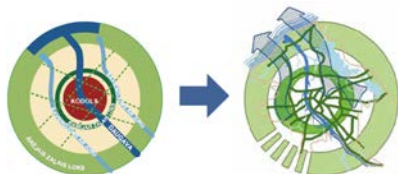
Engineering development guidelines

The city engineering infrastructure consists of electricity, gas, heating, water supply, sewage, as well as various communication objects related to the service production, transmission, as well as consumption.

Nature



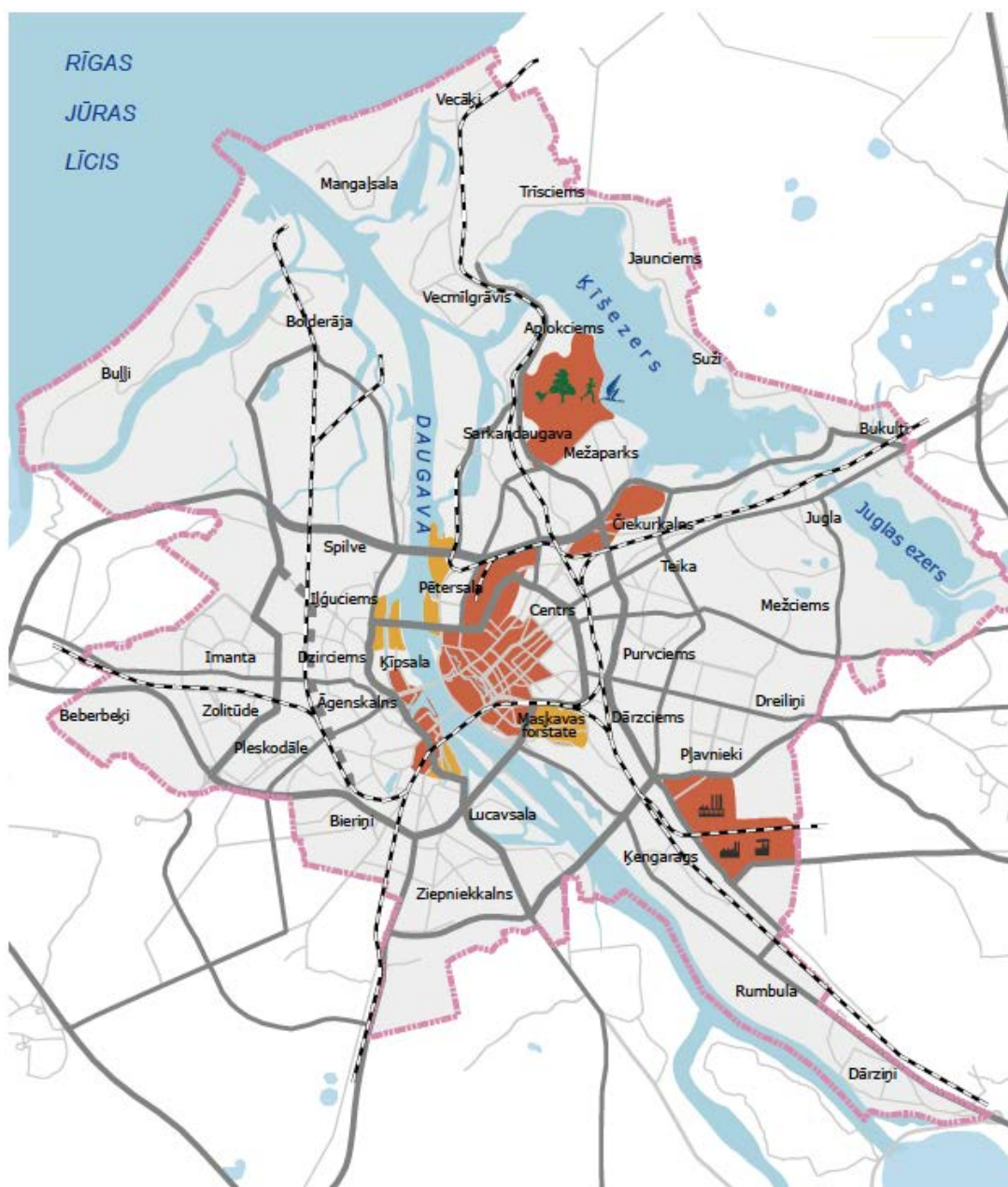
- Zaļie centri
- Teritorijas ar lielu apzaļumojuma blīvumu
- ||| Zaļie koridori
- ~ Zaļo taku virzieni pilsētas kodolā
- ~ Ūdensmalas
- ~ Ūdens struktūra
- Zaļā josla ārpus pilsētas
- Rīgas brīvosta



Natural spatial development guidelines

One of the most significant Riga spatial structures are natural and green areas - forests, Mezaparks, parks, squares, waterfronts, family gardens and open waters .

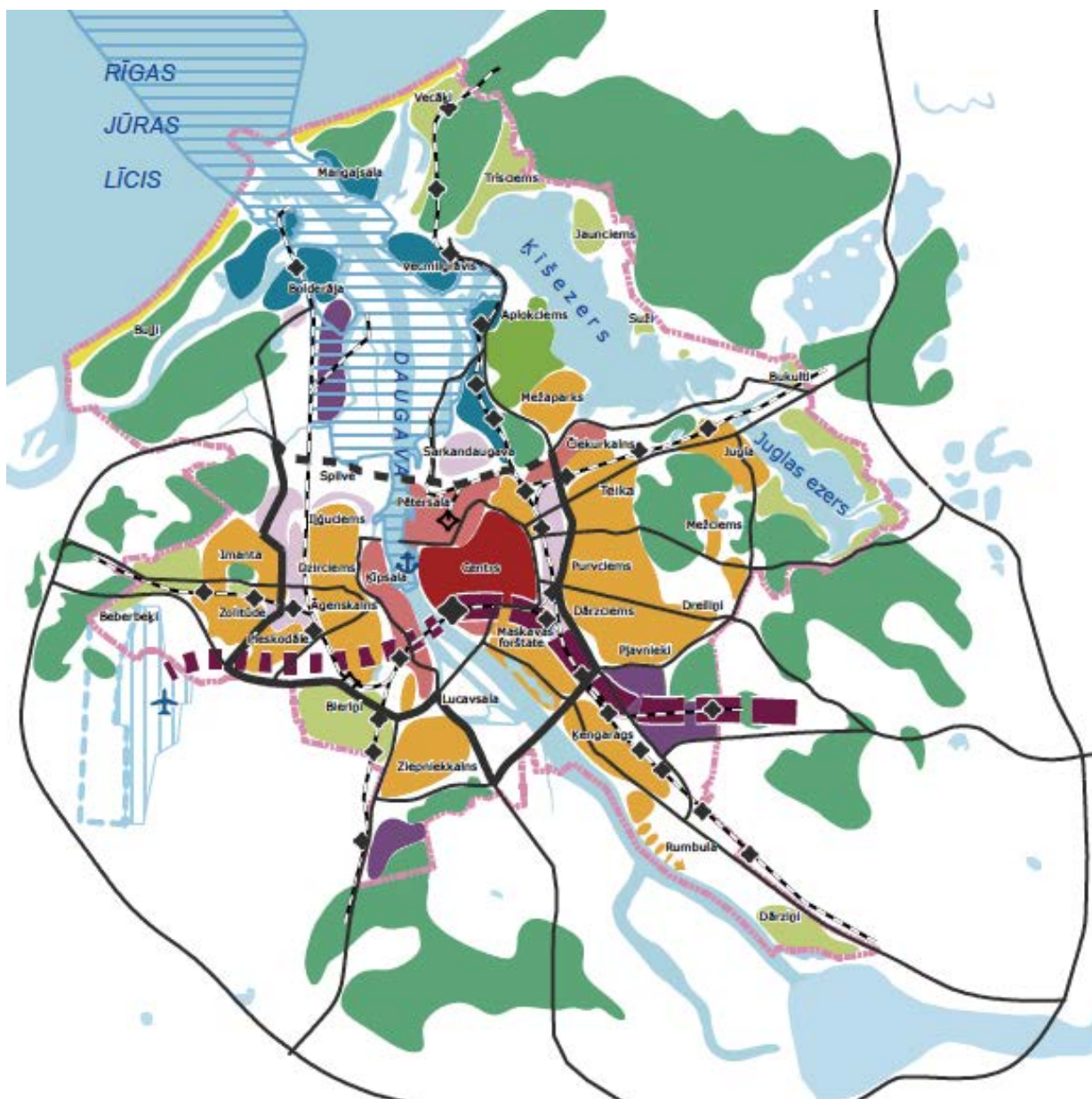
Priorities



Priority development areas in the city of Riga

Priority development teritoriju10 development is of strategic importance for the whole city scale - it significantly affects the growth of Riga as a whole:

- Contribute to the attraction of the population
- Generate income
- Strengthen the capital functions and Riga international competitiveness



Apzīmējumi

- | | | | |
|---|---------------------------------------|---|--|
|  | Pilsētas kodols |  | Transporta infrastruktūra |
|  | Prioritāri attīstāmās teritorijas |  | Iespējamie Daugavas šķērsojumi |
|  | Prioritāri revitalizējamās apkaimes |  | Galvenie dzelzceļa pieturas punkti un līnijas |
|  | Revitalizējamās dzīvojamās apkaimes |  | "Rail Baltica" ievads un savienojums ar starptautisko lidostu "Rīga" |
|  | Savrupmāju teritorijas |  | Rīgas brīvosta, pasažieru terminālis |
|  | Revitalizējamā rekreācijas teritorija |  | Starptautiskā lidosta "Rīga", pasažieru terminālis |
|  | Pludmales rekreācijas teritorijas |  | Starptautiskās lidostas "Rīga" paplašināšanās |
|  | Zaļie centri | | |
|  | Galvenie ražošanas centri | | |
|  | Ražošanas teritorijas | | |

Riga City Framework plan