

Metropolitan Region Cologne/Bonn

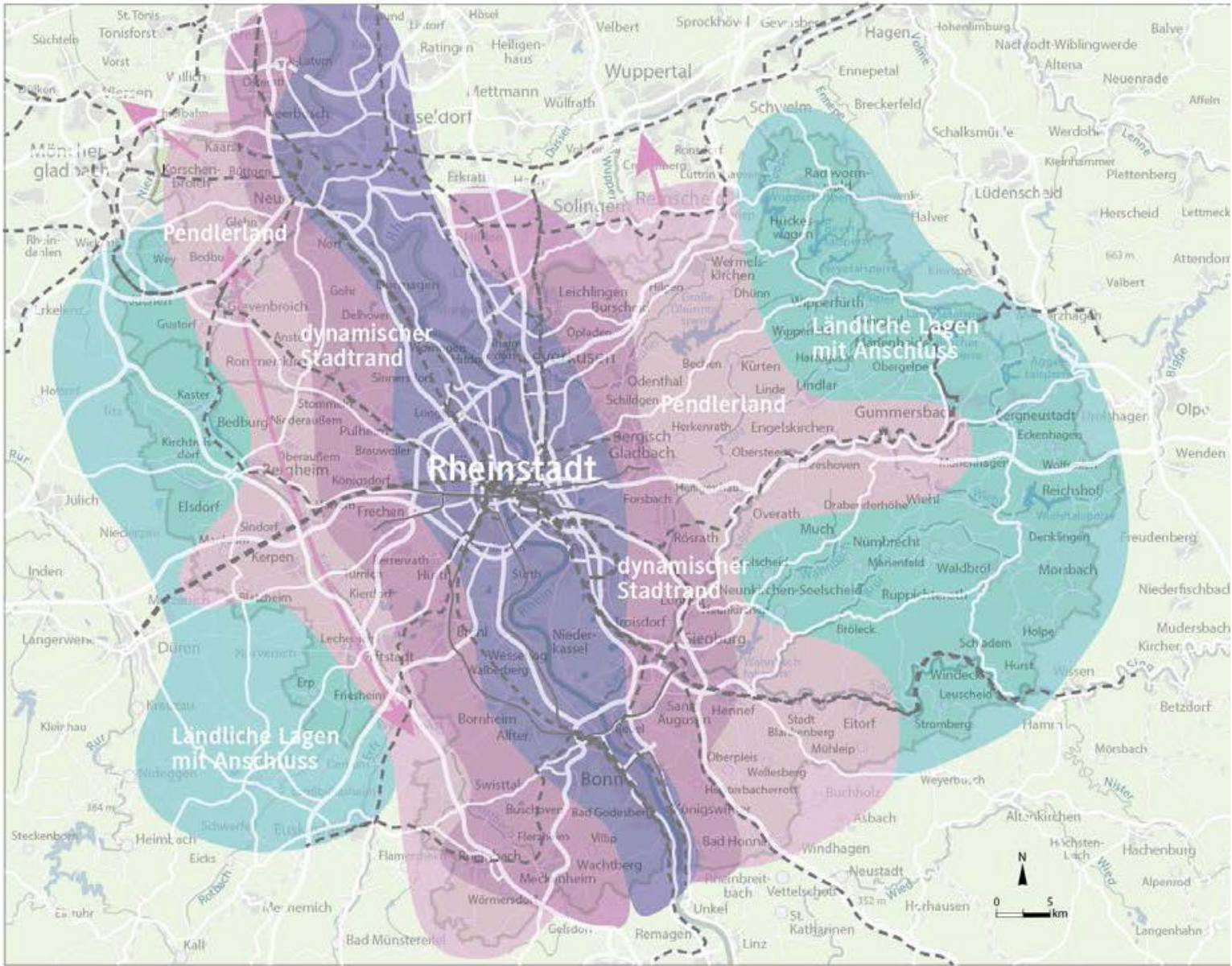
<http://www.region-koeln-bonn.de/de/region/index.html>

The Metropolitan Region Cologne/Bonn is a merger between three cities - Cologne, Bonn and Leverkusen – as well as the districts of Rhein-Sieg-Kreis, Rhein-Erft-Kreis, Rhein-Sieg-Kreis, Oberbergischer Kreis and Rheinisch-Bergischer Kreis. The region's spatial extension totals 4400 sq km and is home to about 3.6 million citizens. The Cologne / Bonn region is nourishing ground when it comes to service, commerce and industry, it is home to over 300000 enterprises.

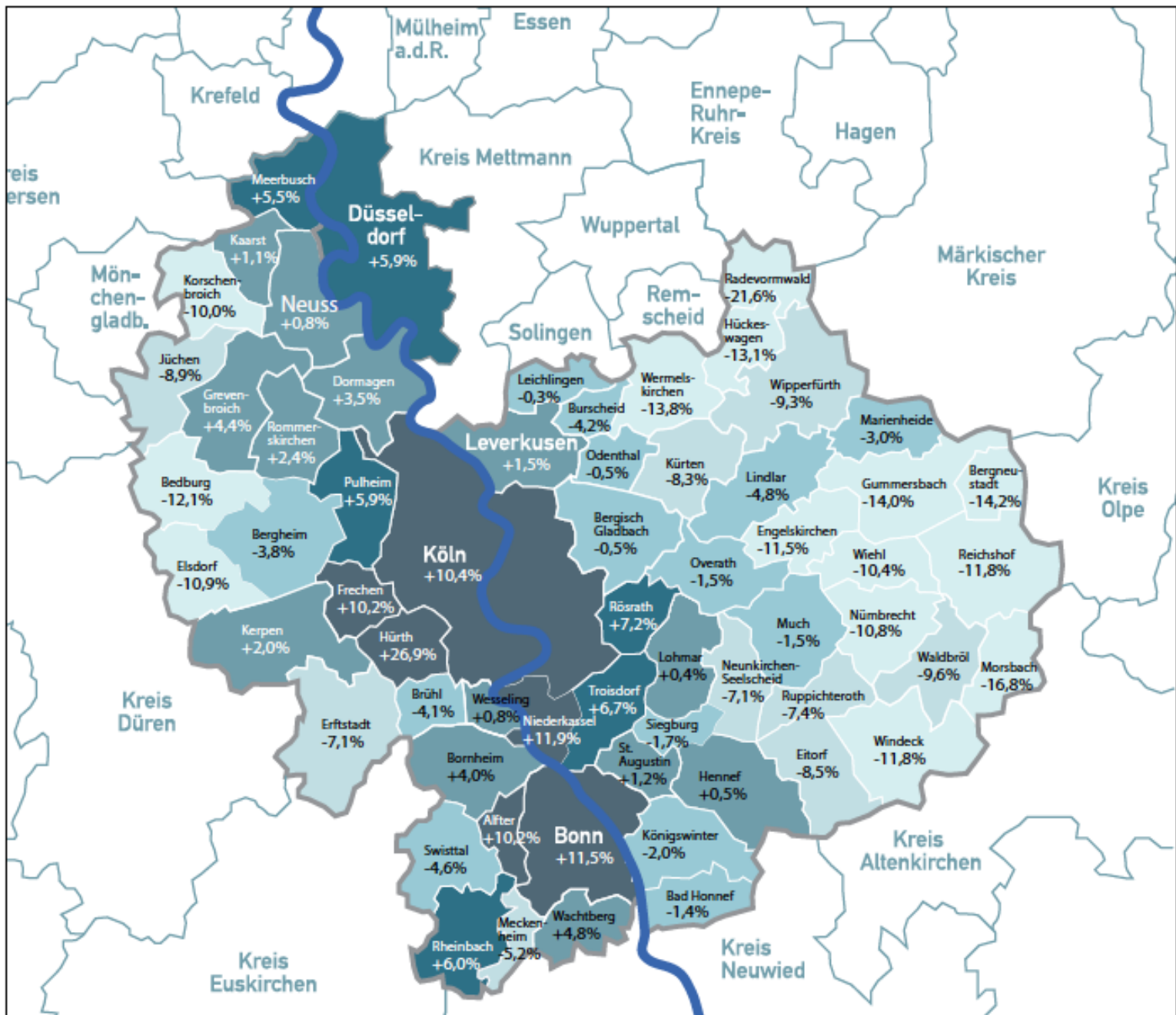
Major strengths include the magnetism of the region concerning not only culture and tourism, but also the appeal of economic circumstances and innovations. Creativity and the urge for knowledge provide nourishment for the region. The Region benefits from its central location within interconnected and expanded European Regions. It is part of the largest and most productive European economic area and also a hub within Europe with optimum infrastructural accessibility.

Given the backdrop of metropolitan areas increasing in importance for the European economic area, the Metropolitan Region Cologne/Bonn has bundled its attractivity and actively pursues a sustainable, networked development of the Cologne/Bonn metropolitan area in regional, federal and continental dimensions.

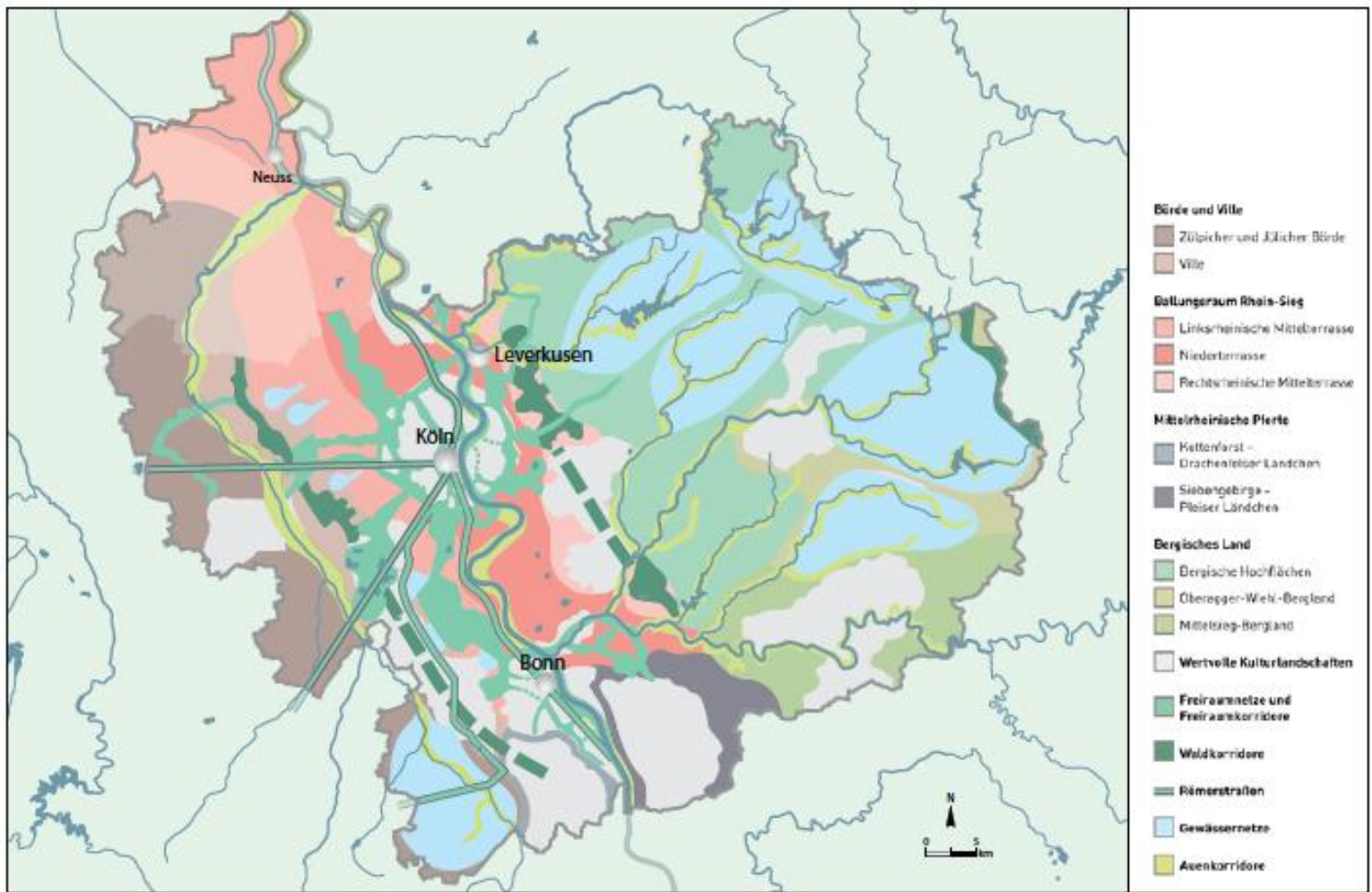




RheinStadt



Population 2011-2030



Green Infrastructure