

Mazovia

www.mbpr.pl/

Strategy for Mazovia to 2030

Mazowieckie voivodship development strategy until 2030 is based on the experience the implementation of the previous strategy and the problems that emerged during the previous and current programming period. The document is a response to the challenges, which must cope province to improve the quality of life, reduce social exclusion and unemployment, realize Territorial cohesion policy and the policy of smart and sustainable development.

The essence of strategy It is to identify development goals, the implementation of which will ensure the maintenance of sustainable development. Mazowieckie voivodship development strategy until 2030 applies to all actors of socio of the region.

It indicates the action to be pursued to achieve the adopted development objectives. The strategy reflects the aspirations of the region and takes into account the directions of Polish and the European Union.

Development Strategy for the Mazowieckie voivodship 2030

SWOT Analysis - Strengths and Opportunities

Strengths

- The greatest potential for economic and population among the provinces;
- Leadership entrepreneurship in Poland
- A large share of entities operating in the sectors generating the most innovation and companies with foreign capital
- Poland's largest scientific potential (Warsaw, Radom, Plock) the development of high-tech industries
- Developed service sector - the highest rate in the country's GDP mainly due to the services sector
- The strength of the Warsaw metropolis associated with the functions of metropolitan, good transport links, especially in international transport; a place to do business and attract entrepreneurial people
- Location of the region in strings of European transport corridors with a knot in Warsaw
- A strong position in the agri-food industry, specialized areas of agricultural production, which are the basis of raw materials (fruit, vegetables, milk, livestock for slaughter) for food processing
- A high level of education and the cities of Warsaw residents regional and subregional
- The natural resources of European importance, the presence of resources medicinal waters and geothermal
- A high level of gasification of the metropolitan area of Warsaw and big cities
- A rich cultural heritage, which developed activities
- Cultural
- Increasing tourist traffic in the country, including in particular in Warsaw

Scenarios

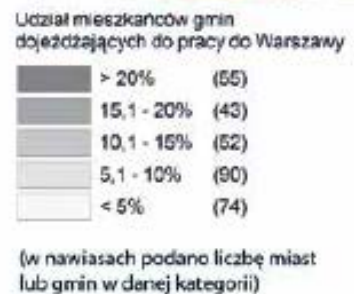
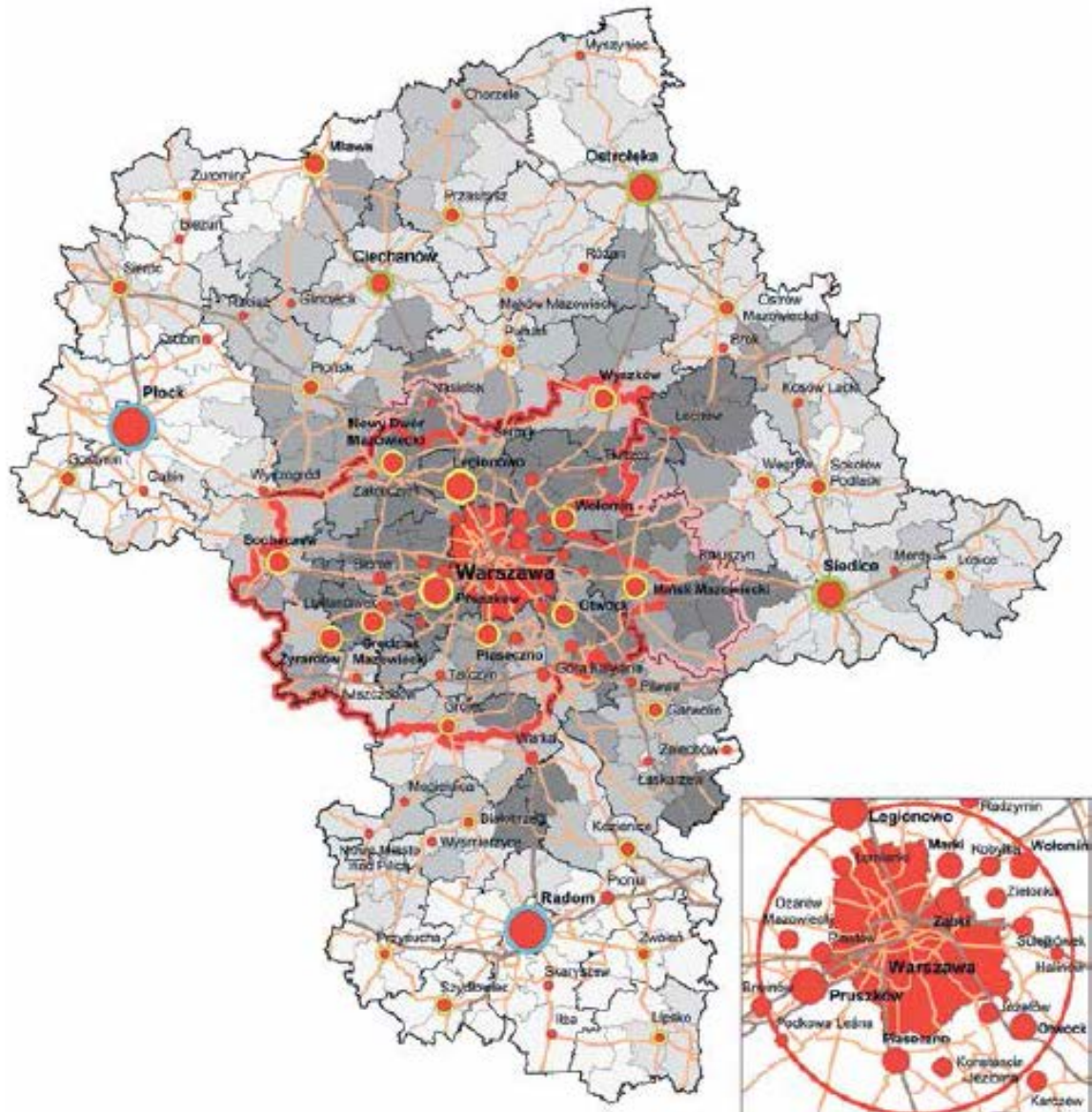
Theme with regard to their potential development, and knowledge about national and international trends, allows the identification of four possible scenarios development of the region.

Support competitiveness
Sustainable development
Crisis
Levelling differences
crisis

Opportunities

- Development of specialized production areas, networking including clusters, highly specialized consortia
- R & D development of new technologies mainly, biotechnology, biomedicine, nanotechnology, photonics and optoelectronics, technology Information and communication technologies (ICT) and space
- Development of industry, the production of new, innovative materials and devices based on the latest achievements of science and technology
- Development of entrepreneurship and off-farm jobs using internal potential
- Development of regional cities, sub-county development socio-economic functions and activation areas rural
- Exploiting the potential of Mazowieckie in the field
- Energy from renewable sources and the possible use oil and gas resources from shale
- Development and modernization of the transport system (infrastructure development TEN-T, fast speed railways, airport Central, airports regional, including Radom-Sadkow and local)

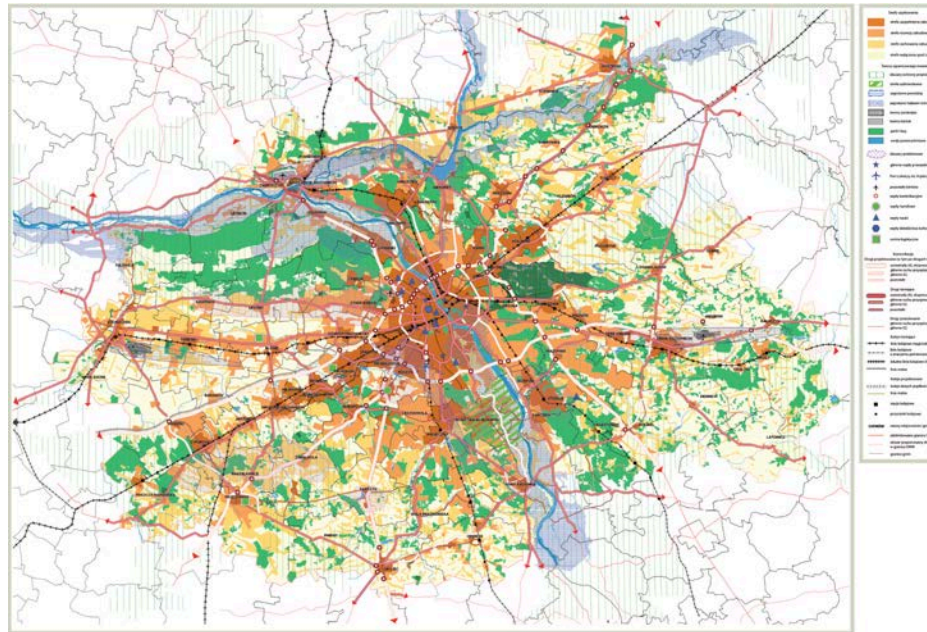
STRATEGIA ROZWOJU WOJEWÓDZTWA MAZOWIECKIEGO DO 2030 ROKU
Innowacyjne Mazowsze



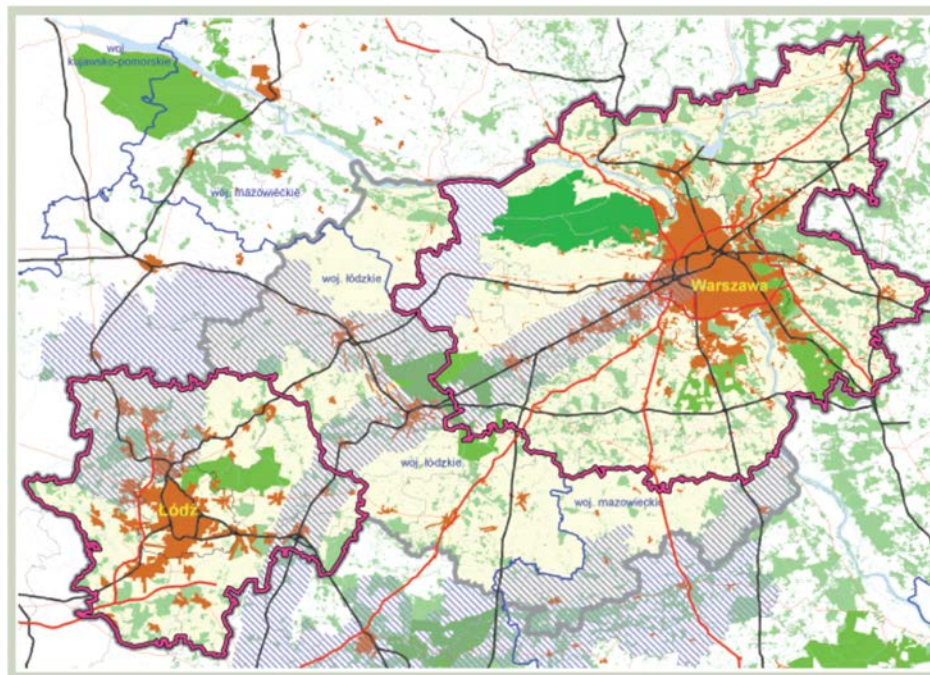
*Przyjęcie rozszerzenia granicy OMW wynikające z konsultacji społecznych projektu „Strategii rozwoju województwa mazowieckiego do 2030 roku” ogólnie Niszejk z powiatu nowardwowskiego oraz o pozostałe gminy z powiatu mińskiego.

Development Strategy for the Mazowieckie voivodship
2030

Development Plan for Warsaw Metropolitan Area



Development Plan for Warsaw Metropolitan Area



Relationship between Warsaw and Lodz Metropolitan Areas