

Marseille

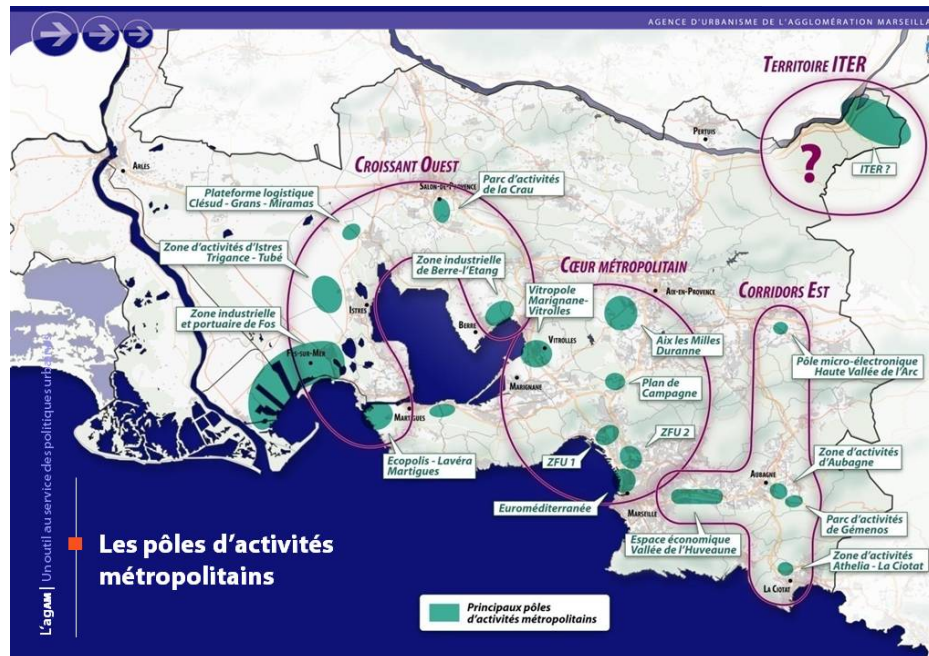
<http://www.agam.org/>

Agence d'Urbanisme de l'Agglomération Marseillaise - agAM

agAM is a Member of FNAU, the 51 National Federation of Urban Agencies



National context



Metropolitan context

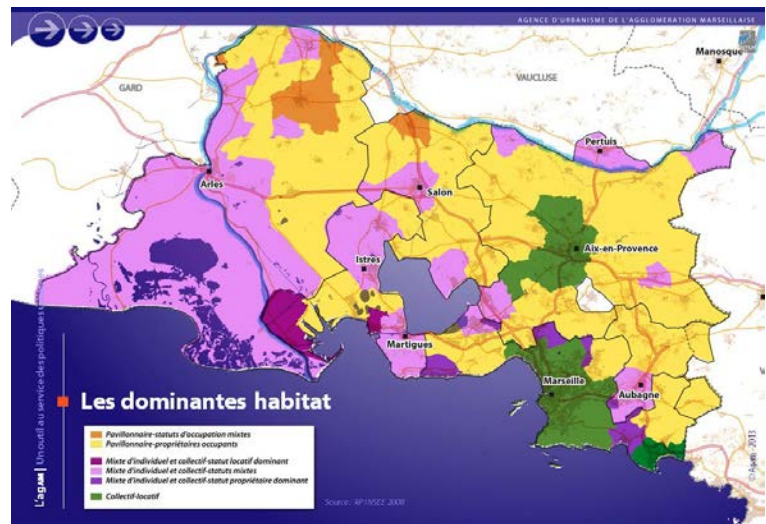
The principle poles of metropolitan activity

The nine Communauté that make up the agAM



Administrative areas in the agAM

- Pavillonnaire-statuts d'occupation mixtes
- Pavillonnaire-propriétaires occupants
- Mixte d'individuel et collectif-statut locatif dominant
- Mixte d'individuel et collectif-statuts mixtes
- Mixte d'individuel et collectif-statut propriétaire dominant
- Collectif-locatif



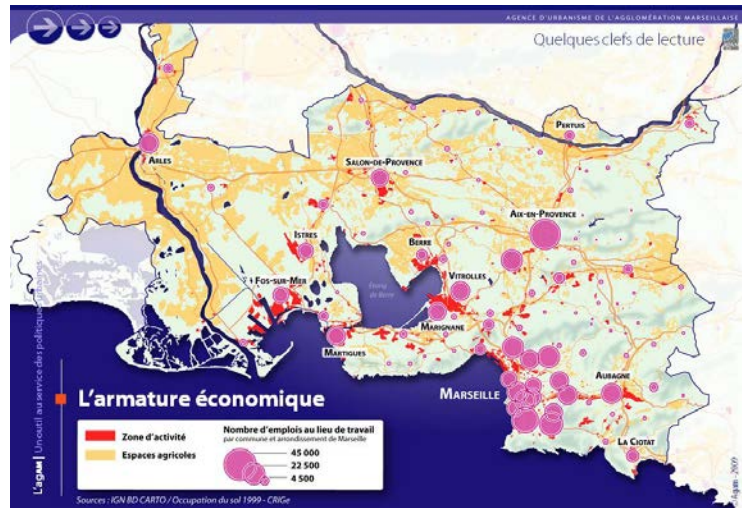
Habitats

The major economic locations, university poles and research centres



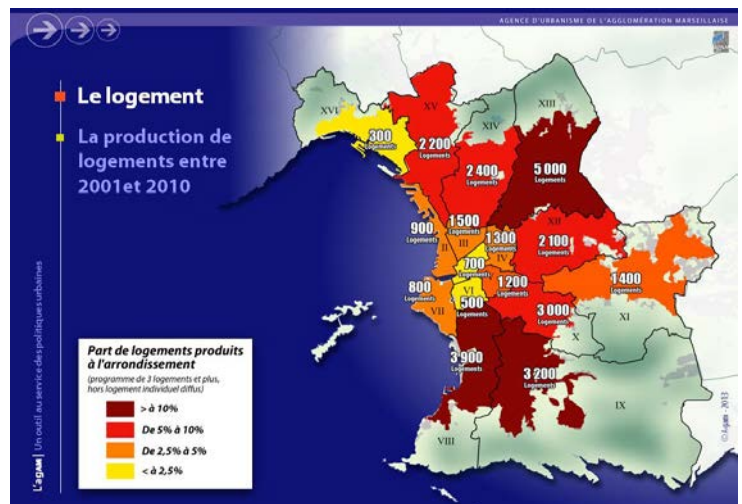
Economic context

The main centres of employments



Employment context

Housing production 2001-2010



Marseille housing context

MAP 2010

- 01 - MUCEM
- 02 - REGIONAL CENTRE FOR THE MEDITERRANEAN (CRM)
- 03 - FORT SAINT-JEAN
- 04 - GARE MARITIME DE LA MAJOR
- 05 - LES TERRASSES DU PORT
- 06 - LES DOCKS (RENOVATED OFFICES)
- 07 - J.-C. IZZO SECONDARY SCHOOL
- 08 - DÉSIRÉE CLARY AND CHEVALIER PAUL SCHOOLS
- 09 - HOSPITAL
- 10 - M1 « L'ÎLOT / L'ATRIUM / LE PATIO » (HOUSING)
- 11 - RUFFI GYMNASIUM
- 12 - EUROMED CENTER (OFFICES, CINEMA, HOTEL)
- 13 - LE SILO (OFFICES, CONCERT HALL)
- 14 - BOUCHES-DU-RHÔNE ARCHIVES AND LIBRARY
- 15 - LES QUAIS D'ARENÇ
- 16 - CMA-CGM TOWER
- 17 - REGIONAL CONTEMPORARY ARTS CENTER (FRAC)
- 18 - BUSINESS DISTRICT
- 19 - SAINT CHARLES TERMINAL AND NEIGHBORHOOD
- 20 - LA MAJOR ESPLANADE
- 21-22-23 - BELLE DE MAI
- 21 - HISTORIC HERITAGE CENTER
- 22 - MEDIA CENTER
- 23 - SYSTÈME FRICHE THÉÂTRE
- 24 - PORTE D'AIX (HOUSING, CITY PARK)
- 25 - A7/LECLERC DEVELOPMENT AREA
- 26 - M5 - LES DOCKS (HOUSING)
- 27 - EUROMÉDITERRANÉE II (PLANNING PHASE)



Euroméditerranée

An operation of national interest run by the Euroméditerranée Urban development Agency

www.euromediterranee.fr

Euroméditerranée Urban Development Agency (EP AEM) was launched in 1995 by the combined efforts of the French Government, the City of Marseille, the Local and Regional Authorities and Marseille Provence Métropole Communauté urbaine. EPAEM is also supported by the European Union.



Euroméditerranée 1995-2020

10 keys figures

- Largest urban regeneration project in Europe
- A catalyst for economic and cultural development to make Marseille one of the Top 20 European cities
- Core of the Marseille-Provence 2013 European Capital of Culture programme – 80% of facilities are located within the Euroméditerranée area
- A productive partnership between City and State authorities ensuring each euro of public investment generates 4-5 euros of private investment, for a total investment of € 7.5 billion
- 1200-acre (480 hectares) urban regeneration zone, which will include: + 1 million m² of office space, + 24,000 new and regenerated housing units, + 200,000 m² of premises, + 200,000 m² of public facilities, 150 acres (60 hectares) of new or renovated parks and public spaces
- Emergence of a true city skyline designed by internationally renowned architects
- A pioneer environmentally-friendly project named – the “EcoCité” – devoted to sustainable development and improving the quality of urban life in Marseille: housing, employment, social equality, economic growth, transport and mobility, architecture, culture, respect for the environment, seaside spaces, green spaces
- 40,000 new residents and 35,000 new jobs
- Fewer cars and better access to city centre: TGV high-speed train station Saint-Charles; Arenc multimodal station with connections to the airport by TER commuter train; rerouting the A7 motorway away from the Porte d’Aix; building three new tunnels and 7,000 new underground parking spaces
- 3 miles (5 km) of waterfront promenade for the people of Marseille, running from the Old Port to Cap Pinède and 6.25 acres (2.5 hectares) of portside space cleared in the J4 area