



METREX Intentions

2007 onwards

METREX : The Network of
European Metropolitan Regions and Areas



METREX INTENTIONS 2007 ONWARDS





CONTENTS

Context - the need to plan	4
METREX = Metropolitan Exchange	6
Purpose = Practitioner exchange	7
History and development - an Association Sans But Lucratif (AISBL)	8
Metropolitan dimension	10
Political dimension	12
Networking and METREX primary activities	14
Meetings	16
Conferences	17
Projects	17
InterMETREX	18
PolyMETREXplus	20
METREX, climate change and low carbon energy futures = a key metropolitan issue	22
Expert Groups	24
ESPON	25
International dimension	26
European Neighbourhood Policy	27
Communications	28
Key references	30
Presidency and secretariat/interpretariat	31
Finance	32
Membership	34
List of members	36
METREX agenda summarised	38



JOIN US

METREX
advocates that to
plan is a basic
function of
governance at the
European and
metropolitan levels
as well as a basic
human need.

CONTEXT - THE NEED TO PLAN

Patrick Geddes (1854 - 1932) was an eminent European planner, environmentalist and educationalist who recognised the relationships between cities and their surrounding areas and between urban activities and their environmental impact. He conceived the concept of **the synoptic view**. He maintained,

"To plan is a basic human need".

The European Union has only recently formally recognised the need for a territorial dimension to its activities. METREX is the Network of Metropolitan Regions and Areas and one of its founding purposes is to contribute a metropolitan dimension to European policy and decision-making.

Many European countries have well-established planning systems at national, regional, provincial and community levels but some are only now establishing these within the framework of the European Union. However, metropolitan governance (ie across major urban areas and their areas of influence, regardless of historic administrative boundaries) is not yet well established across Europe.

Synoptic - concerned with conditions over a wide area at a given time.

TO PLAN IS A BASIC HUMAN NEED



Patrick Geddes (1854 - 1932)

METREX aims to provide a framework within which members can network for their individual and collective benefit in a cost effective, stimulating and rewarding way.

METREX = METROPOLITAN EXCHANGE

There are about 100 recognised metropolitan areas within Europe with populations over about 500,000. These are the major urban areas, which together comprise over 60% of Europe's population of 490 million. They are the major economic engines of the European economy and the focus for social change. Their environmental impact in terms of energy and resource consumption means that they have to be at the forefront of policy for a more sustainable European future. Their inter-relationships mean that they are also fundamental to Europe's territorial cohesion.

Some 50 European metropolitan areas, from 21 European countries, are now Members of METREX. They are represented by 59 individual authorities and bodies.

METREX is therefore well placed to facilitate the exchange of knowledge between metropolitan regions and areas that is necessary to enable well-informed and effective strategic decision-making at the metropolitan level.

PURPOSE = PRACTITIONER EXCHANGE

METREX is a practitioners' network. Members can include all those who are involved in decision-making on spatial planning and related social, economic and environmental issues at the metropolitan level – be they politicians, officials or their advisers. Such issues are invariably inter-related and need to be addressed in an integrated way over a longer term.

The body of knowledge that the METREX membership now represents is significant and the Network exists to enable members to share their expertise with others. Members can draw on the experience of other colleagues when addressing their own particular problems and opportunities. They can also contribute their knowledge where this is relevant and helpful to others.

The Internet has enabled networking to become a high value low cost activity. However, networking with confidence between colleagues also requires the development of strong personal relationships.

exchange

METREX
has now created a
body of findings and
conclusions on many
key issues of
metropolitan
concern, which can
be freely
downloaded from the
METREX web site or
obtained on CD from
the **METREX**
Secretariat.

HISTORY AND DEVELOPMENT **an Association Sans But Lucratif (AISBL)**

METREX was founded in 1996 at the Glasgow Metropolitan Regions Conference with the support of the European Commission. The Commission recognised the significance of metropolitan areas to the urban future of Europe. The conference adopted a Founding Declaration, which set out the basis upon which METREX was then established.

Later in 1996 at a first meeting in Brussels a founding group of 15 metropolitan regions and areas agreed the Network Statutes. These then provided the foundation for an application to the Belgium Government for recognition as an Association Internationale Sans But Lucratif (ie. AISBL – international not for profit association). This status was granted by Royal Decree in August 2000.

The Area Metropolitana do Porto recognised that METREX needed something more than the Statutes, which are essentially the operational procedures of the Network, and in 1999 the Porto Convocation was held at which 40 European metropolitan regions and areas signed the Metropolitan Magna Carta. This more specifically provided the focus for future METREX activities and initiatives. It was supported by a related Practice Benchmark.

Within this framework the Network has promoted the SocioMETREX, InterMETREX and PolyMETREX projects to identify a more detailed benchmark of effective spatial planning and development practice within metropolitan areas and to provide a framework for cooperation between metropolitan areas.

The Network has now held 20 biennial meetings and related seminars and 11 biannual conferences and related congresses in 30 different metropolitan areas on a wide range of themes and issues of common interest to Members. Nine expert groups have considered selected key issues in greater depth. The outcomes of all these events and activities have been summarised in 'Impressions', produced to mark the 10th Anniversary of METREX in 2006, and published in detail on the METREX web site.

METREX has contributed a metropolitan perspective to European debates, led by the European Commission and related European institutions, on social, economic and territorial cohesion, the Lisbon competitiveness agenda, metropolitan governance and related affairs.

METREX
will continue to
advocate the
definition and
recognition of
metropolitan regions
and areas across
Europe and the
establishment of
appropriate forms of
metropolitan
governance to
enable key issues to
be addressed
effectively.

METROPOLITAN DIMENSION

There is a range of inter-related key social, economic and environmental issues that can be addressed most effectively at the metropolitan level.

These include, for example:

- urban structure and the balance to be struck between urban renewal (of land and buildings) and urban expansion
- urban connectivity and the relationships between modes of transport for people and goods
- economic change and the need for urban restructuring to cope with the consequences of growth or decline
- social change and the need for urban facilities and services to respond to factors such as migration, demographics and consumer expenditure
- environmental sustainability and the need to safeguard natural resources and balance their use and development with their capacity for regeneration
- climate change and the need to mitigate the emission of urban greenhouse gases and adapt to the consequences of global warming.

Such issues require to be considered in an integrated way over the longer term. Forward planning of this kind will require a process of metropolitan governance to assess needs and balance these with options for development, their costs and benefits and their environmental impact. This is the metropolitan dimension.

European metropolitan areas have already established a range of approaches to their governance (ie.taking strategic decisions in the public interest on the basis of subsidiarity). These vary from statutory authorities, with a full portfolio of competencies, capabilities, powers and resources, to bodies with selected competencies to address a specific range of key issues, to voluntary cooperation between existing levels of government (eg. Regions, Provinces and Communities).

METREX has advocated, through the InterMETREX Benchmark, that all levels of government in metropolitan regions and areas should, on a collective basis, consider the key issues that they need to address and the competencies, capabilities and processes that are necessary in their circumstances for effective governance.

METREX
intends to continue
to contribute to
European affairs and
to foster a more
active political
dimension within
METREX.
It will do this by
encouraging
members to
participate in
meetings and
conferences with
politicians and
officials.

POLITICAL DIMENSION

In addition to fostering the exchange of knowledge on metropolitan issues between practitioners, METREX has also contributed a metropolitan dimension to European affairs.

In particular, METREX has:

- worked in partnership with the European Economic and Social Committee (EESC), which represents the interests of civil society to the EU, to promote the metropolitan dimension through EESC Opinions to the European Parliament
- responded to EU consultative processes on territorial, cohesion and sustainability issues
- held regular background meetings with the European Commission
- actively participated in the EU Brussels Open Days.

CONTRIBUTING TO EUROPEAN AFFAIRS



METREX
seeks to offer
members a range of
opportunities to gain
and exchange
knowledge that are
compatible with the
time that they may
have available.

We
recognise the need
to provide high value
low cost knowledge
transfer.

NETWORKING AND METREX PRIMARY ACTIVITIES

It is recognised that a practitioner network such as METREX, which includes colleagues with demanding jobs in government, cannot expect members to contribute their time to European networking unless it is of real value to them.

METREX members can:

- make the body of knowledge and experience in their organisations available to METREX colleagues
- take advantage of the opportunities for exchange offered by spring and autumn meetings and biannual conferences
- initiate or participate in expert groups on key issues of common interest and relevance
- participate in major EU INTERREG Programme projects promoted by METREX
- participate in international study visits.



METREX
meetings are
programmed for
Paris in spring 2009,
Wroclaw in autumn
2009, Riga/Vilnius in
spring 2010 and
Athens in spring in
2011.

Conferences are
programmed for
London in autumn
2008 and Hamburg in
autumn 2010.

MEETINGS

Meetings are held twice a year, in the spring and autumn, in a different member metropolitan area. Meetings provide the membership with opportunities to visit and experience the wide variety of metropolitan circumstances across Europe. It also provides the host member with the opportunity to set the theme for the meeting and to explore issues of its choosing with colleagues.

Meetings normally run for two days from a Wednesday evening until a Friday evening. Thursday is usually the host's day and on Friday International, European and METREX affairs are addressed.

Managing Committee meetings, comprising all members, take place on the Saturday morning after a meeting and deal with the ongoing management of the Network and its activities. The proceedings of meetings and Conferences are published on the METREX web site and CD's of presentations are circulated afterwards. In this way members are able to build up an electronic library of reference material.

METREX meetings and conferences have now evolved to take a more interactive form with a facilitator to promote and orchestrate discussion and exchange.

CONFERENCES

Conferences take the same form as meetings but with a significant theme of current interest.

Conferences aim to attract high-level speakers who are experts or authorities in their field.

A METREX General Assembly takes place on the Saturday morning after a conference and deals with the METREX Programme of Meetings and Conferences for the coming two to three years, the budget, the election of a President and the longer term direction of the Network and its activities.

PROJECTS

The INTERREG Programme of the European Commission helps European regions to share their knowledge and experience. METREX has promoted two major projects, InterMETREX and PolyMETREXplus, under INTERREG IIIC (2000 - 2006), to enable metropolitan areas to take advantage of its co-funding provisions.

METREX intention is to now promote and progress the EUCO2 80/50 project, which aims to provide metropolitan regions and areas with the means to assess their greenhouse gas emissions and identify effective mitigation strategies to enable them to reduce these by 80% by 2050, to meet this EU target, and to secure their low carbon energy futures.

METREX
intention is that the 'Benchmark' should be actively used within metropolitan regions and areas to help them to address their spatial planning and development problems and realise their development opportunities in the most effective way. The 'Benchmark' is a tool to aid metropolitan competitiveness and sustainability.

InterMETREX

InterMETREX was led by the Glasgow & Clyde Valley Structure Plan Joint Committee (GCVSPJC) and involved 31 metropolitan partners and METREX, working within a budget of €1.16m, for the development, production and application of a benchmark of effective spatial planning and development practice in EN|DE|FR|ES|IT and an e-Atlas.

The Benchmark publication contains 28 benchmarks of effective practice, covering the full range of metropolitan spatial planning and development issues, and is designed to enable practitioners to self-assess their current practice against a range of indicators and to then take such steps to improvement as their circumstances allow.

InterMETREX also produced an electronic e-Atlas, which, as an aid to future networking, contains profiles of partner metropolitan areas.

METREX intention is that the e-Atlas will be accessible through the METREX web site and be capable of being updated on a regular basis. It will provide insight into the issues being addressed in individual European metropolitan regions and areas and facilitate informed networking and exchange on issues of common interest.

InterMETREXplus involved an extension to the project to enable four partners to pilot the application of the Greenhouse Gas Regional Inventory Project (GRIP) model at the metropolitan level. GRIP was conceived and developed through the Tyndall Centre (UK) for climate change research. The outcome was an addition to the Benchmark to address the issue of climate change.



METREX
intention is that the
'Vision, Framework
and Action Plan'
should be actively
used as a basis for
ongoing cooperation
between
metropolitan areas
to enable them to
become as
collectively
competitive as
possible and to
progressively work
towards the
territorial cohesion
now sought by the
European Union.

PolyMETREXplus

PolyMETREXplus was led by the Generalitat de Catalunya, through the Institut d'Estudis Territorials (IET), and involved 18 metropolitan partners and METREX, working within a budget of €1.84m, in the development and production of a Framework for a polycentric metropolitan Europe.

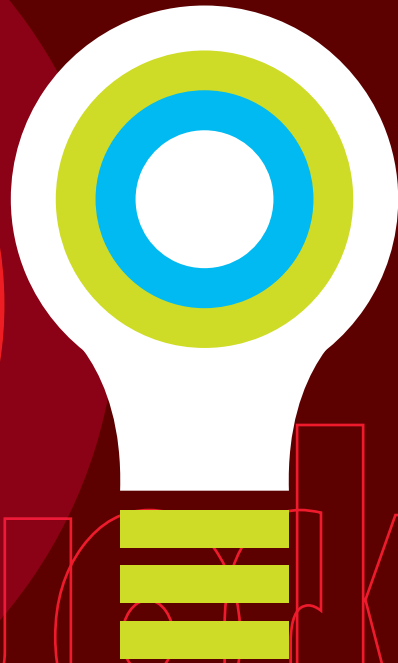
The Framework publication contains a Vision, Framework and Action Plan for a polycentric metropolitan Europe together with summaries of 11 Representative Interregional Networking Activities (RINA). RINA have been developed by the project partners to demonstrate the practicality of a polycentric approach to territorial cohesion across Europe.

METREX intention is also that existing RINA should continue to be progressed, and others initiated, to work towards a polycentric Europe based on clusters and corridors of cooperating metropolitan areas.

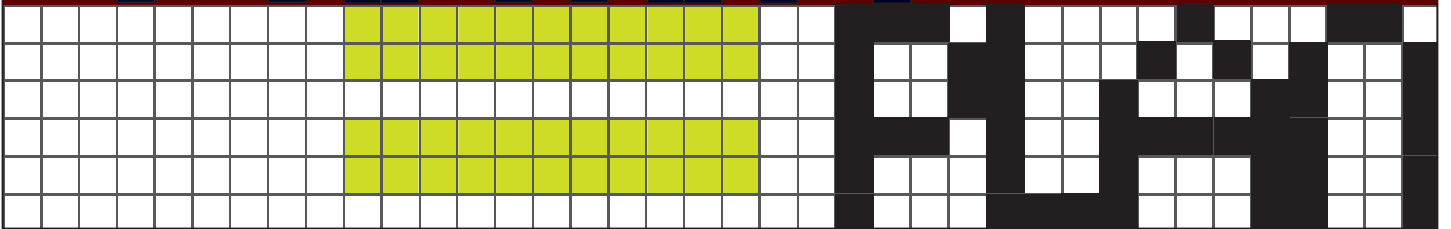
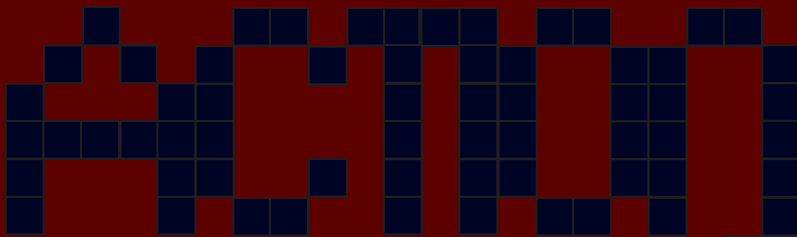
METREX will advocate that European policies, programmes and projects, such as the Trans European Transportation Network, should have regard to the Framework.

METREX will also advocate that, on the principle of subsidiarity, the European Union should initiate an appropriate process for the conception, production and maintenance of a Territorial Framework for Europe to provide a coherent context for national, regional and metropolitan strategic planning.

vision



MANAGEMENT



METREX
regards climate
change and the need
for metropolitan
regions and areas to
adopt effective
strategies for
mitigation and
adaptation as the key
issue for the future.

METREX
intention is that
participation in the
EUCO2 80/50 project,
as observers, should
be taken up by as
many members as
possible, in addition
to the project
partners.

METREX, CLIMATE CHANGE AND LOW CARBON ENERGY FUTURES = A KEY METROPOLITAN ISSUE

METREX has promoted the EUCO2 80/50 project involving 21 metropolitan partners and METREX, working within a budget of €4.3m, in the wider application of the GRIP model and process (piloted through InterMETREXplus). The objective is to produce metropolitan greenhouse gas mitigation strategies to support the EU's target of an 80% reduction in emissions, over 1990 levels, by 2050, and to secure low carbon metropolitan energy futures.

The related USEUCO2 initiative will enable 21 U.S metropolitan areas to participate in the EUCO2 80/50 project as observers. The objective is to enable the GRIP model and process to be developed and used on a transatlantic basis.

The population of the EU is some 490m and of the U.S some 301m. The 100 major metropolitan areas in the EU and the 100 in the U.S comprise about 60% of their respective populations. These 200 EU/U.S metros have a combined population of about 475m within their areas of influence.

EU and U.S GHG emission levels are currently of the order of 11 tonnes per person (tpp) in the EU and 24 tpp in the USA. On this basis the 200 EU/US metros could be responsible for some 7200m tonnes of GHG emissions annually or some 30% of the 23000m tonnes of global GHG emissions.

If action could be initiated to successfully make the 80% reduction required then this would mitigate some 24% of global GHG emissions. This could be the longer-term impact of the USEUCO2 partnership.

METREX will advocate the adoption of the EUCO2 80/50 process to the 200 major transatlantic metropolitan regions and areas through the production of a Metropolitan Mitigation Manual and a related DVD.

METREX

intention is to revisit the work of previous expert groups to meet future member needs and to initiate further groups in response to member requirements.

METREX

intention, as a practitioner network, is to maintain a mutually beneficial collaborative relationship with ESPON, as a research network. Clearly there are benefits in research being applied.

EXPERT GROUPS

METREX members have initiated expert group consideration of nine issues of common interest and their findings and conclusions have been published on the METREX web site.

They include consideration of:

- sustainability and metropolitan planning process
- planning for economic change
- integrated land-use planning and transportation
- planning for major events
- major urban restructuring
- urban re-qualification
- strategic planning for retailing
- Metropolitan Governance
- EU Lisbon Strategy indicators.

Expert groups are currently considering:

- major Infrastructure in metropolitan regions
- large firm headquarters
- intra-metropolitan aspects of polycentricity.

Members can make suggestions for the formation of expert groups through the METREX secretariat. The secretariat then seeks expressions of interest from colleagues. Groups normally work quite quickly to collect relevant knowledge and experience, consider the implications and publish their findings and conclusions. They are led by the initiating member and supported by the secretariat.

ESPON - The European Spatial Planning Observation Network

The European Spatial Planning Observation Network (ESPON) is the research network on spatial planning issues of the European Union. METREX has drawn on past ESPON research during the PolyMETREXplus project and ESPON has contributed, on a regular basis, to METREX meetings and conferences.

ESPON is funded through INTERREG and has a programme to 2013 that includes provision for Targeted Analysis for Stakeholders.

METREX has suggested a number of topics for consideration including:

- metropolitan data
- metropolitan definition
- comparative consumption
- comparative services of public interest
- climate change/Urban change
- European spatial planning process.

It is understood that the first two matters, metropolitan data and metropolitan definition, are being progressed directly within the wider ESPON programme. Climate change is now being progressed through the EUCO2 80/50 project. The European Union, through DG Regio, is progressing a stakeholder dialogue on the issue of territorial cohesion.

METREX intention is to progress consideration of comparative consumption and comparative services of public interest through the ESPON Targeted Analysis for Stakeholders.

METREX members are also invited to consider the opportunities for targeted analysis offered by ESPON (see www.espon.lu) and to initiate these through the secretariat.

METREX
intention is to
continue to develop
an international
dimension to
METREX affairs
where this would be
relevant to
members' interests.
Study visits are now
being investigated
for Santiago, Chile,
in 2009,
St Petersburg
in 2010
and Istanbul
in 2011.

INTERNATIONAL DIMENSION

In 2006 METREX was invited by colleagues from the Institute for the General Plan of Moscow to arrange a joint international seminar in Moscow to explore experience of planning for sustainable development. The METREX delegation comprised 26 colleagues, from 12 metropolitan regions and areas, led by the Provincia di Torino. A full report of the proceedings can be downloaded from the METREX web site. An outcome was a Protocol of Intent setting out the basis for future relationships between the Institute and METREX and a specific Programme of Cooperation. The Institute for the General Plan of Moscow is now a member of METREX.

In 2007 METREX took advantage of relationships that already existed between the twinned port cities of Rotterdam and Shanghai to arrange an international study visit on the theme of Globalisation, Urban Development and Sustainability. The METREX delegation comprised 19 colleagues, from eight metropolitan regions and areas, led by the President of METREX, Dr. Bernd Steinacher. A full feedback report can be downloaded from the METREX web site. An outcome was agreement to build on the relationships that were established with the Shanghai Urban Planning Administration Bureau and to arrange further exchanges of knowledge and information.

EUROPEAN NEIGHBOURHOOD POLICY

The European Neighbourhood Policy facilitates the development of relationships with neighbouring EU countries. The policy is administered by DG RELEX (External Relations).

METREX intention is to explore the possibility of exchanges with neighbouring metropolitan areas to consider the key issues that they are facing and how they are responding to them. Areas that are of interest include Moscow, St. Petersburg, Minsk, Kiev, Lviv, Belgrade, Chisinau, Odessa, Istanbul, Alexandria and Rabat.

METREX intention is to continue to develop its electronic communications potential, through the Internet and its web site, teleconferencing and videoconferencing (particularly for project and expert group working).

The METREX e-mail database, with all member and associated contacts, is available on a restricted basis (ie. having regard to data protection legislation) from the METREX secretariat.

COMMUNICATIONS

Through the Internet and via the METREX web site at www.eurometrex.org. METREX communications are now almost entirely electronic. These opportunities have developed rapidly over the last decade and now offer a fast and low cost means of communication and dissemination of knowledge and information. Networking has become much easier, less costly and more efficient.

The METREX web site now holds the records of the Network's activities, is the source from which to download documents and provides the database for networking communications.



www.eurometrex.org



**email database
videoconferencing
teleconferencing**



KEY REFERENCES

- Glasgow Metropolitan Regions Conference Founding Declaration
- Proceedings - Meetings, Conferences, Projects and Expert Groups
1996 - present
- Porto Declaration and the Metropolitan Magna Carta
- Szczecin Declaration
- Washington DC Declaration
- Porto Practice Benchmark
- InterMETREX Benchmark of effective metropolitan spatial planning
and development practice
- PolyMETREXplus Framework for a polycentric metropolitan Europe
- Impressions - METREX - The first 10 years 1996 - 2006
- Intentions - METREX - 2007 onwards

PRESIDENCY

SECRETARIAT/ INTERPRETARIAT - CONTACTS

PRESIDENTS

1996 - 2000 DR. GERALD MCGRATH

Chair of the International Committee of
Strathclyde Regional Council

2000 - 2004 PROF.SSA MERCEDES BRESSO

Presidente of the Provincia di Torino

2004 - PRESENT DR. BERND STEINACHER

Regionaldirektor
Verband Region Stuttgart

HONORARY PRESIDENT

DR. GERALD MCGRATH

HONORARY VICE PRESIDENT

PROFESSOR KLITO GERARDI

Technical University of Athens

VICE PRESIDENTS

All current political Members of
METREX are Vice Presidents

METREX AMBASSADORS

EU neighbours Asia and the Americas

KLITO GERARDI

Former President of the
Organisation of Athens and
Professor at the Technical University of Athens

FRED DE RUITER

Former Director of Planning and Housing
City of Rotterdam and
Managing Director of Rotterdam Stadshaven

DR. ALBERT SERATOSSA

Advisor on spatial planning and development
to the Generalitat de Catalunya

JUSSI VUORINEN

Former Head of Master Plan
City of Helsinki

METREX SECRETARIAT AND INTERPRETARIAT

METREX

125 West Regent Street
GLASGOW G2 2SA
Scotland UK
T. +44 (0) 1292 317074
F. +44 (0) 1292 317074
enquiries@eurometrex.org
www.eurometrex.org

SECRETARY GENERAL

Roger Read

HEAD OF PROJECTS

Jim Parke

HEAD OF EUROPEAN RELATIONS

Vincent Goodstadt

ACCOUNTANT

Jackie Brown

BANKERS

Adam and Company
Glasgow

HEAD OF COMMUNICATIONS AND WEBMASTER

Tim Page

GRAPHIC DESIGN

Janis Clarke Stone Circle Design

GERMAN LIAISON AND LANGUAGE SERVICES

Stefanie Becker

FRENCH LIAISON AND LANGUAGE SERVICES

Marc Fermin

SPANISH LIAISON AND LANGUAGE SERVICES

Alicia Harland

ITALIAN LIAISON AND LANGUAGE SERVICES

Adriano Muratori

METREX
intention is to
continue to grow the
Network and, in
consequence, its
overall subscription
income to add to the
benefits available to
members.

This means the
increasing value of
membership at a
reducing cost (in real
terms) of a stable
membership fee.

FINANCE

METREX was established with three years start-up funding from the former Strathclyde Regional Council, Scotland. At the end of this period the Network had become largely self-supporting from member subscriptions. The METREX annual subscription income is now approximately €250k.

Annual subscriptions are €7k for a single authority membership and €9k for a multiple (ie. region, province, community etc.) membership. There are 50% reductions for Members from the former Central and Eastern European Countries (CEEC) and 30% reductions for the Baltic States and Poland.

The INTERREG project co-funding rate for staff, travel and other project costs, is currently 75%. This means that METREX costs for the EUCO2 80/50 project will be largely reimbursed, leaving current budgetary provision for projects to be spent on other activities.

METREX has no substantial overheads. Its registered office in Brussels is hosted by Scotland Europa and its operational office in Glasgow is hosted by the Glasgow & Clyde Valley Strategic Development Planning Authority (GCVSDPA). These arrangements allow most available income to be allocated to support the METREX activities and initiatives sought by members.

The METREX budget is supplemented by the in kind support of members hosting meetings and conferences. Hosts normally fund venue, language services (including 50% of interpretation costs), documentation, local study travel and hospitality costs.

METREX has not increased its subscription rates since its inception. It has relied on the growing membership to provide a growing subscription income. METREX is a very low cost high added value Network in comparison with other European associations. It achieves this by using a small team of experienced and skilled secretariat/interpretariat staff who are capable of acting quickly and effectively.

METREX has almost achieved its objective to become fully representative of all countries of wider Europe (ie. EU 27+ Norway, Switzerland and Russia). Representation is still sought from eight countries, including, from north to south, Norway, Estonia, Ireland, Luxembourg, Austria, Slovakia, Slovenia and Croatia. The Network is also under represented in the UK and France.

METREX
would welcome, in
particular,
membership from
Oslo, Tallinn,
Warszawa (Mazovia),
Bratislava, Ljubljana,
Zagreb, Dublin,
Luxembourg and
Vienna and from
metropolitan areas
in France and the
UK.

MEMBERSHIP

European metropolitan regions and areas can join the Network through the following straightforward procedure:

- download, complete and return to the secretariat the Membership Application Form from the METREX web site (www.eurometrex.org)
- download, sign and return to the secretariat a copy of the METREX Statutes
- pay, by bank transfer, the appropriate membership fee (details are provided on the Application Form)
- membership confirmed by the Secretary General and endorsed at the next available Managing Committee meeting or General Assembly
- receive a Membership Certificate from the President at the next available Managing Committee meeting or General Assembly.

The background is a vibrant yellow with several large, overlapping, curved shapes in shades of light green and lime green. The shapes are smooth and organic, creating a sense of movement and depth. The text is centered horizontally and partially overlaid by these shapes.

WE INVITE YOU TO JOIN US

LIST OF MEMBERS

METROPOLITAN AREA	MEMBER
1 Amsterdam	1 Stad Amsterdam
2 Athens	2 Organisation of Athens
3 Barcelona	3 Prefecture of Catalunya
4 Berlin	4 Hauptstadtregion Berlin-Brandenburg
5 Bilbao	5 Gobierno del Pais-Vasco
	6 Bologna
	6 Regione Emilia-Romagna
	7 Provincia di Bologna
7 Bruxelles	8 Ville de Bruxelles
8 Bucharest	9 Municipality of Bucarest (UMPCB)
9 Budapest	10 Central Hungarian Development Agency
10 Copenhagen/Malmö	11 Øresundkomiteen
11 Eurociudad Vasca	12 Eurociudad Vasca/Bayonne/St Sebastian
12 Frankfurt	13 Planungsverband Frankfurt
13 Genova	14 Provincia di Genova
14 Glasgow	15 Glasgow & Clyde Valley Strategic Development Planning Authority Scottish Enterprise
15 Granada	16 Ayuntamiento de Granada
16 Hamburg	17 Metropolregion Hamburg
17 Hannover	18 Metropolregion Hannover Braunschweig Göttingen
18 Helsinki	19 Helsinki City Council
	20 YTV Helsinki Metropolitan Area
	21 Uusimaa Regional Council
19 Istanbul*	22 Municipality of Istanbul
20 Krakow	23 Municipality of Krakow
21 Lisboa	24 Area Metropolitana de Lisboa
22 London	25 Greater London Authority
23 Madrid	26 Comunidad de Madrid
24 Marseille*	27 Chamber of Commerce and Industry Marseille - Provence
25 Milano	28 Regione Lombardia
26 Moscow	29 Institute for the General Plan of Moscow
	30 Global Cities United
27 München	31 Regionaler Planungsverband München

METROPOLITAN AREA	MEMBER
28 Napoli	32 Provincia di Napoli
29 Nürnberg	33 Metropolregion Nürnberg
	34 Regionaler Planungsverband Westmittelfranken
	35 Regionaler Planungsverband Industrieregion Mittelfranken
30 Oradea	36 Oradea Metropolitan Area Association
31 Paris	37 IAU (RIF)
32 Porto	38 Area Metropolitana do Porto
33 Prague	39 City of Prague
34 Rhein-Neckar	40 Verband Region Rhein-Neckar
35 Riga	41 City of Riga Council
36 Roma	42 Provincia di Roma
37 Rotterdam	43 Rotterdam City Council
38 Sachsendreieck	44 City of Leipzig
39 Sevilla	45 Junta de Andalucia
	46 Ayuntamiento de Sevilla
40 Sofia	47 Municipality of Sofia
41 South Coast Metropole	48 Cities of Portsmouth and Southampton Boroughs of Poole and Bournemouth
42 Stockholm	49 Stockholm County Council
	50 Stockholm City Council
43 Stuttgart	51 Verband Region Stuttgart
44 Szczecin	52 Municipality of Szczecin
45 Thessaloniki	53 Organisation of Thessaloniki
46 Torino	54 Regione Piemonte
	55 Provincia di Torino
47 Veneto	56 Regione del Veneto
48 Wroclaw	57 Municipality of Wroclaw
49 Zaragoza	58 Diputación Provincial de Zaragoza
	59 Ayuntamiento de Zaragoza
50 Zurich	60 RZU

• In the process of joining

METREX AGENDA SUMMARISED

Meetings, conferences and study visits

2006	2007	2008
<p>METREX Impressions. 10 years of METREX 1996 - 2006.</p> <p>Moscow International Seminar. Ongoing commitment to fulfil the obligations of the Protocol of Agreement and the Programme of Cooperation.</p>	<p>METREX@50. Introducing an international dimension to METREX affairs.</p> <p>Veneto (Vicenza) spring meeting. Initiated EU neighbour contact with Istanbul and Alexandria.</p> <p>Zaragoza autumn meeting. Theme - Water and Expo 2008.</p> <p>Shanghai study visit. Ongoing cooperation and exchange (see also METREX, climate change and low carbon energy futures).</p> <p>Hamburg conference. Theme - Climate change.</p> <p>Washington DC (USA) Conference. Theme - Climate change Declaration and USEUCO2 project.</p>	<p>Amsterdam spring meeting. Theme - Innovative Regional Strategies.</p> <p>London autumn conference. Theme - Climate change/Urban change.</p> <p>Launch of the EUCO2 80/50 and USEUCO2 projects.</p>

2009

Paris spring meeting.
Consideration of the EU Green
Book on Territorial Cohesion.
Wroclaw autumn meeting.
Santiago (Chile) study visit.

2010

**Baltic spring meeting (Riga and
Vilnius).**
Hamburg autumn conference.
Conclusion of the EUCO2 80/50
project.
St. Petersburg study visit.
(Through Helsinki).
Excursion to Tallinn .

2011

Athens spring meeting.
Theme - EU neighbours.
Istanbul study visit.

METREX AGENDA SUMMARISED

METREX Projects

InterMETREXplus
(INTERREG IIIC - Lead Partner
Glasgow & Clyde Valley Strategic
Development Planning Authority).

Progressing the use of the
Benchmark of effective
metropolitan spatial planning
practice.

Possible further consideration of
the issue of integrated
metropolitan strategies in relation
to the EUCO2 80/50 project.

PolyMETREXplus
(INTERREG IIIC - Lead Partner
Generalitat de Catalunya).

Progressing the 11 Representative
Interregional Networking Activities
(RINA) in the **Framework** report
(Polycentricity and better
European territorial balance).

EUCO2 80/50
(Lead Partner
Free and Hanseatic City of
Hamburg).

Progressing the project when
approved (September 2008) to its
conclusion (December 2010).

Progressing US participation in the
USEUCO2 project.

Wider international dissemination
of the project outcome (eg. to
China).

Climate change/urban change
Mitigation Manual and related
DVD of effective metropolitan
mitigation practice.

METREX Expert Groups

Major infrastructure
(Group Leader Verband
Region Stuttgart).

Berlin workshop.

Economic affairs
(Group Leader IAURIF).

Lisbon Indicators Report to be
completed by partners.

Large Firm Headquarters
(Group Leader IAURIF).

Paris workshop on Metropolitan
polycentric restructuring
(decentralisation and its
socio/economic and infrastructure
implications).

**Intra-metropolitan aspects of
polycentricity**
(Group Leader Stockholm).

METREX AGENDA SUMMARISED

EU and International Affairs

ESPON

Participation in the ESPON 2007 - 2013 research Programme.

Targeted Analysis for Stakeholders project on Consumption Comparisons.

EU Neighbourhood Policy

See prospective METREX Athens Meeting to involve, from north to south, Minsk, Kiev, Chisinau, Odessa, Tunis and Rabat.

EU Territorial Agenda

Advocacy of a metropolitan dimension to European affairs.

Advocacy of a European Territorial Vision and Strategy with an ongoing process of stakeholder (including METREX) involvement.

International Affairs

Study Visits to Santiago (Chile), St.Petersburg and Istanbul.



METREX INTENTIONS 2007 ONWARDS